

ANCHORAGE, ALASKA

RNAV (GPS) RWY 6

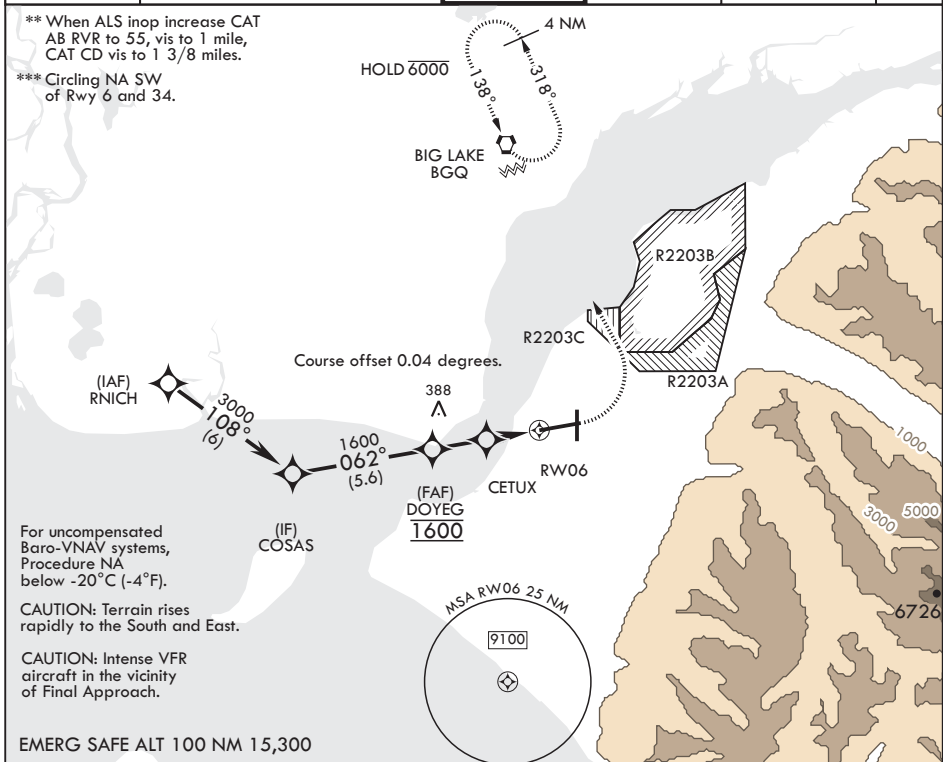
APCH CRS	Rwy Idg	10,000
062°	TDZE	175
	Arprt Elev	213

(- (USAF))

ELMENDORF AFB (PAED)

RNP APCH	ALSF-1	MISSED APPROACH: Climb to 800 then climbing left turn to 3000 direct BGQ and hold.
GPS required.		
* When ALS inop increase RVR to 60, vis to 1 1/8 miles.		

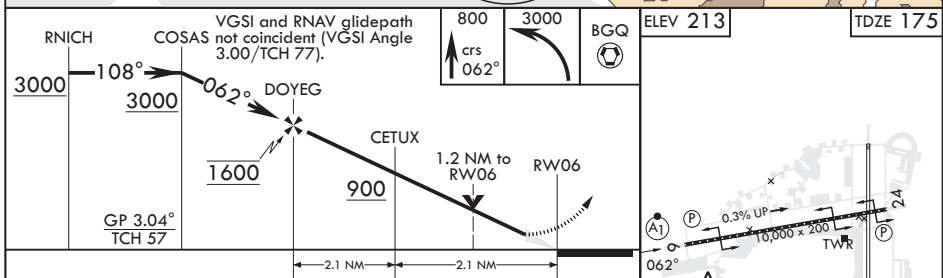
ATIS*	ANCHORAGE APP CON/DEP CON	TOWER	GND CON	CLNC DEL	PAR
124.3 273.5	118.6 290.5	127.2 352.05	121.8 275.8	128.8 306.925	



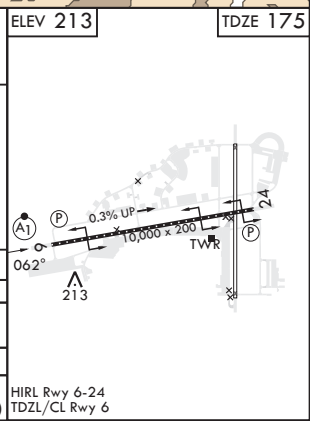
** When ALS inop increase CAT AB RVR to 55, vis to 1 mile, CAT CD vis to 1 3/8 miles.
 *** Circling NA SW of Rwy 6 and 34.

For uncompensated Baro-VNAV systems, Procedure NA below -20°C (-4°F).
 CAUTION: Terrain rises rapidly to the South and East.
 CAUTION: Intense VFR aircraft in the vicinity of Final Approach.

EMERG SAFE ALT 100 NM 15,300



CATEGORY	A	B	C	D
LNAV/VNAV DA*	561/35	386	(400-¾)	576/40 401 (400-¾)
LNAV MDA**	640/24 465 (500-½)		640/50 465 (500-1)	
CIRCLING***	840-1 627 (700-1)		920-2 707 (800-2)	1020-2½ 807 (900-2½)



ANCHORAGE, ALASKA
 Amdt 5 25JAN24

61°15'N - 149°48'W

ELMENDORF AFB (PAED)

RNAV (GPS) RWY 6

AK, 26 DEC 2024 to 20 FEB 2025

AK, 26 DEC 2024 to 20 FEB 2025