

(ORT1.ORT) 24193

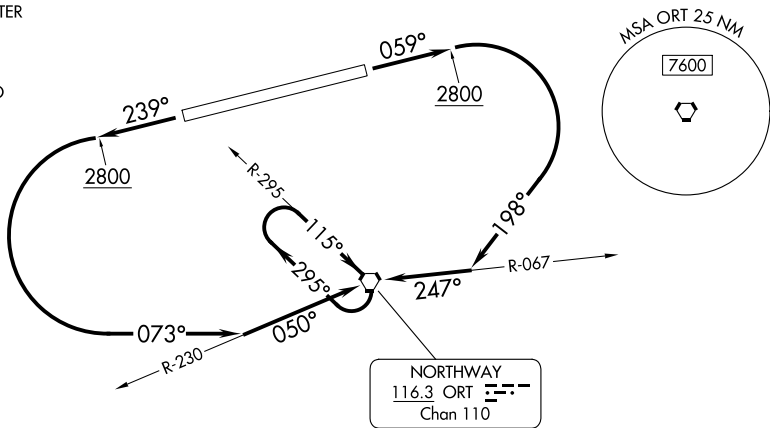
AL-1216 (FAA)

NORTHWAY (ORT)(PAOR)

# NORTHWAY ONE DEPARTURE (OBSTACLE)

NORTHWAY, ALASKA

ANCHORAGE CENTER  
126.55 323.0  
ASOS  
135.4  
NORTHWAY RADIO  
123.6



### TAKEOFF MINIMUMS

Rwy 24: Standard.

Rwy 6: Standard with a minimum climb of 227' per NM to 3600, or 2800-3 for climb in visual conditions.

### TAKEOFF OBSTACLE NOTES

- Rwy 6: Light poles 0' from DER, 70' left of centerline, 1720' MSL. Light poles 5' from DER, 107' right of centerline, 1720' MSL. Light poles 5' from DER, 104' left of centerline, 1721' MSL. Tree 22' from DER, 255' right of centerline, 1722' MSL. Trees beginning 29' from DER, 263' right of centerline, up to 1723' MSL. Trees beginning 56' from DER, 367' left of centerline, up to 1725' MSL. Tree 81' from DER, 481' right of centerline, 1728' MSL. Trees beginning 115' from DER, 298' right of centerline, up to 1731' MSL. Trees beginning 149' from DER, 367' left of centerline, up to 1726' MSL. Tree 212' from DER, 480' right of centerline, 1748' MSL. Tree 235' from DER, 431' left of centerline, 1727' MSL. Tree 276' from DER, 468' left of centerline, 1728' MSL. Trees beginning 663' from DER, 615' right of centerline, up to 1752' MSL. Trees beginning 1070' from DER, 399' right of centerline, up to 1765' MSL. Trees beginning 1168' from DER, 595' right of centerline, up to 1778' MSL. Tree 1229' from DER, 824' right of centerline, 1780' MSL. Tree, pole, catenary wires beginning 1242' from DER, 503' right of centerline, up to 1790' MSL. Tree 1701' from DER, 900' left of centerline, 1763' MSL. Tree 1708' from DER, 726' left of centerline, 1768' MSL. Trees beginning 1744' from DER, 891' left of centerline, up to 1773' MSL.
- Rwy 24: Light poles, vegetation beginning 0' from DER, 70' right of centerline, up to 1724' MSL. Tree 35' from DER, 427' left of centerline, 1722' MSL. Trees beginning 119' from DER, 333' left of centerline, up to 1730' MSL. Tree 167' from DER, 267' right of centerline, 1731' MSL. Tree 1150' from DER, 674' left of centerline, 1757' MSL. Trees beginning 1190' from DER, 649' left of centerline, up to 1769' MSL. Tree 1223' from DER, 675' left of centerline, 1781' MSL. Trees beginning 1244' from DER, 16' left of centerline, up to 1792' MSL. Trees beginning 1772' from DER, 82' right of centerline, up to 1784' MSL. Tree 2028' from DER, 387' right of centerline, 1787' MSL. Tree 2051' from DER, 455' right of centerline, 1795' MSL. Trees beginning 2079' from DER, 178' right of centerline, up to 1799' MSL. Trees beginning 2270' from DER, 646' right of centerline, up to 1801' MSL. Trees beginning 2295' from DER, 113' right of centerline, up to 1802' MSL.

NOTE: Chart not to scale.

### DEPARTURE ROUTE DESCRIPTION

TAKEOFF RUNWAY 6: Climb on heading 059° to 2800, then climbing right turn heading 198° to intercept ORT VORTAC R-067 to ORT and hold, thence . . .

TAKEOFF RUNWAY 24: Climb on heading 239° to 2800, then climbing left turn heading 073° to intercept ORT VORTAC R-230 to ORT and hold, thence . . .

. . . continue climb in ORT holding pattern to cross ORT at or above MEA for route of flight.

VCOA RUNWAY 6: Obtain ATC approval for VCOA when requesting IFR clearance.

Climb in visual conditions to cross Northway Airport at or above 4400 before proceeding on course.

# NORTHWAY ONE DEPARTURE (OBSTACLE)

NORTHWAY, ALASKA

NORTHWAY (ORT)(PAOR)

(ORT1.ORT) 11JUL24

AK, 26 DEC 2024 to 20 FEB 2025

AK, 26 DEC 2024 to 20 FEB 2025