

NDB DJN <b>347</b>	APCH CRS <b>186°</b>	Rwy ldg TDZE Arpt Elev	<b>N/A</b> <b>N/A</b> <b>1285</b>
-----------------------	-------------------------	---------------------------	---

[USA]

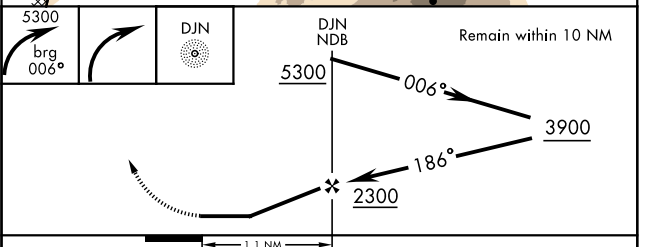
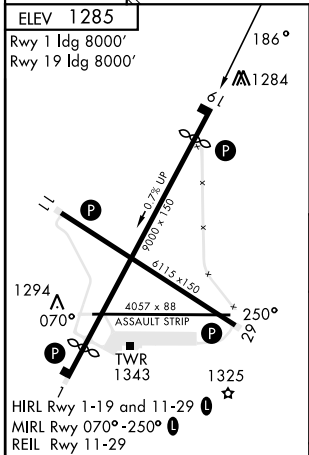
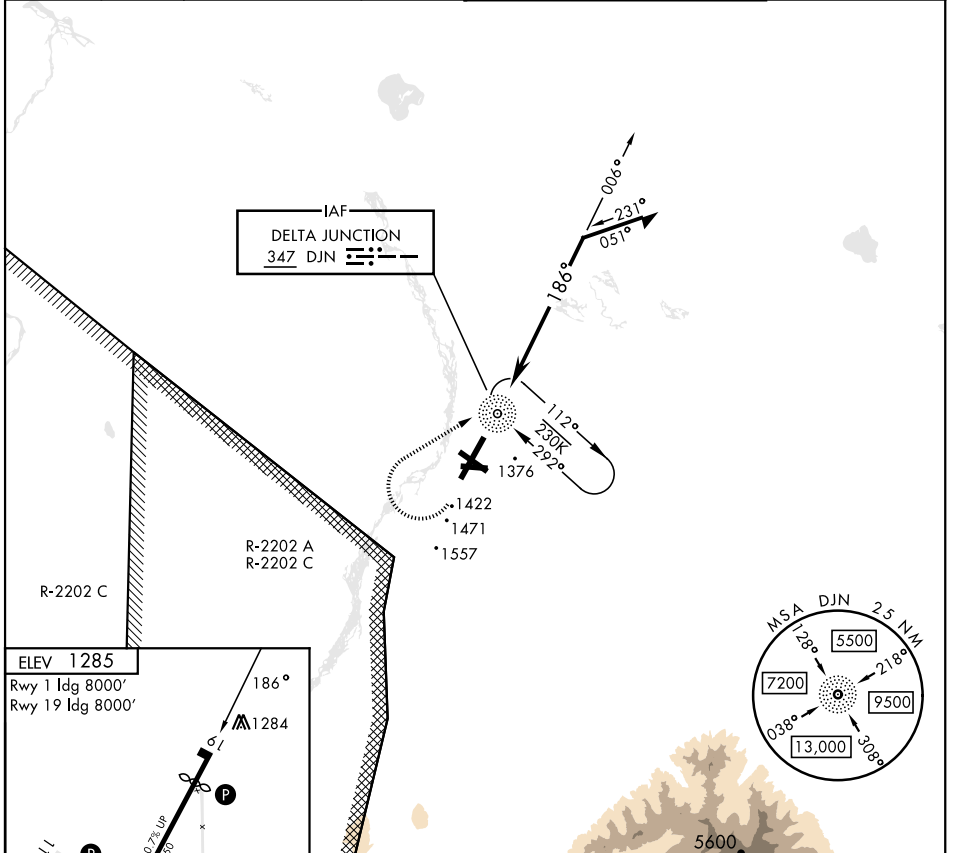
ALLEN AAF (PABI)

RNAV or RADAR required.

MISSED APPROACH: Climbing right turn to 5300 via 006° bearing from DJN NDB, then right turn direct DJN NDB and hold.

▼ \* Circling not authorized East of Rwy 1-19.

ATIS <b>132.075</b>	ASOS <b>135.65</b>	ANCHORAGE CENTER <b>135.3 322.5</b>	CTAF <b>122.9</b>	TOWER ★ <b>119.8 235.775 40.8 (E) FM</b>	GND CON <b>118.225 251.05</b>
------------------------	-----------------------	--	----------------------	---	----------------------------------



FAF to MAP 1.1 NM					CATEGORY	A	B	C	D
Knots	60	90	120	150	180	1880-1	595 (600-1)	1880-1½ 595 (600-1½)	2040-2½ 755 (800-2½)
Min:Sec	1:06	0:44	0:33	0:26	0:22	<input checked="" type="checkbox"/> CIRCLING*			

AK, 26 DEC 2024 to 20 FEB 2025

AK, 26 DEC 2024 to 20 FEB 2025