

DELTA JUNCTION/FORT GREELY, ALASKA

RNAV (GPS) RWY 19

APCH CRS	Rwy Idg	8000
187°	TDZE	1239
	Arprt Elev	1285

[USA]

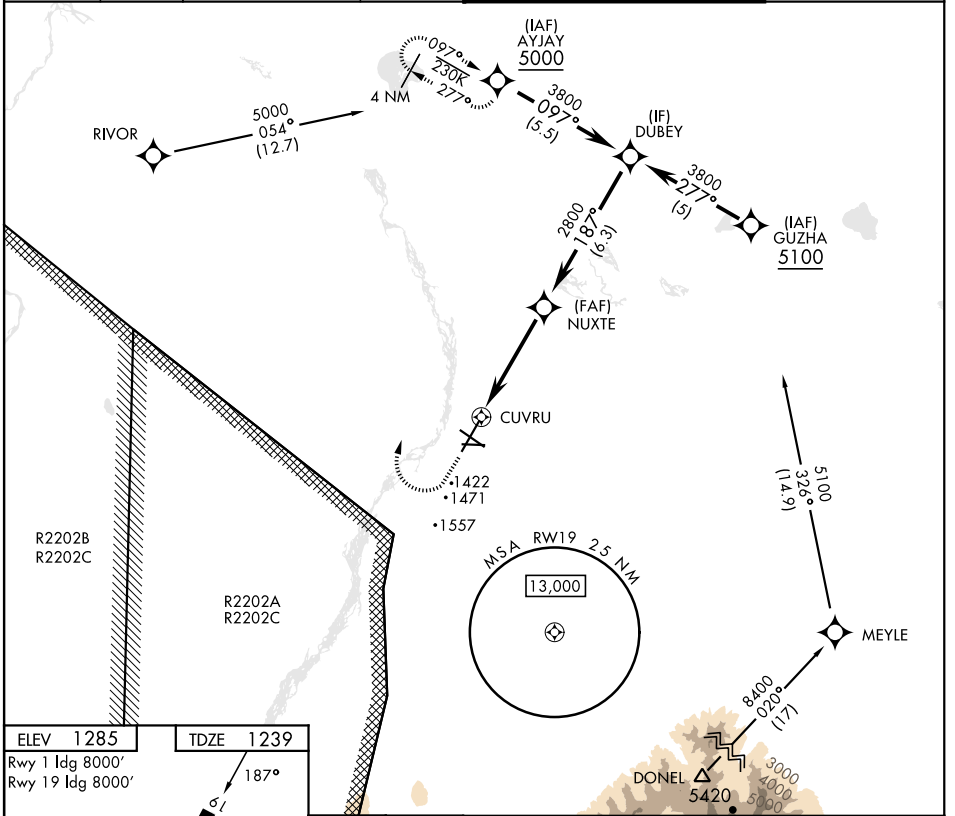
ALLEN AAF (PABI)

RNP APCH - GPS

* Circling not authorized East of Rwy 1-19.

MISSED APPROACH: Climbing right turn to 5000, direct AYJAY and hold.

ATIS	ASOS	ANCHORAGE CENTER	CTAF	ALLEN TOWER *	GND CON
132.075	135.65	135.3 322.5	122.9	119.8 235.775 40.8 (E) FM	118.225 251.05



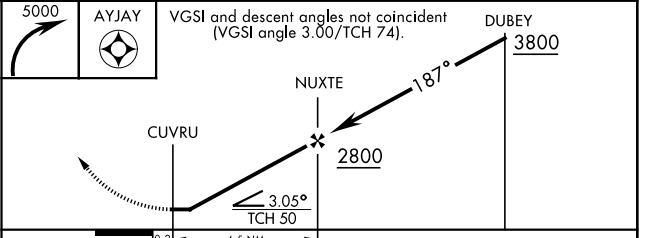
AK, 26 DEC 2024 to 20 FEB 2025

AK, 26 DEC 2024 to 20 FEB 2025

ELEV 1285	TDZE 1239
Rwy 1 Idg 8000'	
Rwy 19 Idg 8000'	

Detailed approach diagram for RWY 19. It shows the 187° approach path starting at 5000 ft, passing through waypoints AYJAY, DUBEY, NUXTE, and CUVRU. Key altitudes include 5000 ft at AYJAY, 3800 ft at DUBEY, 2800 ft at NUXTE, and 1422/1471 ft at CUVRU. Distances are marked: 4.5 NM between AYJAY and DUBEY, 5.3 NM between DUBEY and NUXTE, and 1.9 NM between NUXTE and CUVRU. Obstacles are shown near DONEL (5420) and MEYLE (5100). A 3.05° TCH 50 is indicated for the final approach segment.

HIRL Rwy 1-19 and 11-29
MIRL Rwy 070°-250°
REIL Rwy 11-29



CATEGORY	A	B	C	D
LNAV MDA	1740-1 501 (500-1)	1740-1½ 501 (500-1½)		
C CIRCLING*	1740-1 455 (500-1)	1780-1 495 (500-1)	1860-1½ 575 (600-1½)	2040-2½ 755 (800-2½)

DELTA JUNCTION/FORT GREELY, ALASKA

64°00'N-145°43'W

ALLEN AAF (PABI)

Amdt 1 10AUG23

RNAV (GPS) RWY 19