

VOR/DME GKN <b>115.6</b> Chan <b>103</b>	APP CRS <b>148°</b>	Rwy ldg <b>5001</b> TDZE <b>1586</b> Apt Elev <b>1586</b>
--	------------------------	---

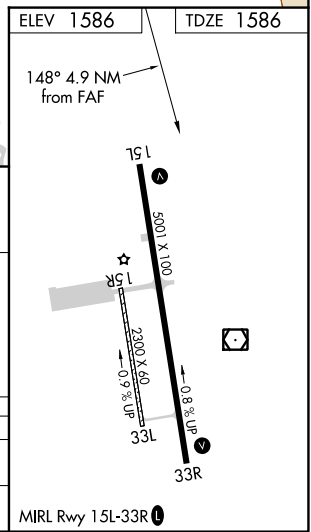
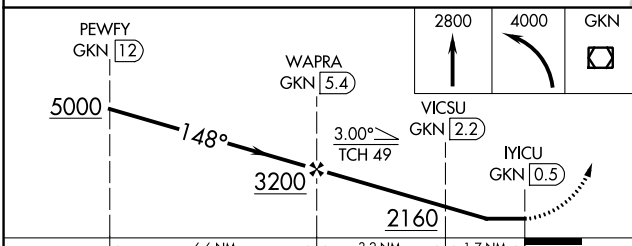
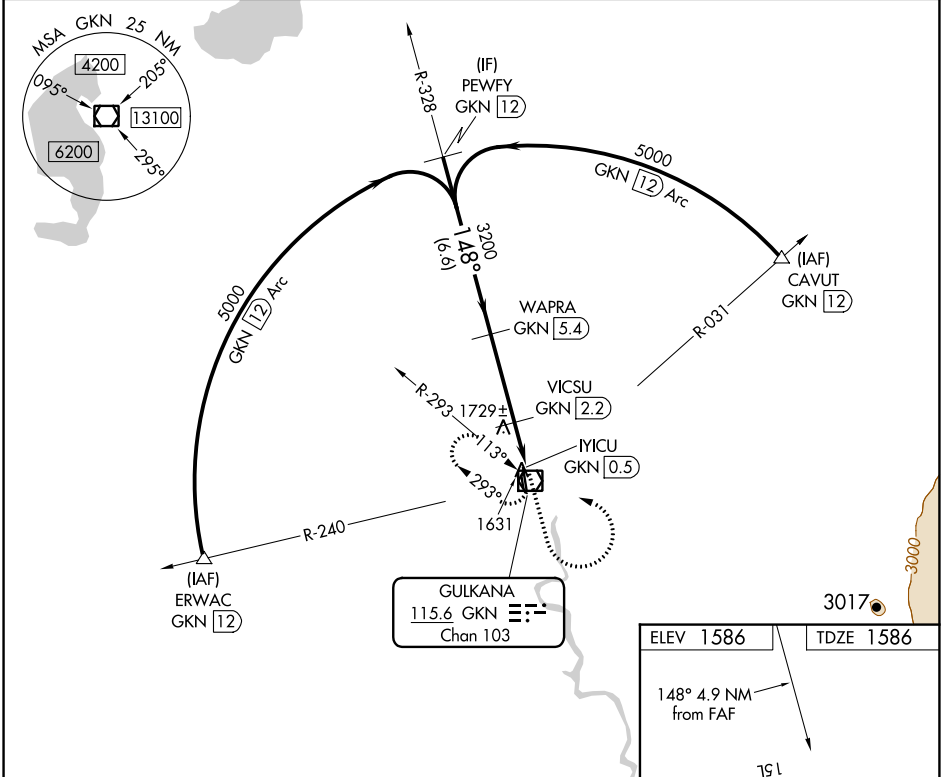
# VOR RWY 15L

GULKANA (GKN) (PAGK)

DME required.  
 ⚠ Circling Rwy 15R, 33L NA at night. Rwy 15L helicopter visibility reduction below 3/4 SM NA. When local altimeter setting not received, procedure NA.

MISSED APPROACH: Climb to 2800 then climbing left turn to 4000 direct GKN VOR/DME and hold, continue climb-in-hold to 4000.

ASOS <b>134.85</b>	ANCHORAGE CENTER <b>119.5 317.5</b>	CTAF <b>122.9 0</b>
-----------------------	--	------------------------



CATEGORY	A	B	C	D
S-15L	2040-1	454 (500-1)	2040-1 3/8	454 (500-1 3/8)
<b>C</b> CIRCLING	2040-1 454 (500-1)	2080-1 494 (500-1)	2080-1 1/2 494 (500-1 1/2)	2200-2 614 (700-2)

AK, 26 DEC 2024 to 20 FEB 2025

AK, 26 DEC 2024 to 20 FEB 2025