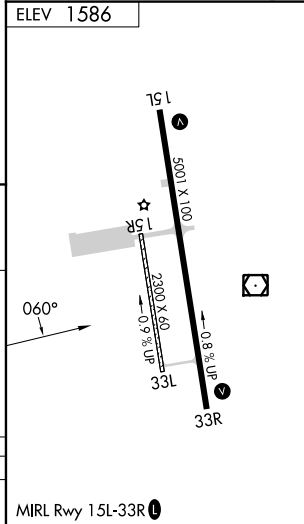
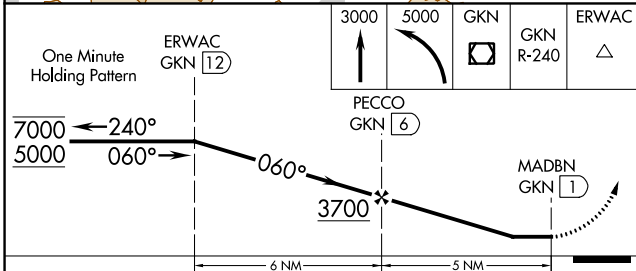
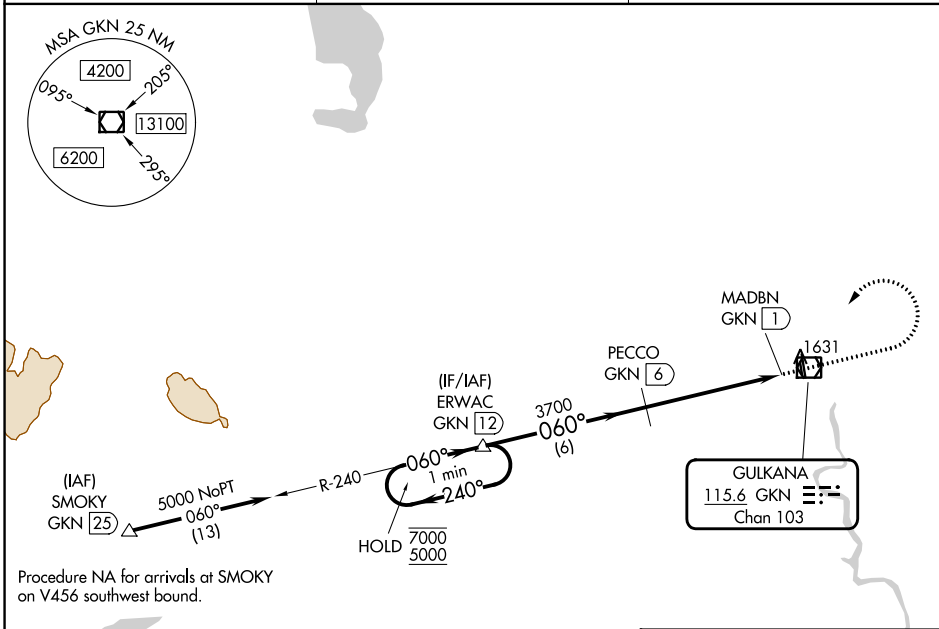


VOR/DME GKN <b>115.6</b> Chan <b>103</b>	APP CRS <b>060°</b>	Rwy Idg TDZE Apt Elev <b>1586</b>	<b>N/A</b> <b>N/A</b> <b>1586</b>
--	------------------------	---	---

**VOR-A**  
GULKANA (GKN) (PAGK)

DME required.	MISSED APPROACH: Climb to 3000 then climbing left turn to 5000 direct GKN VOR/DME and continue on GKN R-240 to ERWAC/GKN 12 DME and hold.
<p>⚠ Circling to Rwy 15R, Rwy 33L NA at night. Rwy 15R, 33L helicopter visibility reduction below 1 SM NA.</p>	

ASOS <b>134.85</b>	ANCHORAGE CENTER <b>119.5 317.5</b>	CTAF <b>122.9 0</b>
-----------------------	--	------------------------



CATEGORY	A	B	C	D
Ⓢ CIRCLING	2060-1 474 (500-1)	2080-1 494 (500-1)	2080-1½ 494 (500-1½)	2200-2 614 (700-2)

AK, 26 DEC 2024 to 20 FEB 2025

AK, 26 DEC 2024 to 20 FEB 2025