

APP CRS	Rwy Idg	3500
171°	TDZE	365
	Apt Elev	365

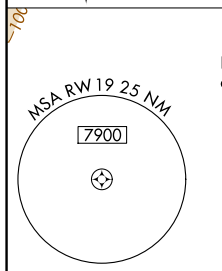
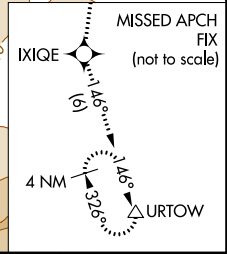
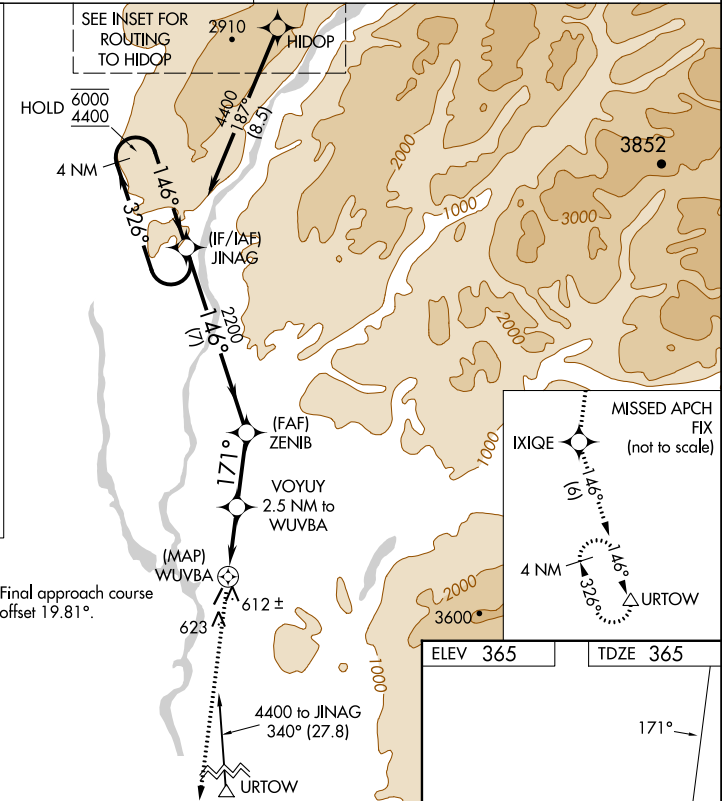
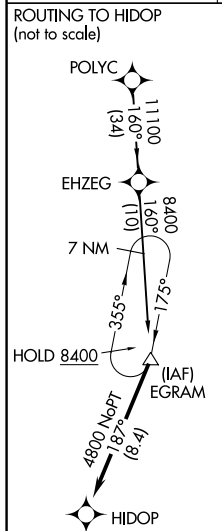
RNAV (GPS) RWY 19

TALKEETNA(TKA)(PATK)

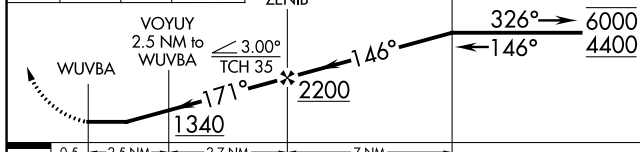
RNP APCH.
 ⚠ Circling NA east of Rwy 1-19. Rwy 19 helicopter visibility reduction below 1 SM NA. Straight-in Rwy 19 NA at night, ⚠ -29°C
 ⚠ Circling Rwy 19 NA at night.

MISSED APPROACH: Climb to 3000 direct IXIQE and on track 146° to URTOW and hold.

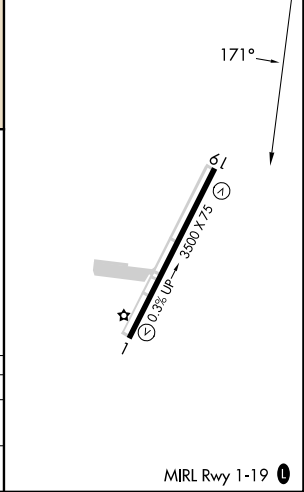
AFIS 135.2	ANCHORAGE CENTER 125.55 254.3	TALKEETNA RADIO 123.6 (CTAF) 0	UNICOM 123.0
----------------------	---	--	------------------------



3000	IXIQE	URTOW	VGSI and descent angles not coincident (VGSI Angle 3.00/TCH 23).
↑	tr 146°	△	



ELEV 365	TDZE 365
----------	----------



CATEGORY	A	B	C	D
LNAV MDA	880-1	515 (600-1)	880-1 $\frac{3}{8}$	515 (600-1 $\frac{3}{8}$)
CIRCLING	880-1	515 (600-1)	1040-2 675 (700-2)	1200-2 $\frac{3}{4}$ 835 (900-2 $\frac{3}{4}$)

MIRL Rwy 1-19 0

AK, 26 DEC 2024 to 20 FEB 2025

AK, 26 DEC 2024 to 20 FEB 2025