

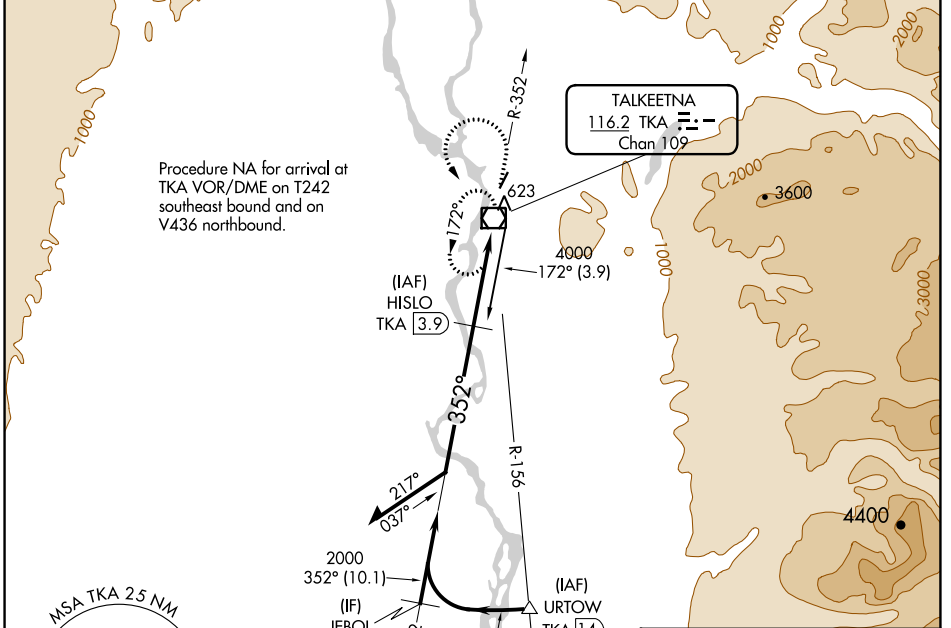
VOR/DME TKA 116.2 Chan 109	APP CRS 352°	Rwy Idg 3500 TDZE 363 Apt Elev 365
------------------------------------------------	------------------------	---------------------------------------------------------------

VOR RWY 1

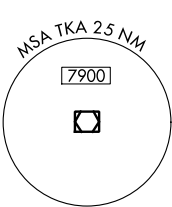
TALKEETNA (TKA)(PATK)

DME required.		MISSED APPROACH: Climb to 2100 on TKA VOR/DME R-352 then climbing left turn to 3200 direct TKA VOR/DME and hold.	
<p>▼ Circling NA east of Rwy 1-19.</p> <p>⚠ Rwy 1 helicopter visibility reduction below 1 SM NA.</p> <p>❄ -29°C Straight-in Rwy 1 NA at night, Circling Rwy 1 NA at night.</p>			

AFIS 135.2	ANCHORAGE CENTER 125.55 254.3	TALKEETNA RADIO 123.6 (CTAF) 0	UNICOM 123.0
----------------------	-----------------------------------------	------------------------------------------	------------------------

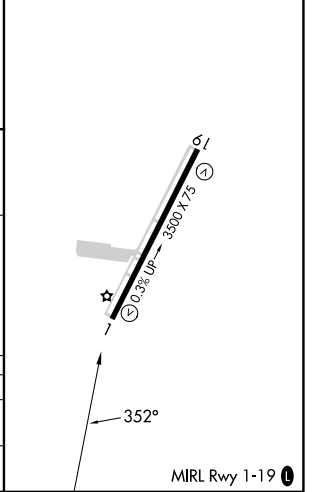


Procedure NA for arrival at TKA VOR/DME on T242 southeast bound and on V436 northbound.



ELEV 365	TDZE 363
----------	----------

Visual Segment - Obstacles.		HISLO TKA 3.9		2100	3200	TKA
Remain within 10 NM		2500		TKA R-352	TKA VOR/DME	TKA 1.2
172°		352°		5.1 NM		
2000		2000				
CATEGORY	A	B	C	D		
S-1	1040-1	677 (700-1)	1040-1 $\frac{7}{8}$	677 (700-1 $\frac{7}{8}$)		
CIRCLING	1040-1	675 (700-1)	1040-2	1200-2 $\frac{3}{4}$	835 (900-2 $\frac{3}{4}$)	



AK, 26 DEC 2024 to 20 FEB 2025

AK, 26 DEC 2024 to 20 FEB 2025