

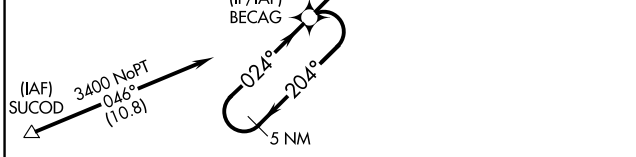
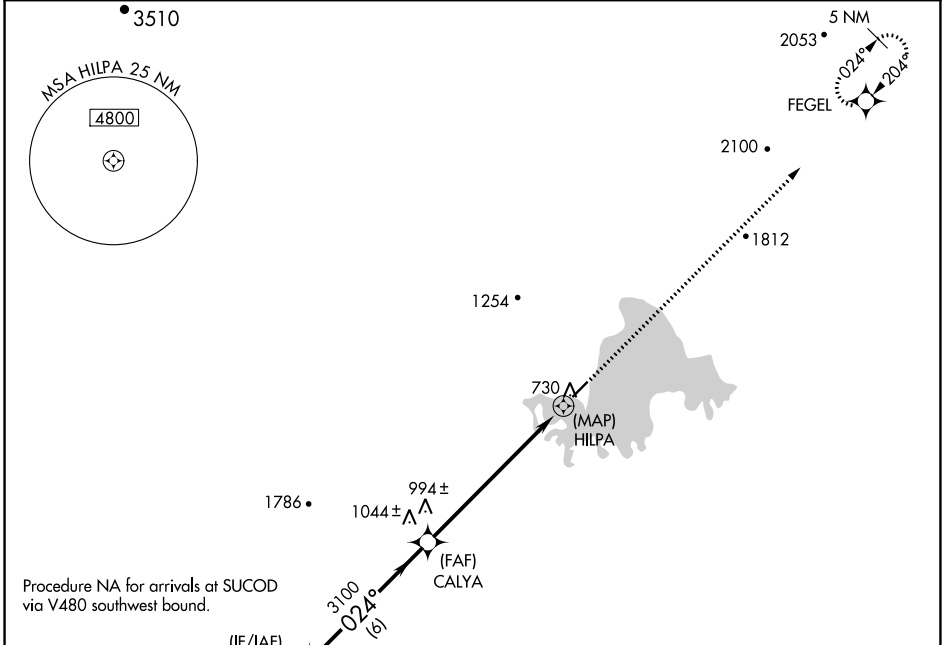
APP CRS 024°	Rwy Idg 4184 TDZE 682 Apt Elev 682
------------------------	---

RNAV (GPS) RWY 3

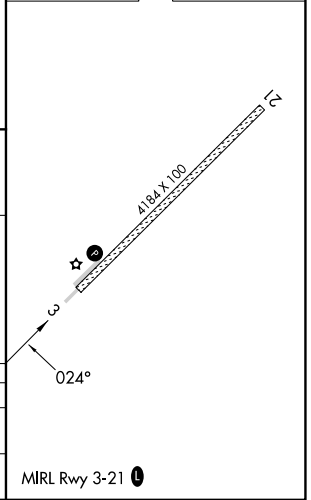
MINCHUMINA (MHM) (PAMH)

-36°C DME/DME RNP-0.3 NA. Circling NA west of Rwy 3-21.	MISSED APPROACH: Climb to 4200 direct FEGEL and hold.
---	---

AWOS-3P 135.55	ANCHORAGE CENTER 120.9 319.2	FAIRBANKS RADIO 122.2	CTAF 122.9 0
--------------------------	--	---------------------------------	------------------------



ELEV 682	TDZE 682
----------	----------



5 NM Holding Pattern	BECAG	CALYA	HILPA	4200	FEGEL
3400	← 204°	→ 024°	024°	↑	✧
		3100	1.6 NM to HILPA		
		3.06°	TCH 35		
	6 NM	5.3 NM	1.6	0.5	

CATEGORY	A	B	C	D
LNVA MDA	1360-1	678 (700-1)	1360-2	678 (700-2)
CIRCLING	1360-1	678 (700-1)	1460-2¼ 778 (800-2¼)	1460-2½ 778 (800-2½)

AK, 26 DEC 2024 to 20 FEB 2025

AK, 26 DEC 2024 to 20 FEB 2025