

VORTAC MCG <b>115.5</b> Chan <b>102</b>	APP CRS <b>282°</b>	Rwy Idg TDZE Apt Elev <b>N/A</b> <b>N/A</b> <b>343</b>
---	------------------------	---

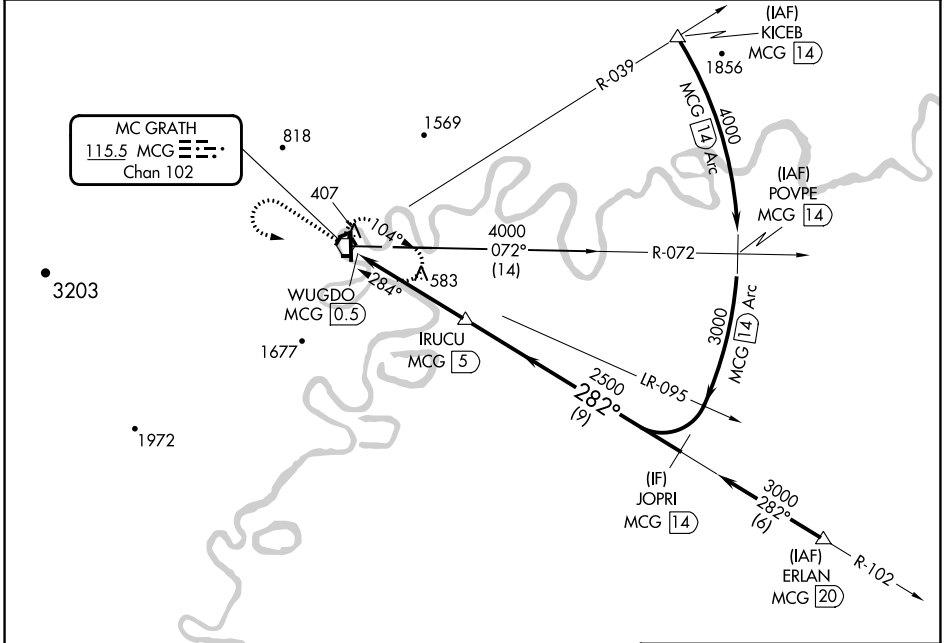
# VOR/DME-C

MC GRATH (MCG)(PAMC)

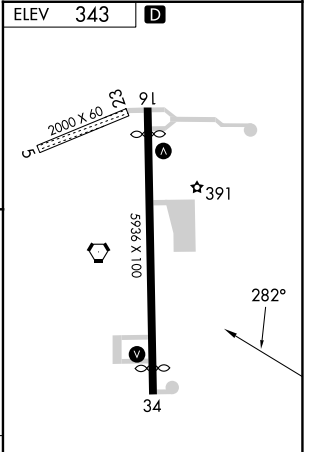
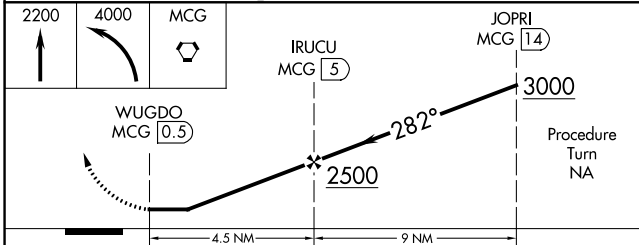
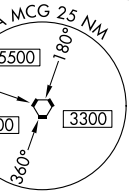
**⚠** Circling NA for Cat D west of Rwy 16-34.  
**⚠** -45°C

MISSED APPROACH: Climb to 2200 then climbing left turn to 4000 direct MCG VORTAC and hold, continue climb-in-hold to 4000.

ASOS <b>135.65</b>	ANCHORAGE CENTER <b>128.1 353.8</b>	MCGRATH RADIO <b>123.6</b> (CTAF) <b>Ⓛ</b>
-----------------------	--	---



MC GRATH  
**115.5** MCG **Ⓛ**  
Chan 102



CATEGORY	A	B	C	D
CIRCLING	1060-1	717 (800-1)	1460-3 1117 (1200-3)	1620-3 1277 (1300-3)

MIRL Rwy 5-23 and 16-34 **Ⓛ**

REIL Rwy 16 and 34 **Ⓛ**

AK, 26 DEC 2024 to 20 FEB 2025

AK, 26 DEC 2024 to 20 FEB 2025