

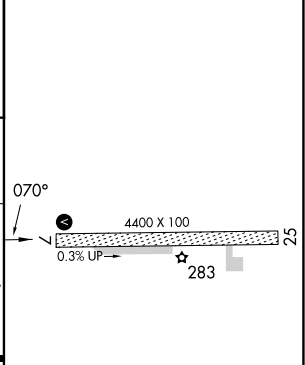
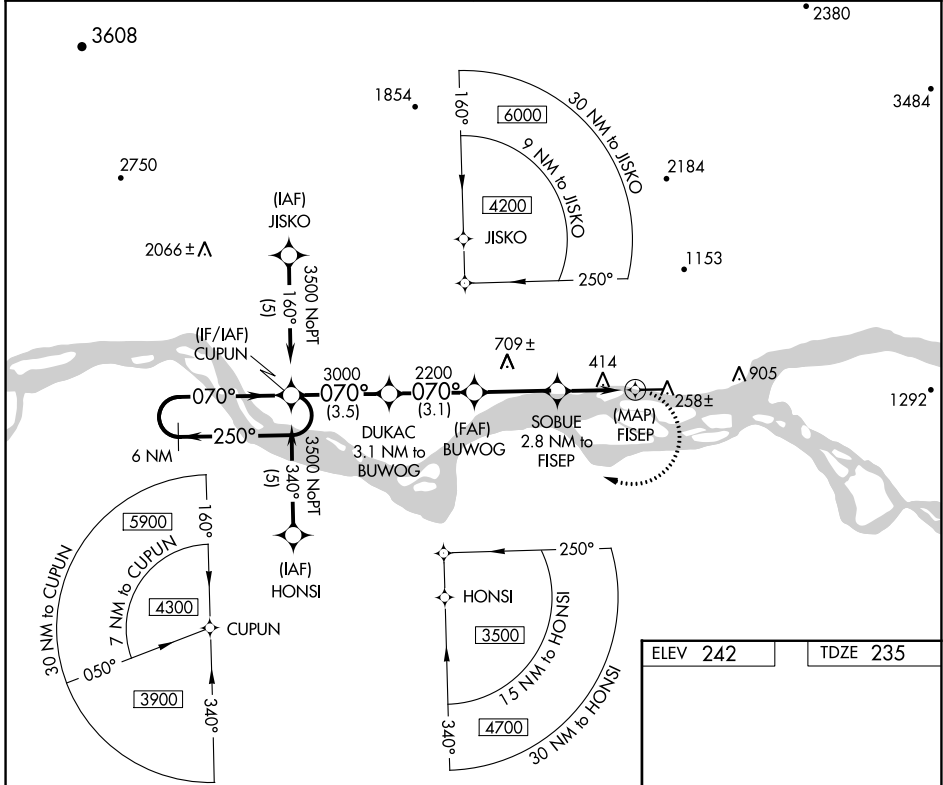
APP CRS	Rwy Idg	4400
070°	TDZE	235
	Apt Elev	242

RNAV (GPS) RWY 7

RALPH M CALHOUN MEML (TAL) (PATA)

RNP APCH-GPS.		MISSED APPROACH: Climbing right turn to 3500 direct CUPUN and hold.	
<p>▼ Circling NA north of Rwy 7-25. ▲ Rwy 7 helicopter visibility reduction below ¾ SM NA.</p>			

ASOS 135.1	ANCHORAGE CENTER 120.9 285.4	FAIRBANKS RADIO 122.65	CTAF 122.90
----------------------	----------------------------------------	----------------------------------	-----------------------



CATEGORY	A	B	C	D
LNVA MDA	760-1 525 (600-1)		760-1½ 525 (600-1½)	
CIRCLING	760-1 518 (600-1)		1260-3 1018 (1100-3)	

MIRL Rwy 7-25

AK, 26 DEC 2024 to 20 FEB 2025

AK, 26 DEC 2024 to 20 FEB 2025