


WAAS CH <b>77707</b> <b>W26A</b>	APP CRS <b>257°</b>	Rwy Idg <b>5200</b> TDZE <b>154</b> Apt Elev <b>154</b>
--	------------------------	---

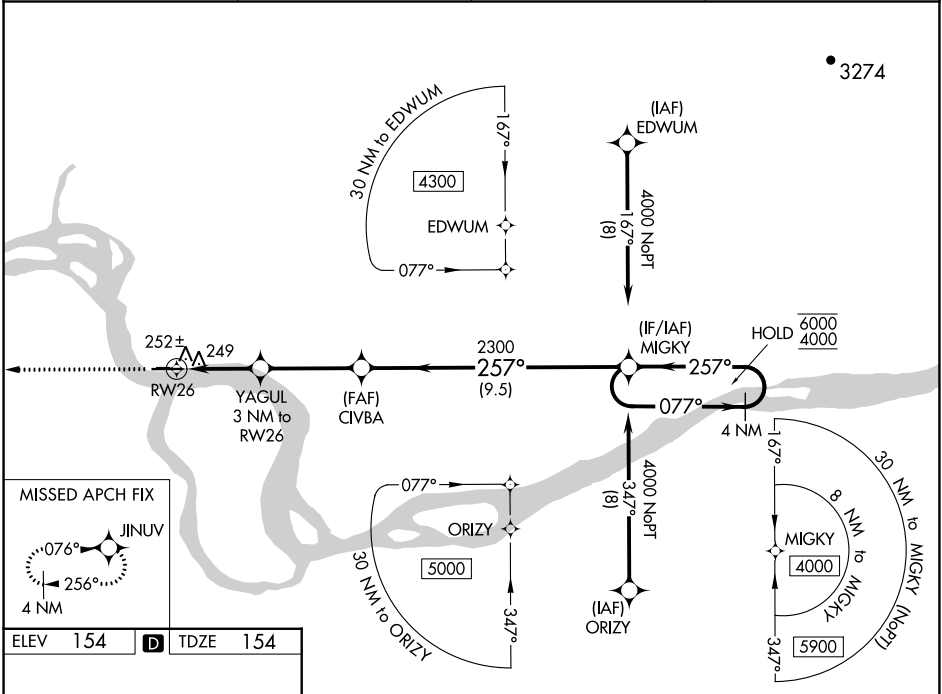
# RNAV (GPS) RWY 26

EDWARD G PITKA SR (GAL)(PAGA)

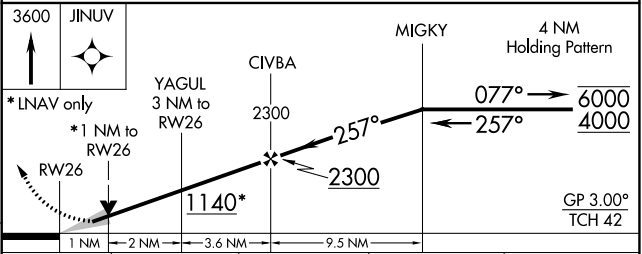
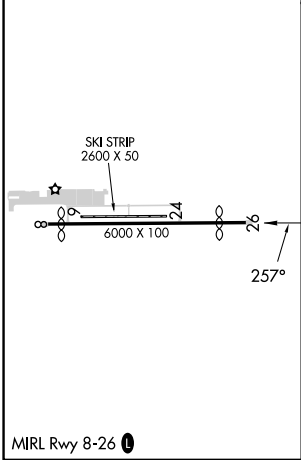
RNP APCH.  
 For uncompensated Baro-VNAV systems, LNAV/VNAV NA below -20°C or above 54°C.

MISSED APPROACH: Climb to 3600 direct JINUV and hold, continue climb-in-hold to 3600.

AWOS-3P <b>132.525</b>	ANCHORAGE CENTER <b>127.0 290.2</b>	FAIRBANKS RADIO <b>122.2</b>	CTAF <b>123.0</b>
---------------------------	--	---------------------------------	----------------------



ELEV 154	<b>D</b>	TDZE 154
----------	----------	----------



CATEGORY	A	B	C	D
LPV DA		404-1	250 (300-1)	
LNAV/VNAV DA		414-1	260 (300-1)	
LNAV MDA		520-1	366 (400-1)	
<b>C</b> CIRCLING	560-1 406 (500-1)	620-1 466 (500-1)	620-1½ 466 (500-1½)	720-2 566 (600-2)

AK, 26 DEC 2024 to 20 FEB 2025

AK, 26 DEC 2024 to 20 FEB 2025