

GALENA, ALASKA

AL-1229 (FAA)

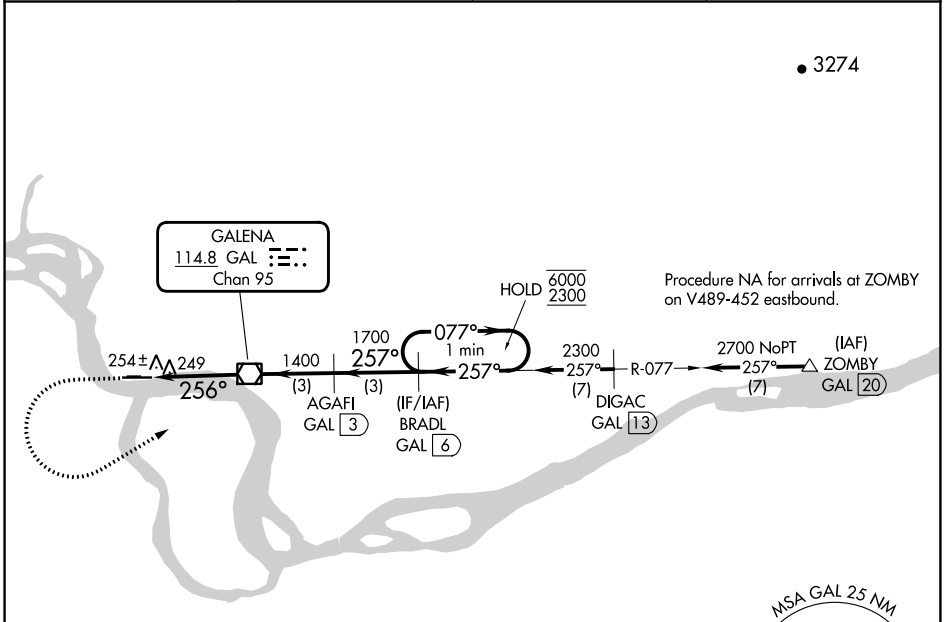
23278

VOR/DME GAL 114.8 Chan 95	APP CRS 256°	Rwy Idg TDZE Apt Elev	5200 153 154
---	------------------------	-----------------------------	---

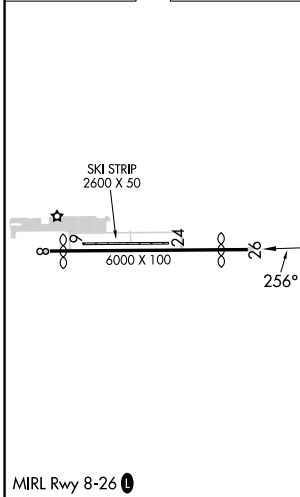
VOR RWY 26

EDWARD G PITKA SR (GAL)(PAGA)

DME required.		MISSED APPROACH: Climb to 600 then climbing left turn to 2300 on heading 047° and GAL VOR/DME R-077 to BRADL/6 DME and hold.	
AWOS-3P 132.525	ANCHORAGE CENTER 127.0 290.2	FAIRBANKS RADIO 122.2	CTAF 123.0



ELEV 154	D	TDZE 153
----------	----------	----------



	600	2300	GAL R-077	BRADL GAL 6	AGAFI GAL 3	BRADL GAL 6	One Minute Holding Pattern
	hdg 047°						
	GAL 2.7	GAL 3.7	GAL VOR/DME	1700	257°	257°	077°
	≤ 3.06°	TCH 60	1400				6000
	0.9	2.7 NM	3 NM	3 NM			2300
CATEGORY	A	B	C	D			
S-26	520-1 367 (400-1)						
CIRCLING	560-1 406 (500-1)	620-1 466 (500-1)	620-1½ 466 (500-1½)	740-2 586 (600-2)			

GALENA, ALASKA
Orig 05OCT23

EDWARD G PITKA SR (GAL)(PAGA)

64°44'N-156°56'W

VOR RWY 26

AK, 26 DEC 2024 to 20 FEB 2025

AK, 26 DEC 2024 to 20 FEB 2025