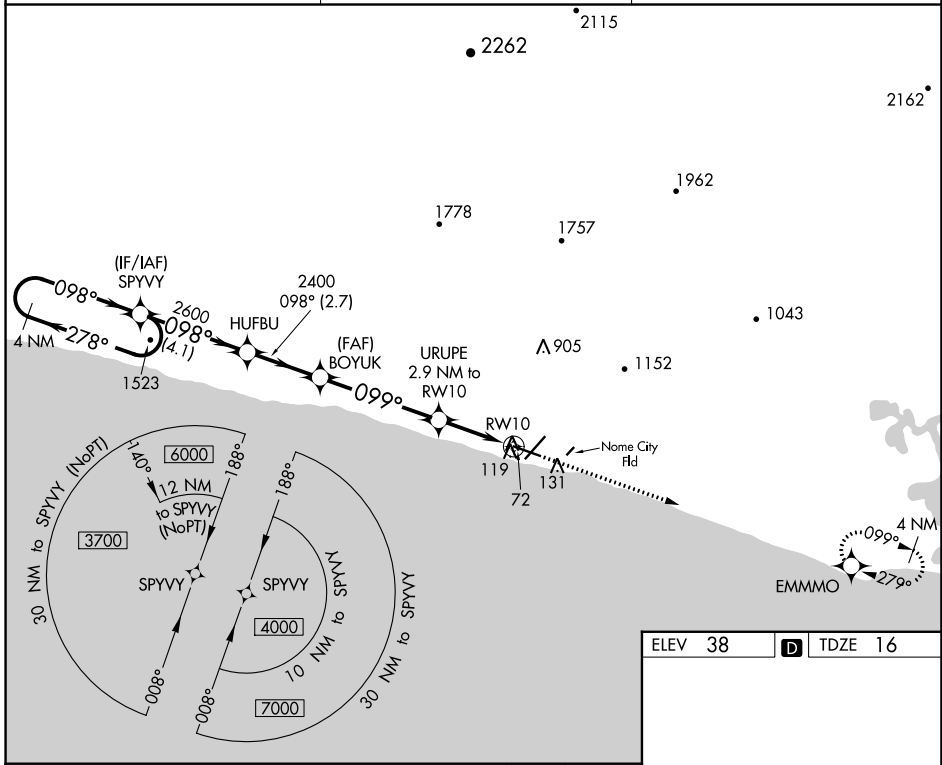


WAAS CH 40434 W10A	APP CRS 099°	Rwy Idg 6009 TDZE 16 Apt Elev 38
--	------------------------	---

RNAV (GPS) RWY 10

NOME (OME)(PAOM)

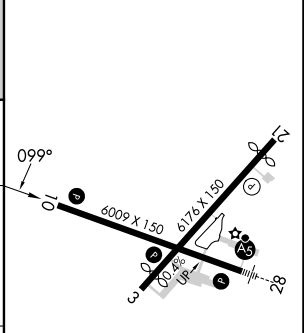
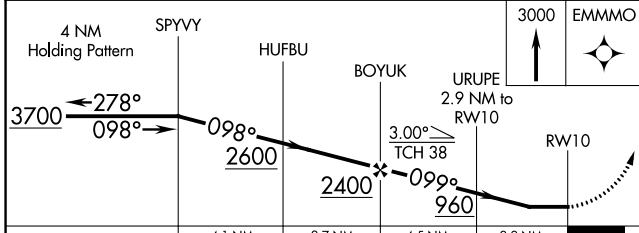
<p>▽ DME/DME RNP-0.3 NA. Helicopter visibility reduction below 1 SM NA. Night Landing: Rwy 21 NA, Rwy 10 operational VGSI required, remain on or above VGSI glidepath until threshold. Circling NA for Cats C and D north of Rwy 10-28.</p>		<p>MISSED APPROACH: Climb to 3000 direct EMMMO and hold.</p>
AFIS 119.925	ANCHORAGE CENTER 133.3 290.4	NOME RADIO 123.6 (CTAF) 1



AK, 26 DEC 2024 to 20 FEB 2025

AK, 26 DEC 2024 to 20 FEB 2025

ELEV 38	D TDZE 16
---------	------------------



CATEGORY	A	B	C	D
LP MDA	340-1		324 (400-1)	
LNAV MDA	380-1		364 (400-1)	
C CIRCLING	540-1	502 (600-1)	540-1½ 502 (600-1½)	700-2 662 (700-2)

REIL Rwy 3 and 10 **1**
HIRL Rwy 10-28 **1**
MIRL Rwy 3-21 **1**