

GALENA EIGHT DEPARTURE

AL-1234 (FAA)

FAIRBANKS INTL (FAI) (PAFA)

FAIRBANKS, ALASKA

AK, 26 DEC 2024 to 20 FEB 2025

DEPARTURE ROUTE DESCRIPTION

TAKEOFF RUNWAYS 2L/R: Climb on heading 038° to 2200, then left turn direct FAI VORTAC, thence

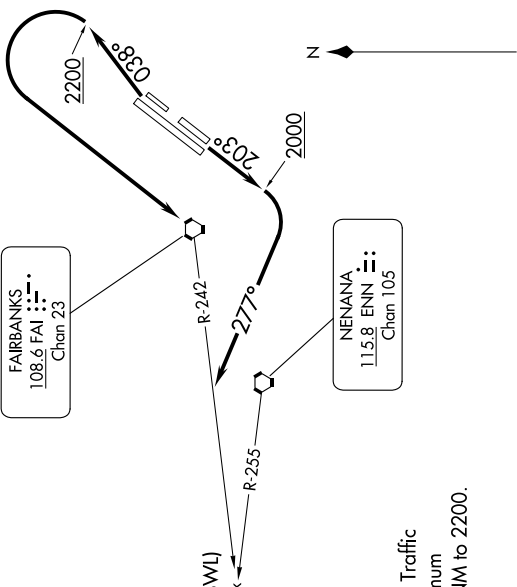
TAKEOFF RUNWAYS 20L/R: Climb on heading 203° to 2000, then right turn heading 277°, thence

. . . intercept FAI R-242 to ENN R-255, then on ENN R-255 and GAL R-077 to GAL VOR/DME, then continue climb on assigned route and altitude.

TOP ALTITUDE: ASSIGNED BY ATC

DME required.

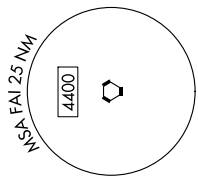
FAIRBANKS DEP CON
125.35 363.2



FAIRBANKS
108.6 FAI
Chan 23

NENANA
115.8 ENN
Chan 105

GALENA
114.8 GAL
Chan 95



TAKEOFF MINIMUMS
 Rws 2, 2W, 20, 20W: NA - Air Traffic
 Rws 2L/R: Standard with minimum
 climb of 230' per NM to 2200.
 Rws 20L/R: Standard.

NOTE: Chart not to scale.

GALENA EIGHT DEPARTURE

AK, 26 DEC 2024 to 20 FEB 2025