

HI-ILS Y or LOC Y RWY 20R

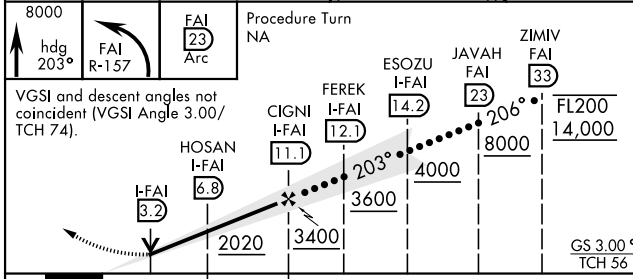
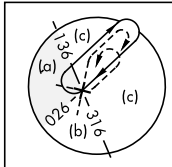
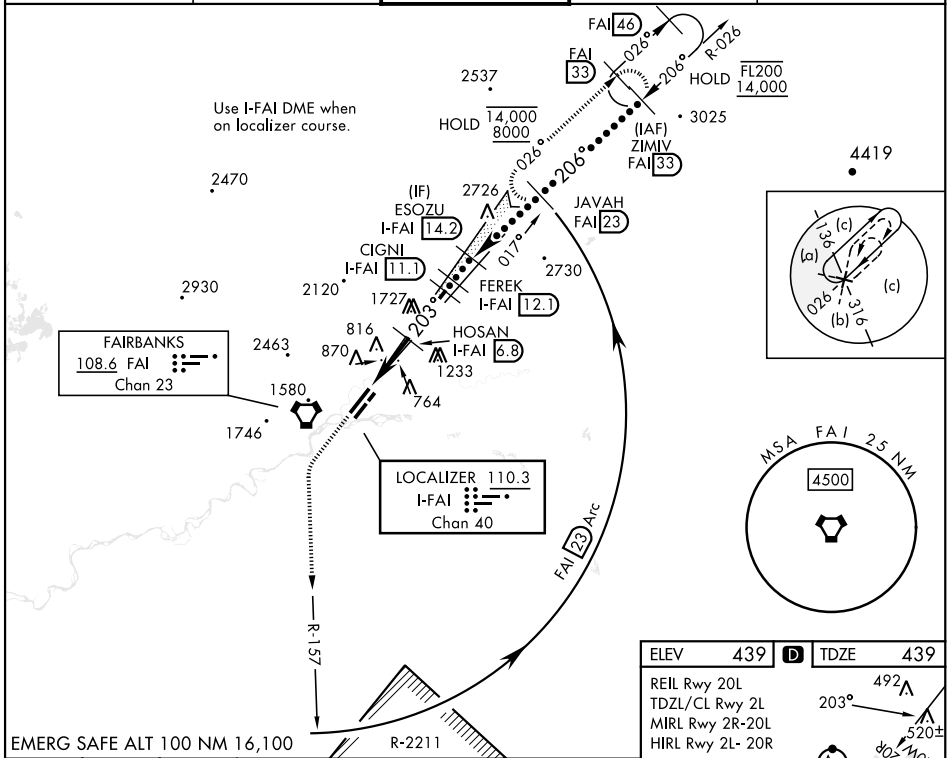
LOC/DME I-FAI 110.3 Chan 40	APCH CRS 203°	Rwy Ildg 11,050 TDZE 439 Arprt Elev 439	[USAF]	FAIRBANKS INTL (PAFA)
---	-------------------------	--	--------	-----------------------

DME required for procedure entry.

*When ALS inop, increase CAT E RVR to 40 and vis to 3/4 mile.
 **When ALS inop, increase CAT E vis to 1 3/8 miles.
 *** Circling not authorized W of Rwy 2L-20R.
 Circling not authorized to Rwy 2W-20W.

MALSRR (A5) MISSED APPROACH: Climb to 8000 on heading 203° and FAI VORTAC R-157 to 23 DME, arc northbound to JAVAH/FAI 23 DME and hold.

ATIS 124.4	APP CON 125.35 363.2	TOWER 118.3 257.8	GND CON 121.9	CLNC DEL 127.6
----------------------	--------------------------------	-----------------------------	-------------------------	--------------------------



ELEV 439	TDZE 439
----------	----------

REIL Rwy 20L
TDZL/CL Rwy 2L
MIRL Rwy 2R-20L
HIRL Rwy 2L-20R

CAUTION: Seaplane landing area 5400x100

519±

505, 538, 492, 520±

203°, 20°

11,800 x 150, 4510 x 75

SKI STRIP

TWR 538

Rwy 2L Ildg 11,050'
Rwy 20R Ildg 11,050'

CATEGORY	C	D	E
S-ILS 20R**	639/24	200 (200-1/2)	
S-LOC 20R**	880/45	441 (500-7/8)	
CIRCLING***	900-1 1/2 461 (500-1 1/2)	1020-2 581 (600-2)	1060-2 1/4 621 (700-2 1/4)

HI-ILS Y or LOC Y RWY 20R

AK, 26 DEC 2024 to 20 FEB 2025

AK, 26 DEC 2024 to 20 FEB 2025