

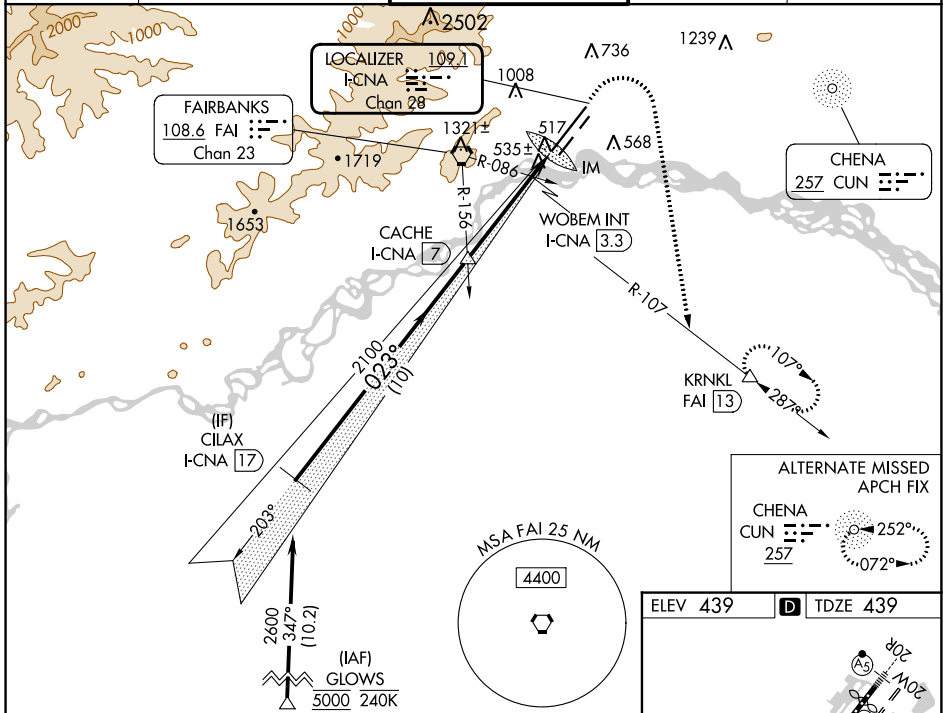
LOC/DME I-CNA <b>109.1</b> Chan 28	APP CRS <b>023°</b>	Rwy Idg TDZE <b>439</b> Apt Elev <b>439</b>	<b>11050</b>
--	------------------------	---	--------------

# ILS or LOC RWY 2L

FAIRBANKS INTL (FAI) (PAFA)

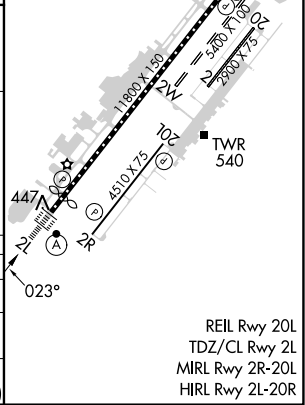
RNP APCH - GPS. DME required.	ALSIF-2 	MISSED APPROACH: Climb to 900 then climbing right turn to 5000 on heading 170° and FAI VORTAC R-107 to KRNL/FAI 13 DME and hold, continue climb-in-hold to 5000.
Circling NA west of Rwy 2L-20R. Circling NA to Rwsy 2W and 20W. For inop ALS, increase S-ILS 2L Cat E visibility to RVR 4000 and S-LOC 2L Cat C/D/E visibility to RVR 5500.		

ATIS <b>124.4</b>	FAIRBANKS APP CON <b>125.35 363.2</b>	FAIRBANKS TOWER <b>118.3 257.8</b>	GND CON <b>121.9</b>	CLNC DEL <b>127.6</b>
----------------------	--	---------------------------------------	-------------------------	--------------------------



VGSI and ILS glidepath not coincident (VGSI Angle 3.00/TCH 73).

CILAX I-CNA 17	CACHA I-CNA 7	WOBEM INT I-CNA 3.3	I-CNA 2	IM	KRNL
2600	2100	900	900	900	900
GS 3.00° TCH 56	023°	10 NM	3.7 NM	1.1 NM	0.2
900	5000	FAI R-107	hdg 170°		
2600	2100	2100	900	900	900
2600	2100	900	900	900	900



AK, 26 DEC 2024 to 20 FEB 2025

AK, 26 DEC 2024 to 20 FEB 2025