

LOC/DME I-FAI 110.3 Chan 40	APP CRS 203°	Rwy Idg 11050 TDZE 439 Apt Elev 439
--	------------------------	--

ILS Z or LOC Z RWY 20R

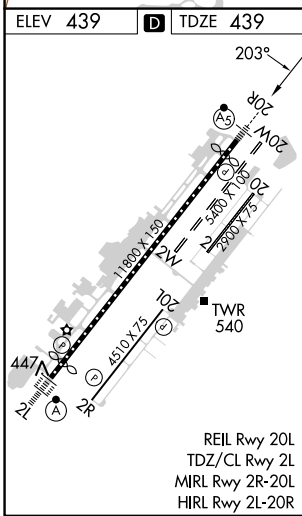
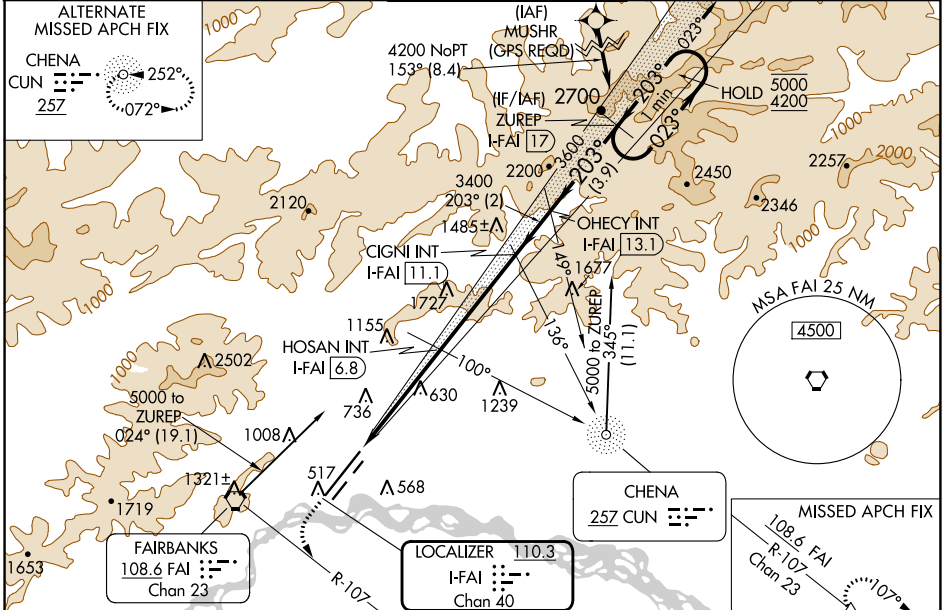
FAIRBANKS INTL (FAI) (PAFA)

DME required. DME required for procedure entry.

MALSR MISSED APPROACH: Climb to 1100 then climbing left turn to 3000 on FAI VORTAC R-107 to KRNKL/FAI VORTAC 13 DME and hold.

AS Circling NA west of Rwy 2L-20R. Circling NA to Rwy 2W and 20W. For inop ALS increase S-ILS 20R Cat E visibility to RVR 4000, increase S-LOC 20R Cat E visibility to 1 1/2 SM. #RVR 1800 authorized with use of FD or AP or HUD to DA.

ATIS 124.4	FAIRBANKS APP CON 125.35 363.2	FAIRBANKS TOWER 118.3 257.8	GND CON 121.9	CLNC DEL 127.6
----------------------	--	---------------------------------------	-------------------------	--------------------------



ELEV 439	TDZE 439	1100 3000 KRNKL VGSI and ILS glidepath not coincident (VGSI Angle 3.00/TCH 74). OHECY INT I-FAI 13.1 ZUREP I-FAI 17 One Minute Holding Pattern Use I-FAI DME when on the localizer course. CIGNI INT I-FAI 11.1 HOSAN INT I-FAI 6.8 I-FAI 3.2 I-FAI 2 2020* 3400 3600 203° 023° → 5000 ← 203° 4200 GS 3.00° TCH 56 1.2 3.6 NM 4.3 NM 2 NM 3.9 NM				
REIL Rwy 20L	TDZ/CL Rwy 2L	CATEGORY A B C D E S-ILS 20R# 639/24 200 (200-1/2) S-LOC 20R 880/24 441 (500-1/2) 880/45 441 (500-7/8) CIRCLING 880-1 900-1 900-1 1/2 1020-2 1060-2 1/4 441 (500-1) 461 (500-1) 461 (500-1 1/2) 581 (600-2) 621 (700-2 1/4)				

AK, 26 DEC 2024 to 20 FEB 2025

AK, 26 DEC 2024 to 20 FEB 2025