

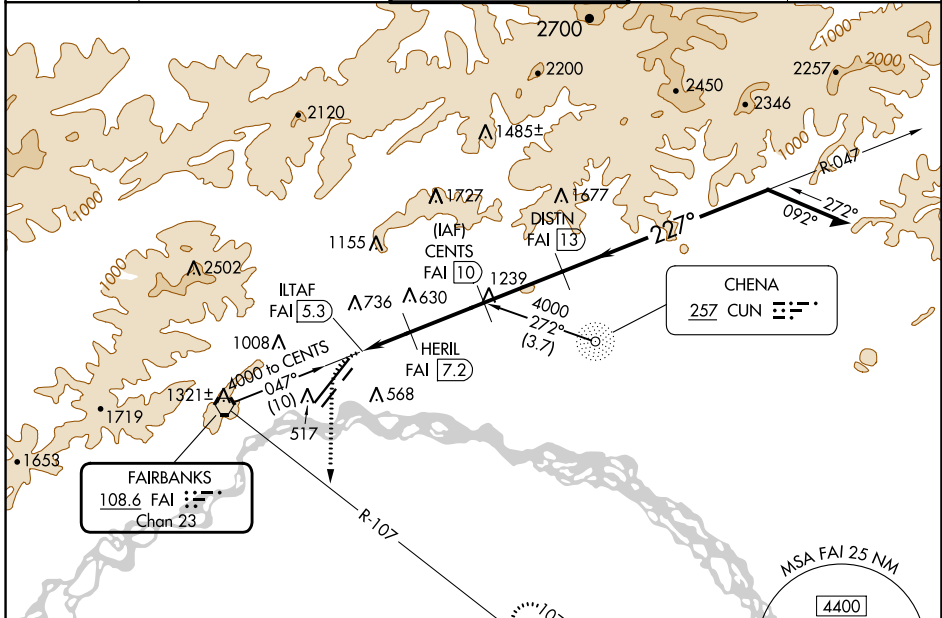
VORTAC FAI 108.6 Chan 23	APP CRS 227°	Rwy Idg 11050 TDZE 439 Apt Elev 439
---------------------------------------	------------------------	--

TACAN RWY 20R

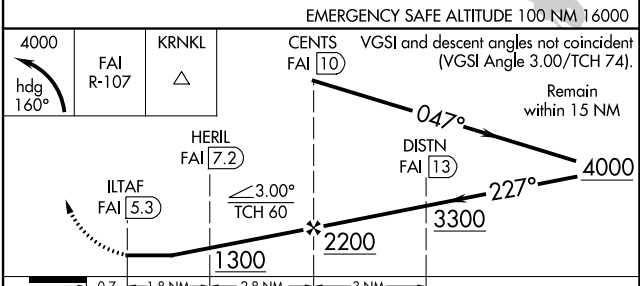
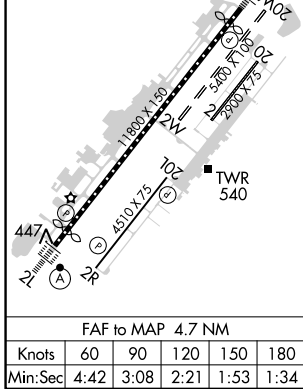
FAIRBANKS INTL (FAI) (PAFA)

	Circling NA to Rwy 2W and 20W. Circling NA west of Rwy 2L-20R. Rwy 20R helicopter visibility reduction below RVR 4000 NA. Inop table does not apply.	MALSR 	MISSED APPROACH: Climbing left turn to 4000 on heading 160° and FAI VORTAC R-107 to KRNL/FAI 13 DME and hold, continue climb-in-hold to 4000.	
				ATIS 124.4

ATIS 124.4	FAIRBANKS APP CON 125.35 363.2	FAIRBANKS TOWER 118.3 257.8	GND CON 121.9	CLNC DEL 127.6
----------------------	--	---------------------------------------	-------------------------	--------------------------



ELEV 439	D	TDZE 439
REIL Rwy 20L		
TDZ/CL Rwy 2L		
MIRL Rwy 2R-20L		
HIRL Rwy 2L-20R		



CATEGORY	A	B	C	D	E
S-20R	880/55	441 (500-1)	880-1 $\frac{3}{8}$	441 (500-1 $\frac{3}{8}$)	1000-1 $\frac{5}{8}$ 561 (600-1 $\frac{5}{8}$)
C CIRCLING	880-1 441 (500-1)	900-1 461 (500-1)	900-1 $\frac{1}{2}$ 461 (500-1 $\frac{1}{2}$)	1020-2 581 (600-2)	1120-2 $\frac{1}{2}$ 681 (700-2 $\frac{1}{2}$)

AK, 26 DEC 2024 to 20 FEB 2025

AK, 26 DEC 2024 to 20 FEB 2025