


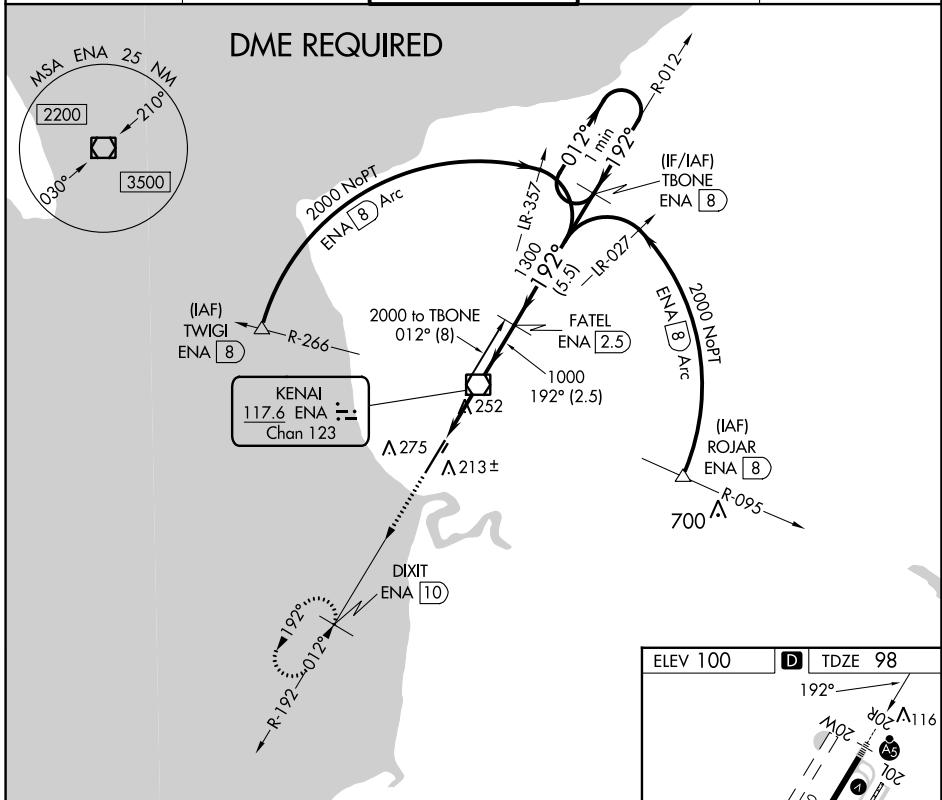
VOR/DME ENA <b>117.6</b> Chan <b>123</b>	APP CRS <b>192°</b>	Rwy Idg <b>7575</b> TDZE <b>98</b> Apt Elev <b>100</b>
--	------------------------	--

# VOR RWY 20R

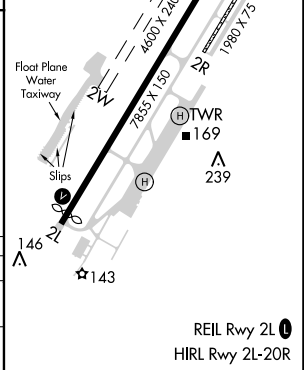
KENAI MUNI (ENA) (PAEN)

<p><b>⚠</b> Circling Rwy 2R, 20L NA at night. DME required. VDP NA when using Soldotna altimeter setting. When local altimeter setting not received, use Soldotna altimeter setting and increase all MDA 40 feet, increase S-20R Cats C and D visibility to RVR 5000. Circling Rwy 2W, 20W NA.</p>	<p>MALSR  </p>	<p>MISSED APPROACH: Climb to 2200 on ENA VOR/DME R-192 to DIXIT/ENA VOR/DME 10 DME and hold.</p>		
			<p>ATIS <b>133.35</b></p>	<p>ANCHORAGE CENTER <b>125.7 379.1</b></p>

ATIS <b>133.35</b>	ANCHORAGE CENTER <b>125.7 379.1</b>	KENAI TOWER* <b>121.3 (CTAF) 239.3</b>	GND CON <b>118.75</b>	KENAI RADIO <b>122.65</b>
-----------------------	--	---	--------------------------	------------------------------



2200 ↑ ENA R-192	DIXIT ENA 10	VGSI and descent angles not coincident (VGSI Angle 3.00/TCH 51).		TBONE ENA 8	One Minute Holding Pattern
ENA 2.3	ENA 1.2	ENA VOR/DME	FATEL ENA 2.5	192°	012° → 2000
TCH 51		3.44°	1000	1300	← 192°
1.2		1.2	2.5 NM	5.5 NM	
CATEGORY	A	B	C	D	
S-20R	520/24	422 (500-½)	520/40	422 (500-¾)	
CIRCLING	560-1 460 (500-1)	580-1 480 (500-1)	580-1½ 480 (500-½)	680-2 580 (600-2)	



AK, 26 DEC 2024 to 20 FEB 2025

AK, 26 DEC 2024 to 20 FEB 2025