

VOR/DME ENA 117.6 Chan 123	APP CRS 012°	Rwy Idg TDZE 94 Apt Elev 100	7575
--	------------------------	--	-------------

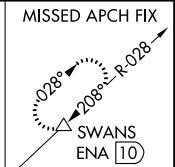
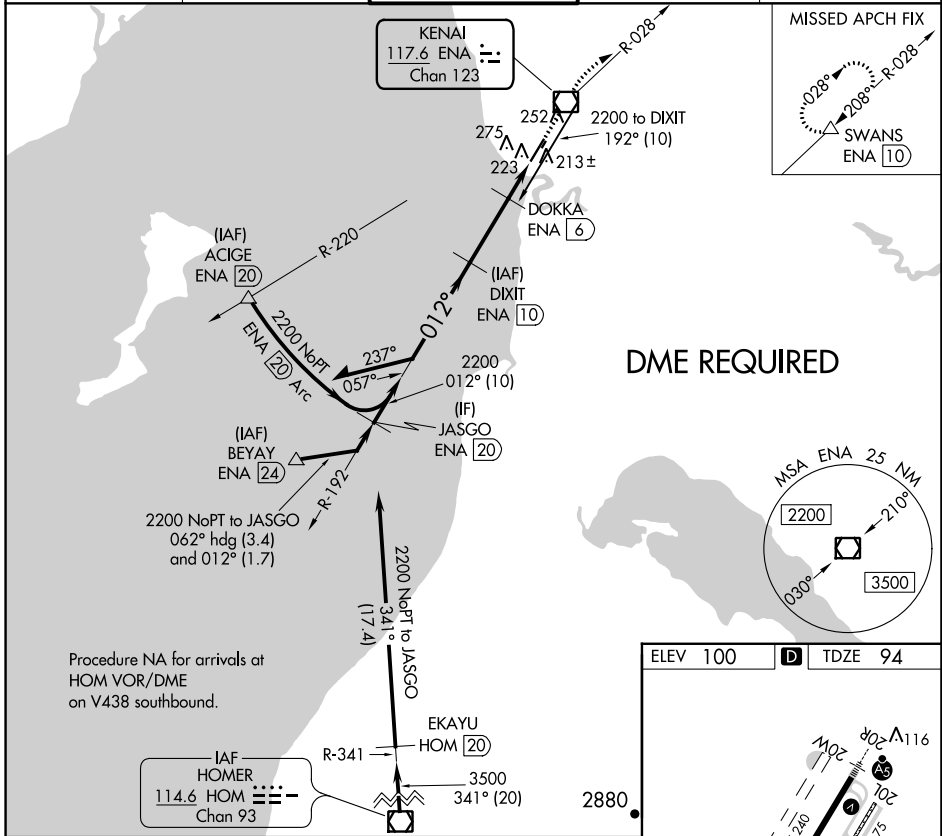
VOR RWY 2L

KENAI MUNI (ENA) (PAEN)

⚠ Circling Rwy 2R, 20L NA at night. DME required. When local altimeter setting not received, use Soldotna altimeter setting and increase all MDA 40 feet; increase S-2L Cat C and D visibility 1/8 mile and Circling Cat D visibility 1/4 mile. VDP NA with Soldotna altimeter setting. Circling Rwy 2W, 20W NA.

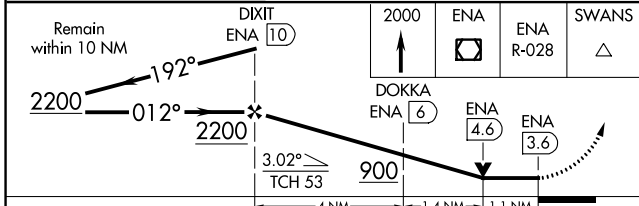
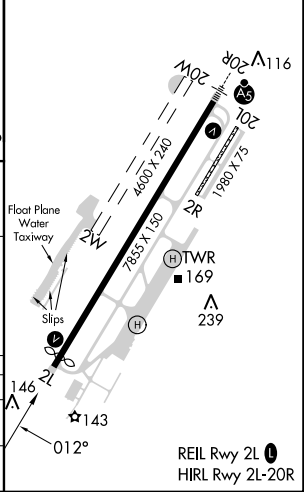
MISSED APPROACH: Climb to 2000 direct ENA VOR/DME and on ENA VOR/DME R-028 to SWANS/ENA 10 DME and hold.

ATIS 133.35	ANCHORAGE CENTER 125.7 379.1	KENAI TOWER* 121.3 (CTAF) 239.3	GND CON 118.75	KENAI RADIO 122.65
-----------------------	--	---	--------------------------	------------------------------



DME REQUIRED

ELEV 100	D TDZE 94
----------	------------------



CATEGORY	A	B	C	D
S-2L	480-1	386 (400-1)	480-1 1/8	386 (400-1 1/8)
C CIRCLING	560-1 460 (500-1)	580-1 480 (500-1)	580-1 1/2 480 (500-1 1/2)	680-2 580 (600-2)

AK, 26 DEC 2024 to 20 FEB 2025

AK, 26 DEC 2024 to 20 FEB 2025