

LOC/DME I-HOM 109.3 Chan 30	APP CRS 218°	Rwy Idg TDZE Apt Elev 6701 84 84
--	------------------------	--

LOC BC RWY 22

HOMER (HOM) (PAHO)

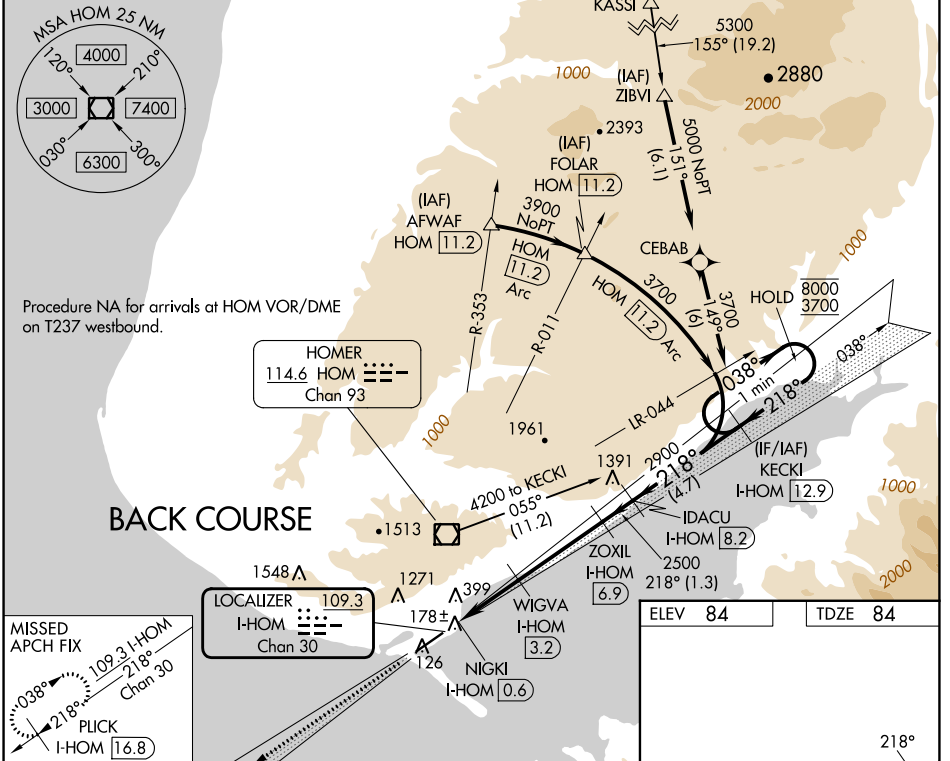
DME required. RNP APCH-GPS. From KASSI.

⚠ Inop table does not apply to S-LOC 22 Cats A and B. When Homer altimeter setting not received, procedure NA. Rwy 22 helicopter visibility reduction below 3/4 SM NA. Circling NA northwest of Rwy 4-22. Circling NA to waterways 6W and 24W. For inop ALS, increase S-LOC 22 Cat C and D visibility to 1 1/8 SM.

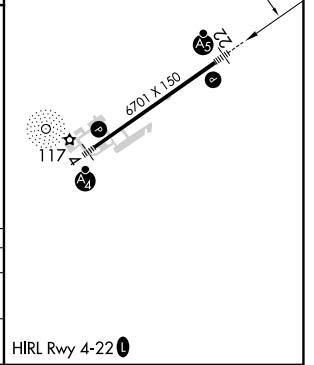


MISSED APPROACH: Climb to 2600 on I-HOM localizer SW course 218° to PLICK/16.8 DME and hold.

AFIS 135.65	ANCHORAGE CENTER 125.9 270.3	HOMER RADIO 123.6 (CTAF) 0	UNICOM 122.7 123.0 123.05
-----------------------	--	---	-------------------------------------



<p>MISSED APCH FIX</p> <p>PLICK I-HOM [16.8]</p> <p>I-HOM 2600</p> <p>I-HOM SW crs 218°</p>	<p>PLICK I-HOM [16.8]</p>	<p>Use I-HOM DME when on the localizer course.</p>	<p>WIGVA I-HOM [3.2]</p> <p>ZOXIL I-HOM [8.2]</p> <p>IDACU I-HOM [8.2]</p> <p>KECKI I-HOM [12.9]</p> <p>One Minute Holding Pattern</p>	
	<p>NIGKI I-HOM [0.6]</p> <p>WIGVA I-HOM [3.2]</p> <p>TCH 55</p> <p>1260</p> <p>2500</p> <p>2900</p> <p>038°</p> <p>218°</p> <p>8000</p> <p>3700</p>	<p>0.7</p> <p>2.6 NM</p> <p>3.7 NM</p> <p>1.3 NM</p> <p>4.7 NM</p>	<p>0.7</p> <p>2.6 NM</p> <p>3.7 NM</p> <p>1.3 NM</p> <p>4.7 NM</p>	<p>0.7</p> <p>2.6 NM</p> <p>3.7 NM</p> <p>1.3 NM</p> <p>4.7 NM</p>
CATEGORY	A	B	C	D
S-LOC 22	500-1 416 (500-1)			
CIRCLING	500-1 416 (500-1)	540-1 456 (500-1)	540-1 1/2 456 (500-1 1/2)	700-2 616 (700-2)



AK, 26 DEC 2024 to 20 FEB 2025

AK, 26 DEC 2024 to 20 FEB 2025