

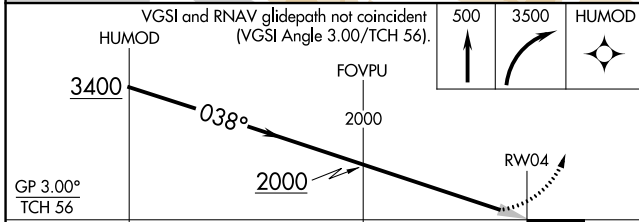
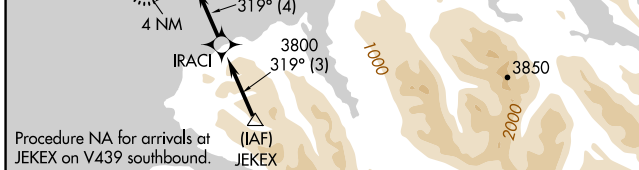
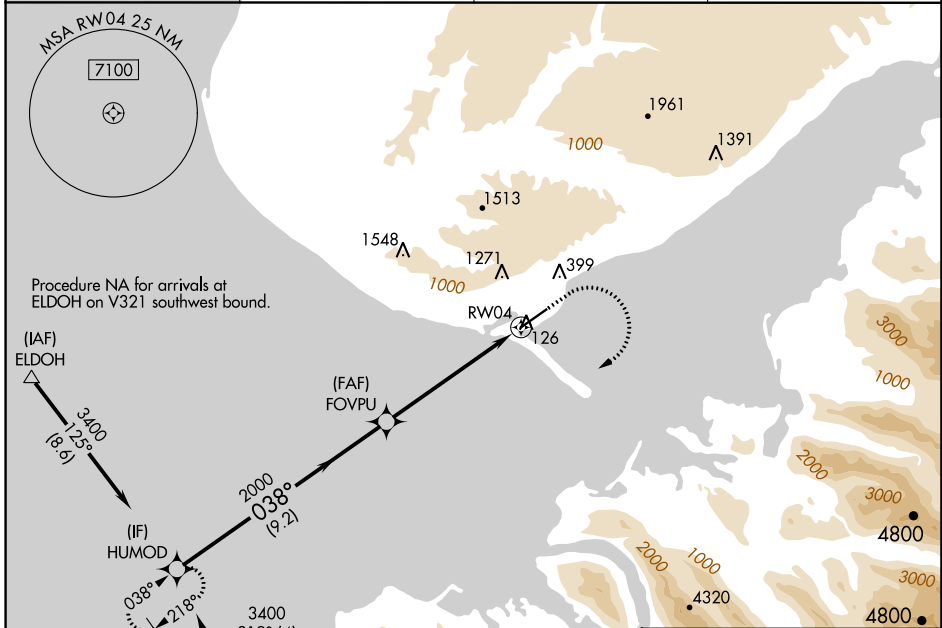
WAAS CH 86302 W04A	APP CRS 038°	Rwy Idg TDZE 78 Apt Elev 84	6701
--	------------------------	---	-------------

RNAV (GPS) Z RWY 4

HOMER (HOM) (PAHO)

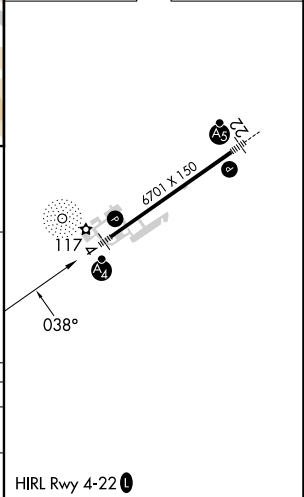
RNP APCH. ▼ For uncompensated Baro-VNAV systems, LNAV/VNAV NA below -21°C or above 54°C. Inop table does not apply to LPV all Cats.	MALSF ⦿ ≡	MISSED APPROACH: Climb to 500 then climbing right turn to 3500 direct HUMOD and hold.
--	--------------	---

AFIS 135.65	ANCHORAGE CENTER 125.9 270.3	HOMER RADIO 123.6 (CTAF) ①	UNICOM 122.7 123.0 123.05
-----------------------	--	--------------------------------------	-------------------------------------



CATEGORY	A	B	C	D
LPV DA		444-1	366 (400-1)	
LNAV/VNAV DA		558-1 $\frac{3}{8}$	480 (500-1 $\frac{3}{8}$)	

ELEV 84	TDZE 78
---------	---------



AK, 26 DEC 2024 to 20 FEB 2025

AK, 26 DEC 2024 to 20 FEB 2025