

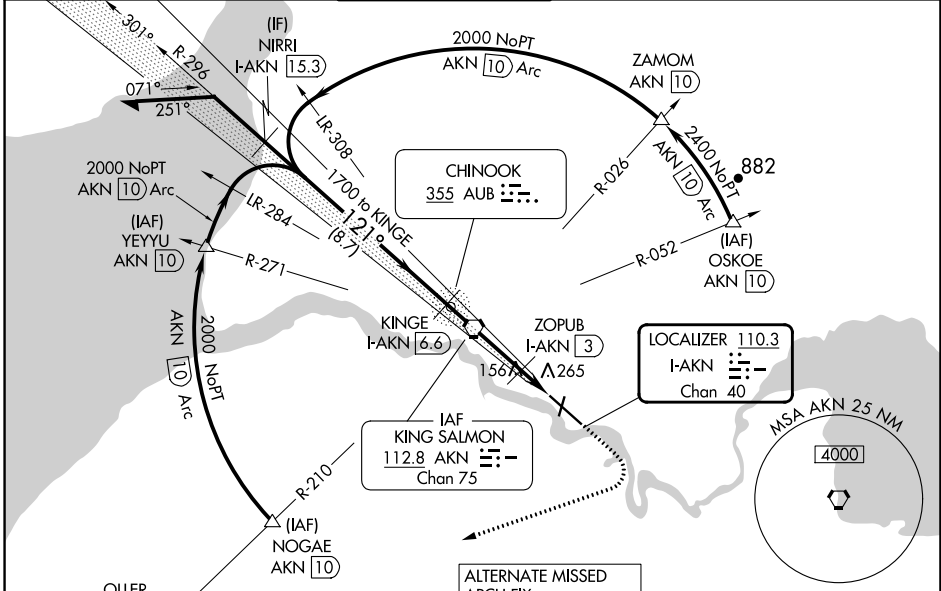
LOC/DME I-AKN <b>110.3</b> Chan 40	APP CRS <b>121°</b>	Rwy Idg TDZE Apt Elev	<b>8501</b> <b>62</b> <b>73</b>
--	------------------------	-----------------------------	---------------------------------------

# ILS Y or LOC Y RWY 12

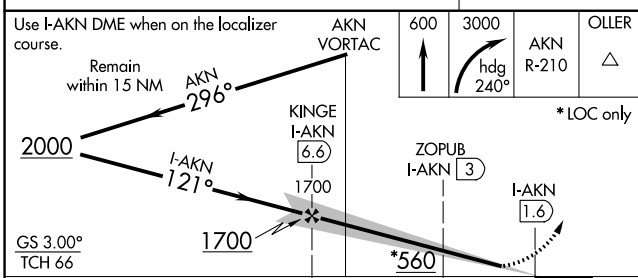
KING SALMON (AKN)(PAKN)

DME required.	MALSRL 	MISSED APPROACH: Climb to 600 then climbing right turn to 3000 on heading 240° and AKN VORTAC R-210 to OLLER/15 DME and hold.
 Autopilot coupled approach NA below 700. For inop ALS, increase S-ILS 12 Cat E visibility to RVR 4000. For inop ALS, increase S-LOC 12 Cat C-E visibility to RVR 5500. When control tower closed: increase S-ILS 12 and S-LOC 12 visibilities to RVR 5000 all Cats. When control tower closed, inop table does not apply.		

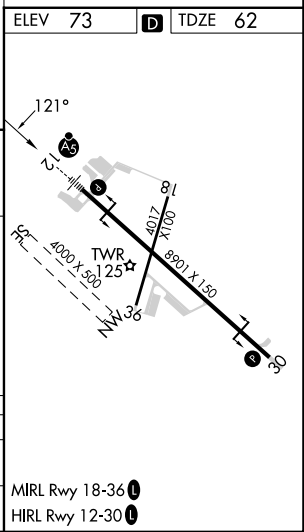
ATIS <b>128.8</b>	ANCHORAGE CENTER <b>124.8 354.0</b>	KING SALMON TOWER* <b>118.3 279.5</b>	GND CON <b>121.9</b>	UNICOM <b>122.95</b>	CTAF <b>121.90 352.05</b>
----------------------	--	--	-------------------------	-------------------------	------------------------------



ELEV 73	<b>D</b> TDZE 62
---------	------------------



Use I-AKN DME when on the localizer course.	Remain within 15 NM	AKN 296°	AKN VORTAC	600	3000	AKN R-210	OLLER
2000	I-AKN 121°	KINGE I-AKN 6.6	1700	ZOPUB I-AKN 3	I-AKN 1.6	*LOC only	
GS 3.00°	TCH 66						
CATEGORY	A	B	C	D	E		
S-ILS 12	262/24		200 (200-½)				
S-LOC 12	420/24	358 (400-½)	420/30	358 (400-¾)			



AK, 26 DEC 2024 to 20 FEB 2025

AK, 26 DEC 2024 to 20 FEB 2025