

VORTAC AKN <b>112.8</b> Chan 75	APP CRS <b>116°</b>	Rwy Idg TDZE Apt Elev <b>8501</b> <b>62</b> <b>73</b>
---------------------------------------	------------------------	--

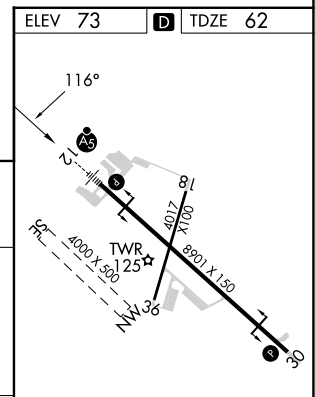
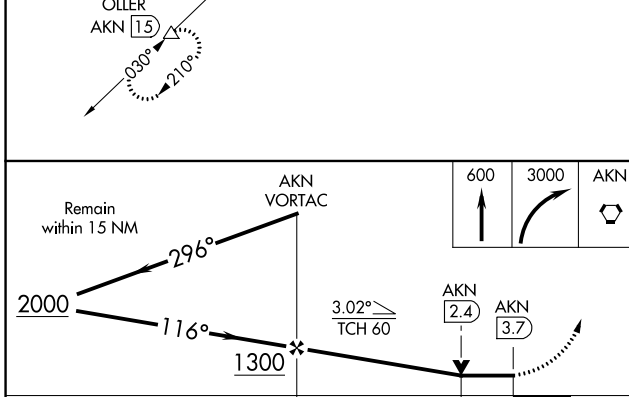
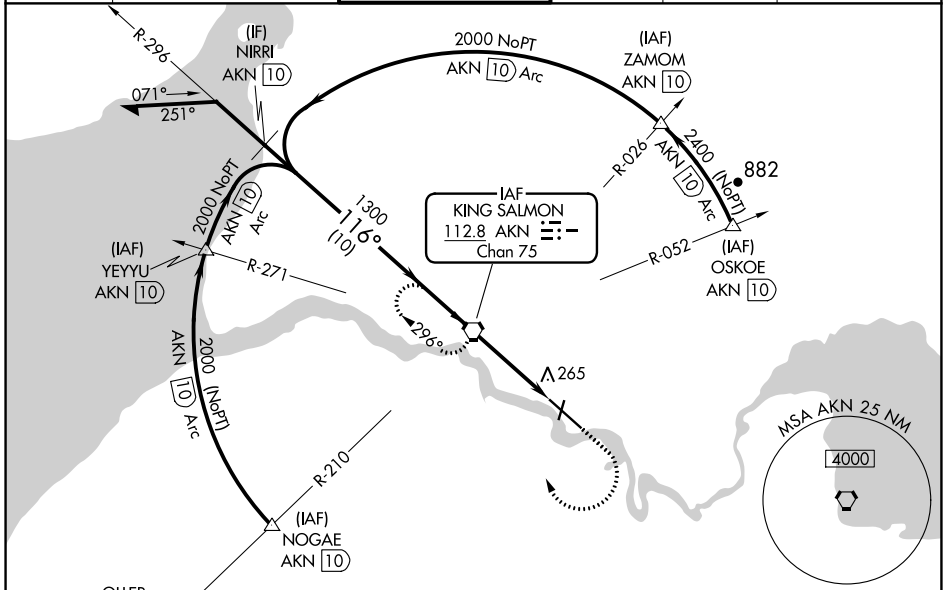
# VOR Y or TACAN Y RWY 12

KING SALMON (AKN)(PAKN)

**⚠** For inop ALS, increase S-12 Cat E visibility to 1 3/8 SM. When control tower closed, increase S-12 all Cats visibility to RVR 5000. When control tower closed, inop table doesn't apply to Cats A/B. When control tower closed and ALS inop, increase S-12 Cats C/D/E visibility to 1 3/8 SM.

**MALSRL**  
**⚠** MISSED APPROACH: Climb to 600 then climbing right turn to 3000 direct AKN VORTAC and hold, continue climb-in-hold to 3000. (TACAN AIRCRAFT: Climbing right turn to 3000 on heading 238° and on AKN VORTAC R-210 to OLLER/ 15 DME and hold SW, right turn, 030° inbound.)

ATIS <b>128.8</b>	ANCHORAGE CENTER <b>124.8 354.0</b>	KING SALMON TOWER* <b>118.3 279.5</b>	GND CON <b>121.9</b>	UNICOM <b>122.95</b>	CTAF <b>121.9</b> <b>352.05</b>
----------------------	--	--	-------------------------	-------------------------	------------------------------------



CATEGORY	A	B	C	D	E
S-12	520/24	458 (500-1/2)	520/45	458 (500-3/4)	
<b>C</b> CIRCLING	580-1	507 (600-1)	580-1 1/2 507 (600-1 1/2)	900-2 3/4 827 (900-2 3/4)	960-3 887 (900-3)

MIRL Rwy 18-36	<b>L</b>				
HIRL Rwy 12-30	<b>L</b>				
FAF to MAP 3.7 NM					
Knots	60	90	120	150	180
Min:Sec	3:42	2:28	1:51	1:29	1:14

AK, 26 DEC 2024 to 20 FEB 2025

AK, 26 DEC 2024 to 20 FEB 2025