

# HI-ILS or LOC RWY 15

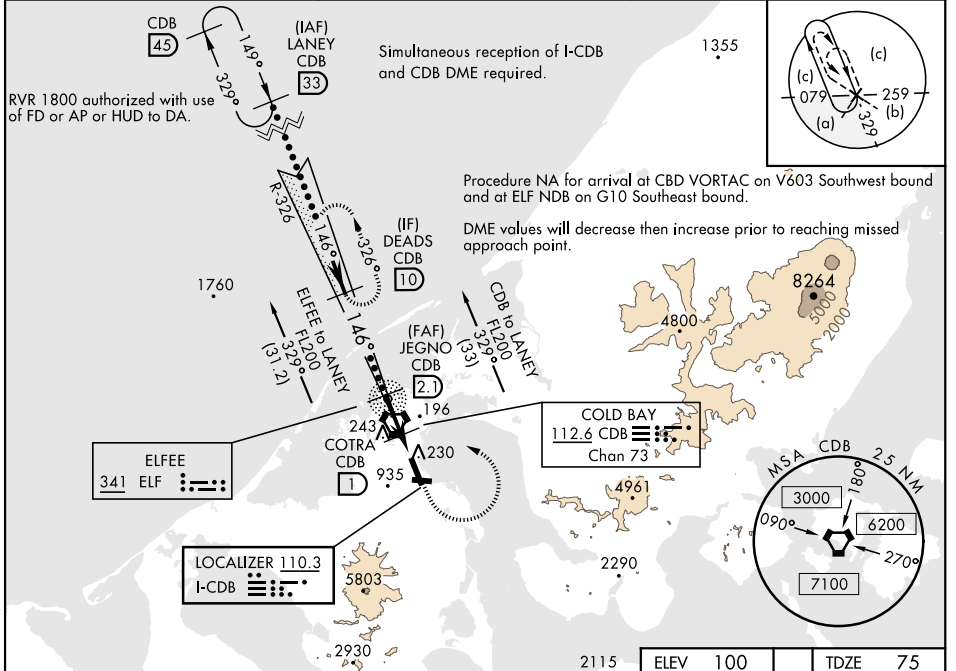
LOC I-CDB <b>110.3</b>	APCH CRS <b>146°</b>	Rwy Ildg 10,179 TDZE 75 Arprt Elev 100	AL-1241 [USAF]	COLD BAY (CDB) (PACD)
---------------------------	-------------------------	---	----------------	-----------------------

\* When ALS inop, increase CAT E RVR to 4000.  
 \*\* When ALS inop, increase RVR to 5500.  
 \*\*\* Circling not authorized SW of Rwy 15-33.

MALSR

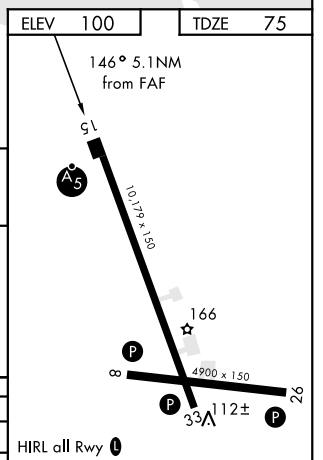
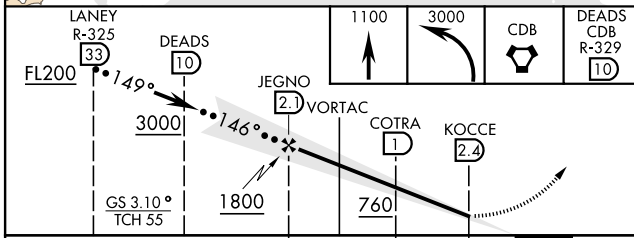
MISSED APPROACH: Climb to 1100, then climbing left turn to 3000 direct CDB VORTAC, then on CDB R-329 to DEADS/CDB 10 DME and hold.

ANCHORAGE CENTER <b>118.5 278.3</b>	COLD BAY RADIO <b>123.6 (CTAF) 0</b>	ASOS <b>135.75</b>
--	---	-----------------------



EMERG SAFE ALT 100 NM 11,600

ELEV 100 | TDZE 75



CATEGORY	C	D	E
S-ILS 15 *	275/24	200	(300-1/2)
S-LOC 15 **	440/35	365	(400-3/8)
CIRCLING ***	560-1 1/2 460 (500-1 1/2)	860-2 1/2 760 (800-2 1/2)	940-3 840 (900-3)

HIRL all Rwy 0					
FAF to MAP 4.5 NM					
Knots	120	140	160	180	200
Min:Sec	2:15	1:56	1:41	1:30	1:21

COLD BAY, ALASKA 55°12'N-162°44'W COLD BAY (CDB) (PACD)

# HI-ILS or LOC RWY 15

AK, 26 DEC 2024 to 20 FEB 2025

AK, 26 DEC 2024 to 20 FEB 2025