

LOC I-CDB <b>110.3</b>	APP CRS <b>326°</b>	Rwy ldg <b>10179</b> TDZE <b>93</b> Apt Elev <b>100</b>
---------------------------	------------------------	---

# LOC BC RWY 33

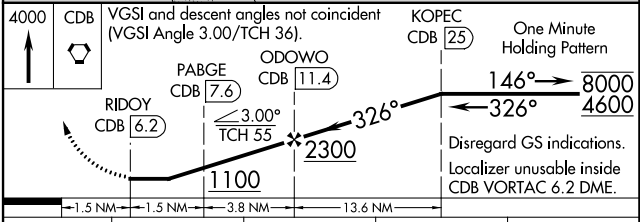
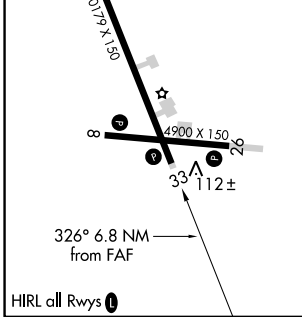
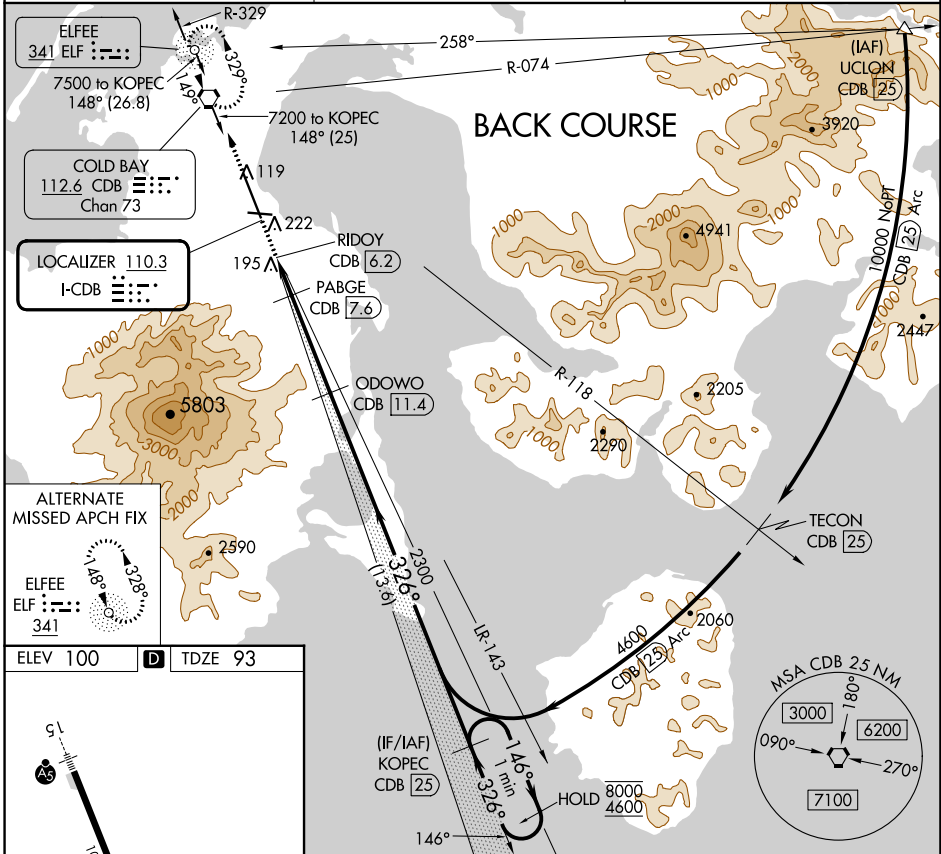
COLD BAY (CDB) (PACD)

DME required.

⚠ Circling NA for Cat A southwest of Rwy 15-33 at night. DME from CDB VORTAC.  
 ⚠ Simultaneous reception of I-CDB and CDB DME required. Circling NA for Cats B/C/D southwest of Rwy 15-33.

MISSED APPROACH: Climb to 4000 direct CDB VORTAC and hold, continue climb-in-hold to 4000.

ASOS <b>135.75</b>	ANCHORAGE CENTER <b>118.5 278.3</b>	COLD BAY RADIO <b>123.6 (CTAF) 0</b>
-----------------------	--	---



CATEGORY	A	B	C	D
S-33		420-1 $\frac{1}{8}$	327 (400-1 $\frac{1}{8}$ )	
<b>C</b> CIRCLING	540-1 $\frac{1}{8}$ 440 (500-1 $\frac{1}{8}$ )	560-1 $\frac{1}{8}$	460 (500-1 $\frac{1}{8}$ )	860-2 $\frac{1}{2}$ 760 (800-2 $\frac{1}{2}$ )

AK, 26 DEC 2024 to 20 FEB 2025

AK, 26 DEC 2024 to 20 FEB 2025