

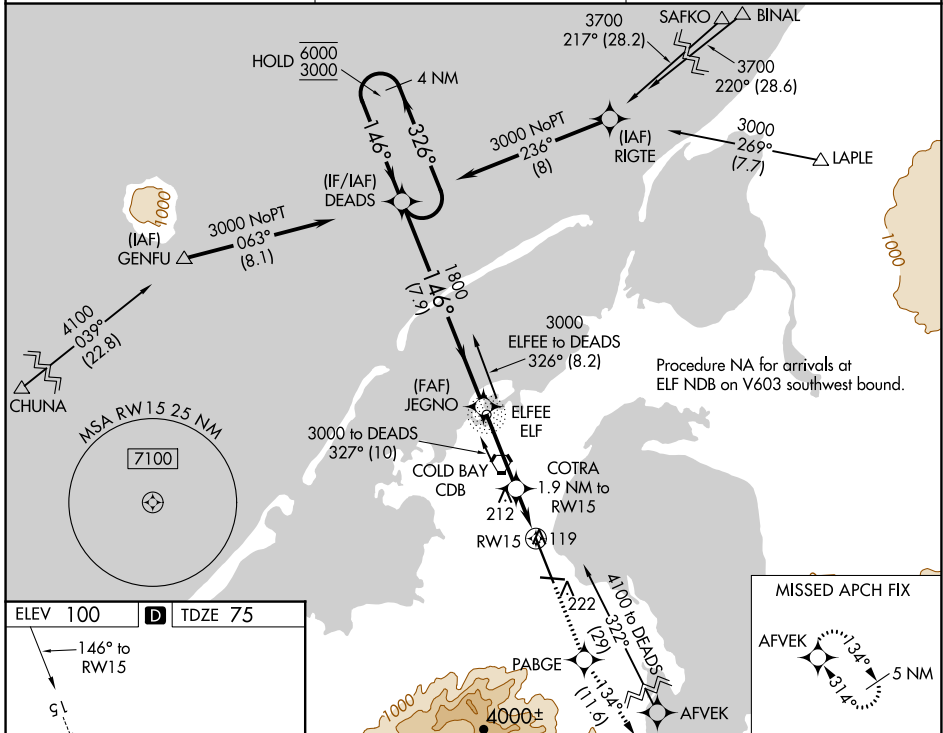
WAAS CH <b>45612</b> <b>W15A</b>	APP CRS <b>146°</b>	Rwy Idg TDZE <b>75</b> Apt Elev <b>100</b>	<b>10179</b>
--	------------------------	--	--------------

# RNAV (GPS) RWY 15

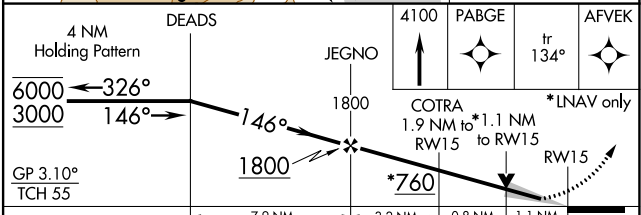
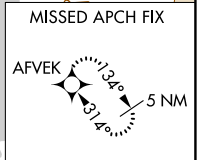
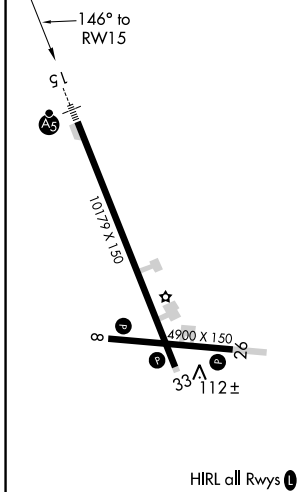
COLD BAY (CDB) (PACD)

RNP APCH.	MALSR	MISSED APPROACH: Climb to 4100 direct PABGE and on track 134° to AFVEK and hold, continue climb-in-hold to 4100.
<p>⚠ For uncompensated Baro-VNAV systems, LNAV/VNAV NA below -10°C or above 54°C. Circling NA for Cat A southwest of Rwy 15-33 at night. Circling NA for Cats B/C/D southwest of Rwy 15-33. For inop ALS, increase LNAV/VNAV all Cats visibility to RVR 4000 and LNAV Cat C/D visibility to RVR 6000. #RVR 1800 authorized with use of FD or AP or HUD to DA.</p>		

ASOS <b>135.75</b>	ANCHORAGE CENTER <b>118.5 278.3</b>	COLD BAY RADIO <b>123.6 (CTAF) 0</b>
-----------------------	--	---



ELEV 100	<b>D</b>	TDZE 75
----------	----------	---------



CATEGORY	A	B	C	D
LPV DA#		275/24	200 (200-1/2)	
LNAV/VNAV DA		325/24	250 (300-1/2)	
LNAV MDA	480/24	405 (400-1/2)	480/40	405 (400-3/4)
	540-1 440 (500-1)	560-1 460 (500-1)	560-1 1/2 460 (500-1 1/2)	860-2 1/2 760 (800-2 1/2)

AK, 26 DEC 2024 to 20 FEB 2025

AK, 26 DEC 2024 to 20 FEB 2025