

WAAS CH 49106 W33A	APP CRS 326°	Rwy Idg 10179 TDZE 93 Apt Elev 100
--	------------------------	---

RNAV (GPS) RWY 33

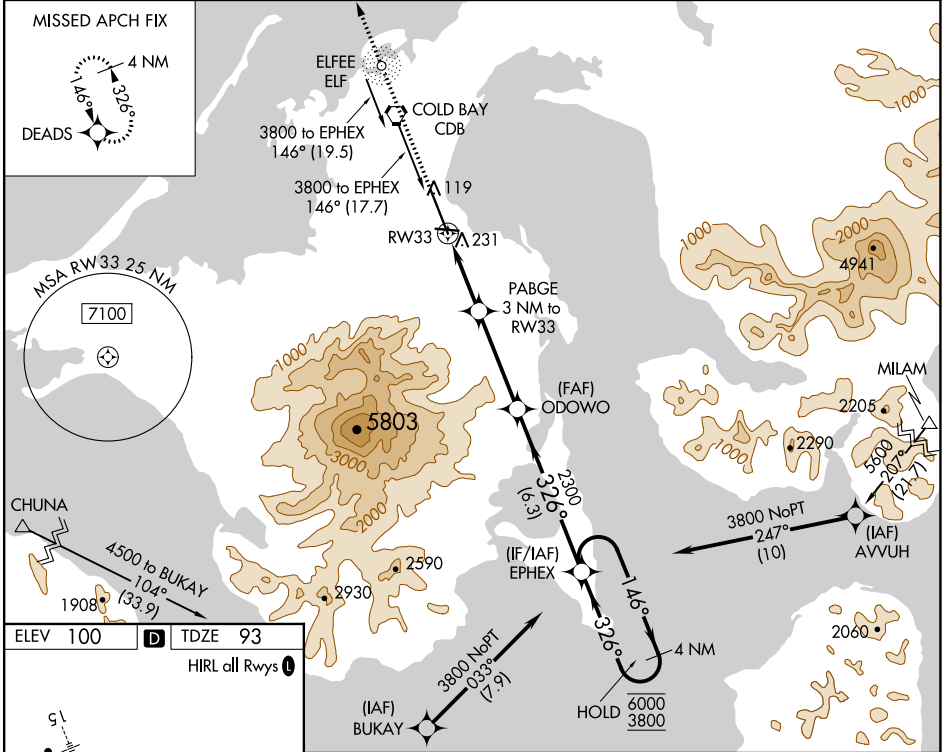
COLD BAY (CDB) (PACD)

RNP APCH.

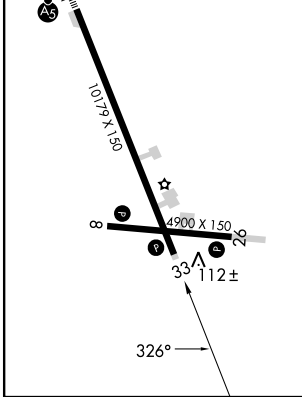
⚠ For uncompensated Baro-VNAV systems, LNAV/VNAV NA below -10°C or above 54°C. Circling NA for Cat A southwest of Rwy 15-33 at night. Circling NA for Cat B/C/D southwest of Rwy 15-33.

MISSED APPROACH: Climb to 3000 direct DEADS and hold.

ASOS 135.75	ANCHORAGE CENTER 118.5 278.3	COLD BAY RADIO 123.6 (CTAF) 0
-----------------------	--	---



ELEV 100	D	TDZE 93
HIRL all Rwy's		



3000	DEADS	VGSI and RNAV glidepath not coincident (VGSI Angle 3.00/TCH 36).	EPHEX	4 NM Holding Pattern
			ODOWO	
			PABGE 3 NM to RW33	146° → 6000
			RW33	← 326° 3800
			1100*	GP 3.00°
			2300	TCH 55
			1.2 NM	1.8 NM
			3.8 NM	6.3 NM

CATEGORY	A	B	C	D
LPV DA		293-3/4	200 (200-3/4)	
LNAV/VNAV DA		392-7/8	299 (300-7/8)	
LNAV MDA	500-1	407 (400-1)	500-1 1/8	407 (400-1 1/8)
C CIRCLING	540-1 440 (500-1)	560-1 460 (500-1)	560-1 1/2 460 (500-1 1/2)	860-2 1/2 760 (800-2 1/2)

AK, 26 DEC 2024 to 20 FEB 2025

AK, 26 DEC 2024 to 20 FEB 2025