

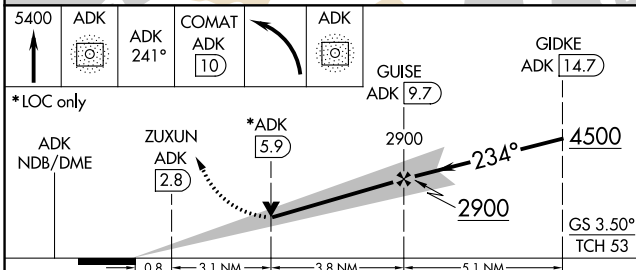
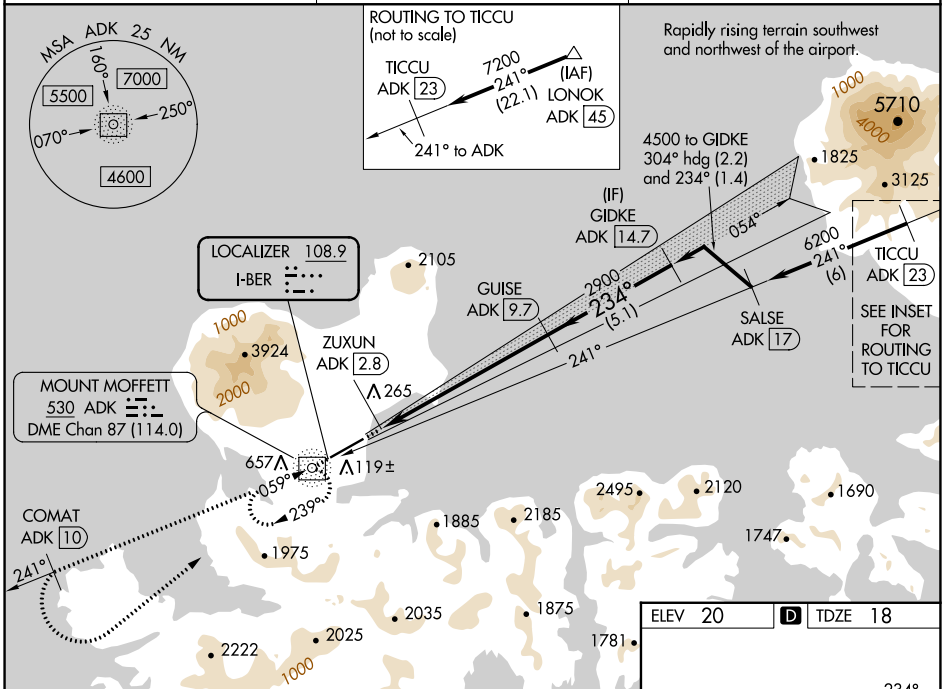
LOC I-BER	APP CRS	Rwy ldg	6190
108.9	234°	TDZE	18
		Apt Elev	20

ILS Y or LOC Y RWY 23

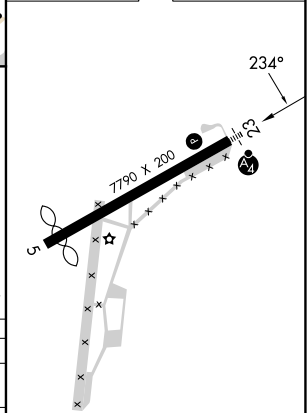
ADAK (ADK) (PADK)

ADF and DME required.		MALS	MISSED APPROACH: Climb to 5400 direct ADK NDB/DME and on the 241° bearing from ADK NDB/DME to COMAT/ADK 10 DME and left turn direct ADK NDB/DME and hold.
<p>▼ Circling NA at night. Circling NA northwest of Rwy 5-23.</p> <p>▲ Rwy 23 helicopter visibility reduction below 3/4 SM NA. DME from ADK NDB/DME. Simultaneous reception of I-BER and ADK DME required. Cat E for USAF/USN use only.</p>			

AWOS-3P 134.5	ANCHORAGE CENTER 126.4 254.3	CTAF 122.9 0
-------------------------	----------------------------------------	------------------------



ELEV 20	D	TDZE 18
---------	---	---------



CATEGORY	A	B	C	D	E
S-ILS 23	1572-5 1554 (1600-5)				
S-LOC 23	1520-1 1/4 1502 (1500-1 1/2)	1520-1 1/2 1502 (1500-1 1/2)	1520-3 1502 (1500-3)		
CIRCLING	1520-1 1/4 1500 (1500-1 1/2)	1520-1 1/2 1500 (1500-1 1/2)	1520-3 1500 (1500-3)	2400-3 2380 (2400-3)	2440-3 2420 (2500-3)

REIL Rwy 23 0

HIRL Rwy 5-23 0

AK, 26 DEC 2024 to 20 FEB 2025

AK, 26 DEC 2024 to 20 FEB 2025