

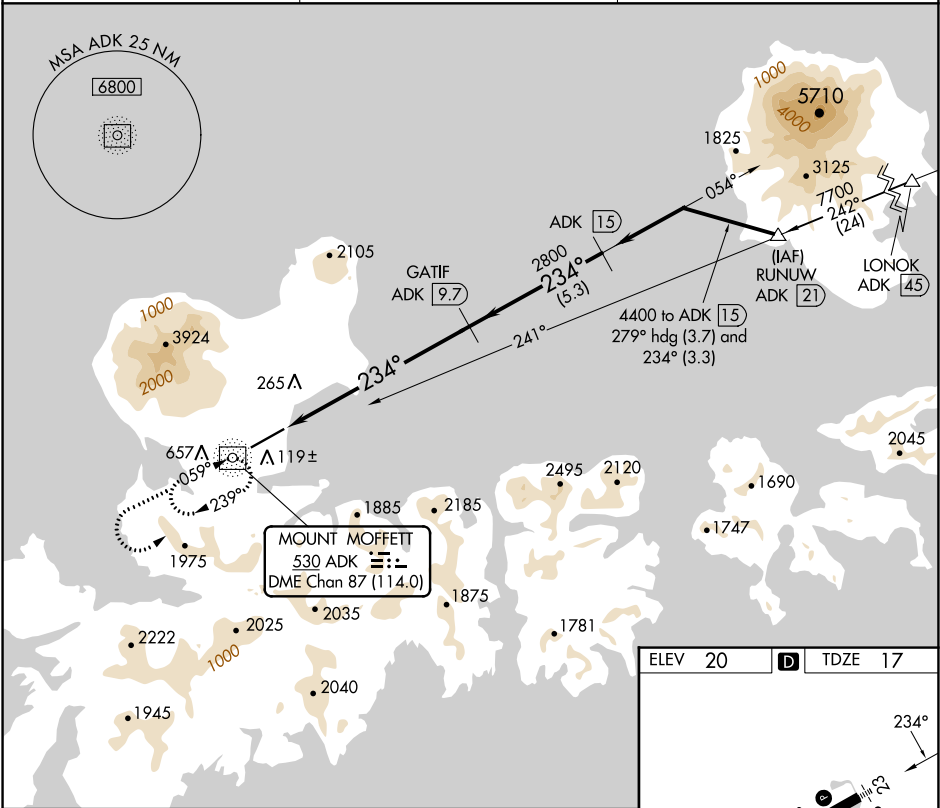
NDB/DME ADK 530	APP CRS 234°	Rwy ldg 6190
Chan 87 (114.0)		TDZE 17
		Apt Elev 20

NDB/DME RWY 23

ADAK (ADK)(PADK)

	MALS	MISSED APPROACH: Climb to 5000 via direct ADK NDB/DME and ADK NDB/DME 234° bearing, then climbing left turn to 9000 direct ADK NDB/DME and hold.

AWOS-3P 134.5	ANCHORAGE CENTER 126.4 254.3	CTAF 122.9
-------------------------	--	----------------------



AK, 26 DEC 2024 to 20 FEB 2025

AK, 26 DEC 2024 to 20 FEB 2025

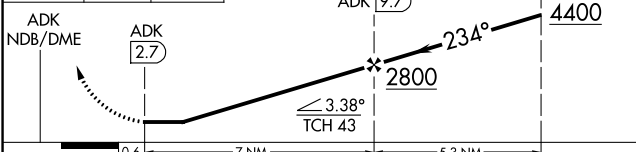
5000
↑
ADK 234°

9000

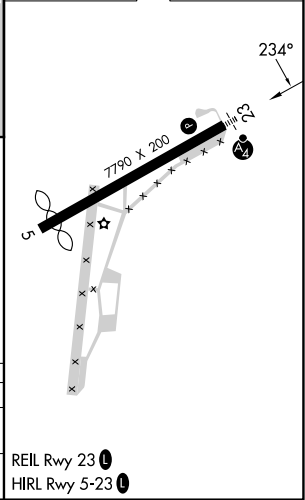
ADK

VGSI and descent angles not coincident (VGSI Angle 3.50/TCH 53).

ADK 15



ELEV 20	D	TDZE 17
---------	----------	---------



CATEGORY	A	B	C	D
S-23	1600/60 1583 (1600-1¼)	1600-1½ 1583 (1600-1½)	1600-3	1583 (1600-3)
CIRCLING	1600-1¼ 1580 (1600-1¼)	1600-1½ 1580 (1600-1½)	1600-3 1580 (1600-3)	2540-3 2520 (3000-3)

ADAK (ADK)(PADK) NDB/DME RWY 23