

ILS or LOC/DME RWY 28

LOC I-SYA 110.1	APCH CRS 287°	Rwy Idg 10,004 TDZE 93 Arprt Elev 98
---------------------------	-------------------------	---

[USAF]

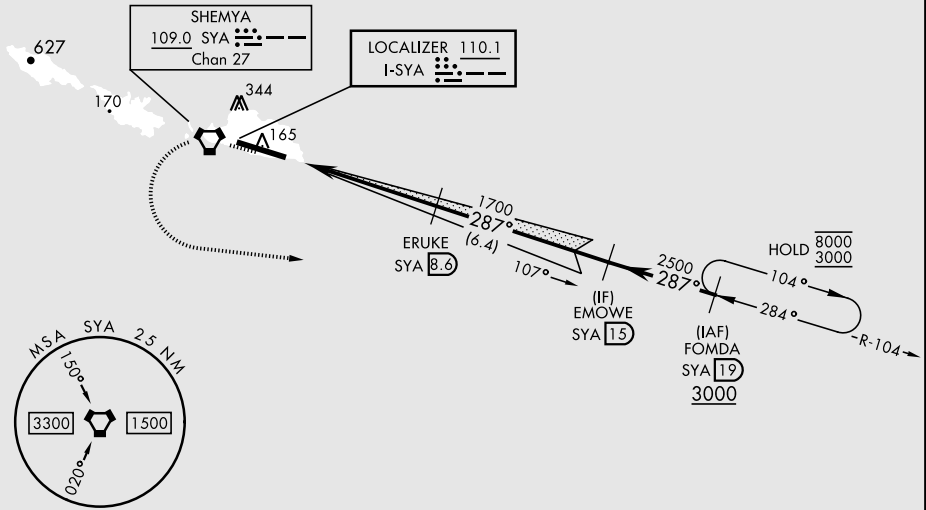
EARECKSON AS (PASY)

* Circling not authorized N of Rwy 10-28. SALS  MISSED APPROACH: Climb to 600, then climbing left turn to 3000 direct FOMDA and hold.

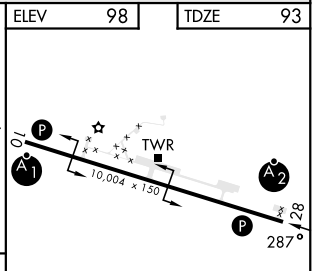
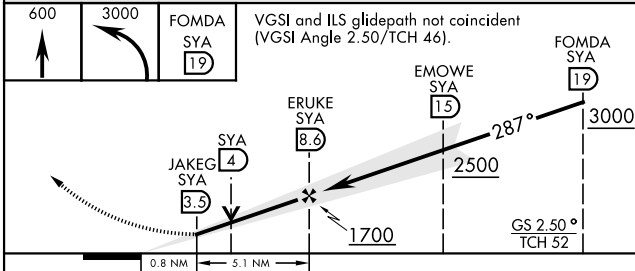
ANCHORAGE CENTER
119.1 339.8

CTAF
127.2 352.05


CAUTION: Numerous obstructions in area N of Rwy 10-28.
Missed approach requires use of RNAV or ATC RADAR monitoring.



EMERG SAFE ALT 100 NM 5400



CATEGORY	A	B	C	D	E
S-ILS 28		293-1	200	(200-1)	
S-LOC 28		460-1	367	(400-1)	
CIRCLING*	460-1 362 (400-1)	560-1 462 (500-1)	560-1 1/2 465 (500-1 1/2)	660-2 562 (600-2)	680-2 582 (600-2)

ELEV 98 TDZE 93
HIRL Rwy 10-28 
REIL Rwy 10 and 28

ILS or LOC/DME RWY 28

AK, 26 DEC 2024 to 20 FEB 2025

AK, 26 DEC 2024 to 20 FEB 2025