

SHEMYA I, ALEUTIAN I, ALASKA

RNAV (GPS) RWY 10

APCH CRS	Rwy Idg 10,004
107°	TDZE 98
	Arpt Elev 98

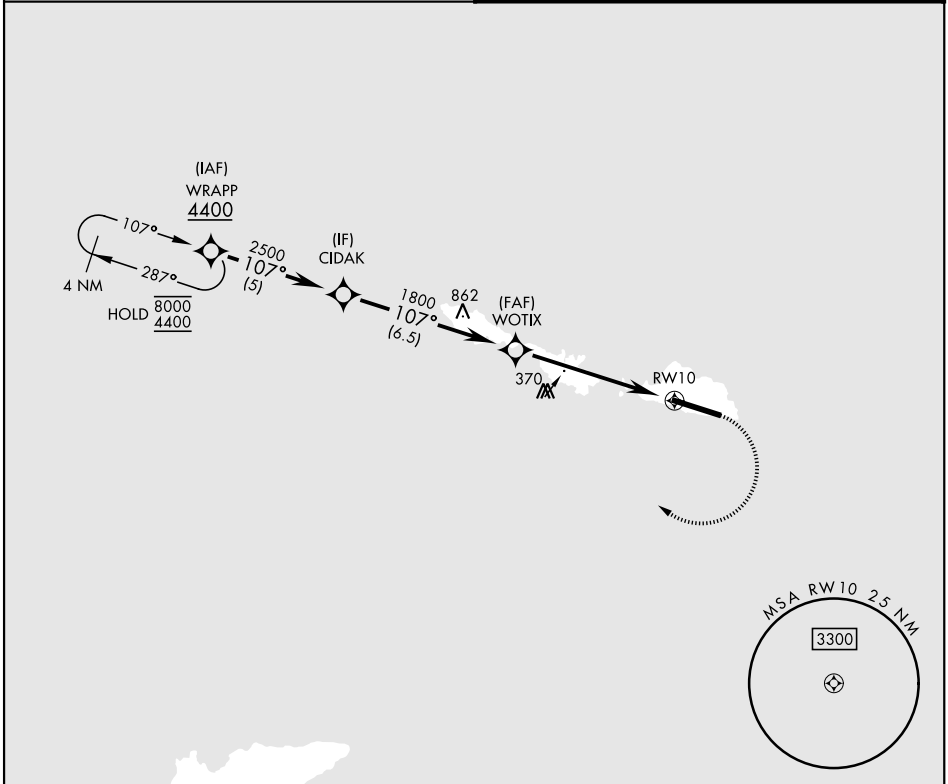
[USAF]

EARECKSON AS (PASY)

RNP APCH - GFS	ALSF-1	MISSED APPROACH: Climbing right turn to 4400 direct WRAPP and hold, continue climb-in-hold to 4400.
*When ALS inop, increase CAT CDE vis to 1½ miles. **Circling not authorized N of Rwy 10-28.		

ANCHORAGE CENTER
119.1 339.8

CTAF
127.2 352.05

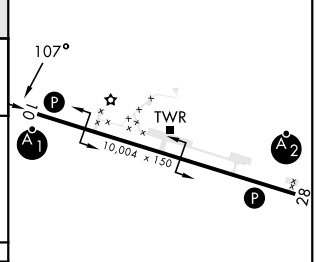
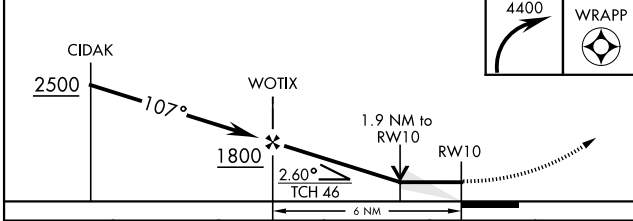


AK, 26 DEC 2024 to 20 FEB 2025

AK, 26 DEC 2024 to 20 FEB 2025

2280
EMERG SAFE ALT 100 NM 5400

ELEV	98	TDZE	98
------	----	------	----



CATEGORY	A	B	C	D	E
LNAV MDA *	640-1	542 (600-1)	640-1½	542 (600-1½)	
CIRCLING **	640-1	542 (600-1)	640-1½	660-2	680-2
			542 (600-1½)	562 (600-2)	582 (600-2)

HIRL Rwy 10-28
REIL Rwy 10 and 28

SHEMYA I, ALEUTIAN I, ALASKA

52° 43' N-174° 07' E

EARECKSON AS (PASY)

Amdt 1 05SEP24

RNAV (GPS) RWY 10