

# RNAV (GPS) RWY 28

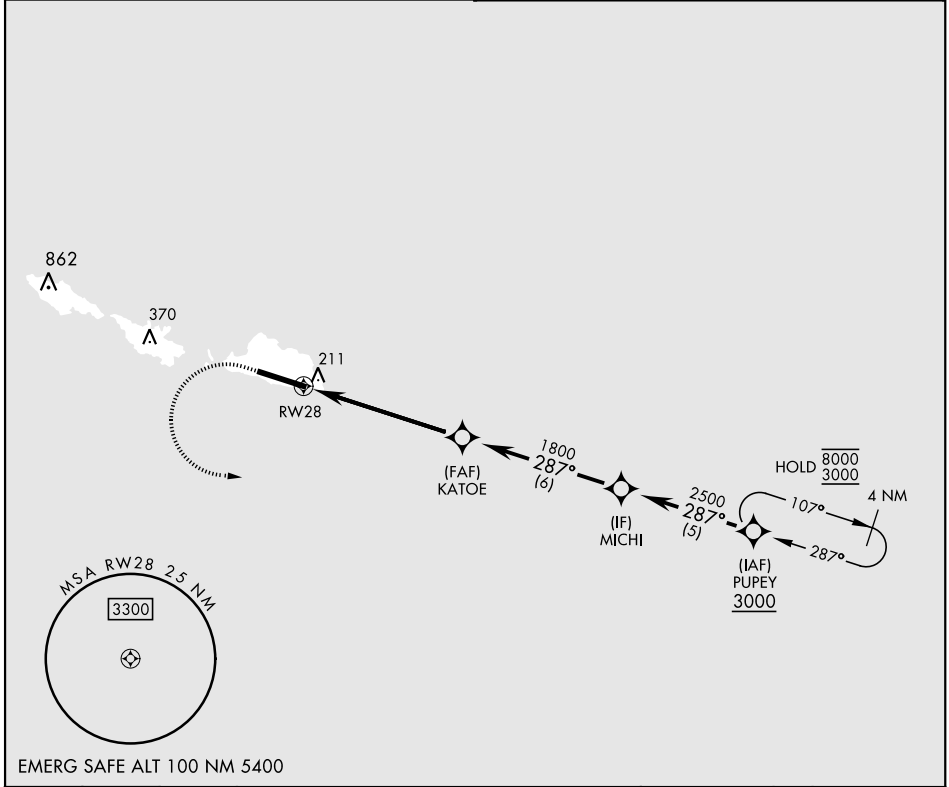
APCH CRS	Rwy Idg <b>10,004</b>
<b>287°</b>	TDZE <b>93</b>
	Arprt Elev <b>98</b>

[USAF]

EARECKSON AS (PASY)

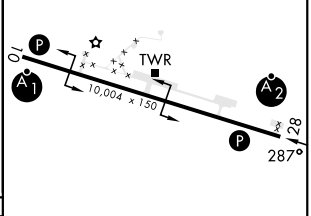
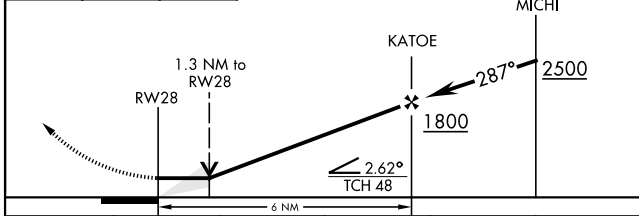
RNP APCH - GPS	SALS	MISSED APPROACH: Climb to 600, then climbing left turn to 3000, direct PUPEY and hold.
* When ALS inop, increase CAT CDE vis to 1 1/2 miles. ** Circling not authorized N of Rwy 10-28.		

ANCHORAGE CENTER <b>119.1 339.8</b>	CTAF <b>127.2 0 352.05 0</b>
--	---------------------------------



EMERG SAFE ALT 100 NM 5400

600	3000	PUPEY	ELEV 98	TDZE 93



CATEGORY	A	B	C	D	E	
LNAV MDA*	480-1		387	(400-1)		
CIRCLING**	480-1 382 (400-1)	560-1 462 (500-1)	560-1 1/2 462 (500-1 1/2)	660-2 562 (600-2)	680-2 582 (600-2)	HIRL Rwy 10-28 REIL Rwy 10 and 28

# RNAV (GPS) RWY 28

AK, 26 DEC 2024 to 20 FEB 2025

AK, 26 DEC 2024 to 20 FEB 2025