

SHEMYA I, ALEUTIAN I, ALASKA

VOR/DME or TACAN RWY 10

VORTAC SYA 109.0 Chan 27	APCH CRS 092°	Rwy ldg 10,004 TDZE 98 Arprt Elev 98
--	-------------------------	---

[USAF]

EARECKSON AS (PASY)

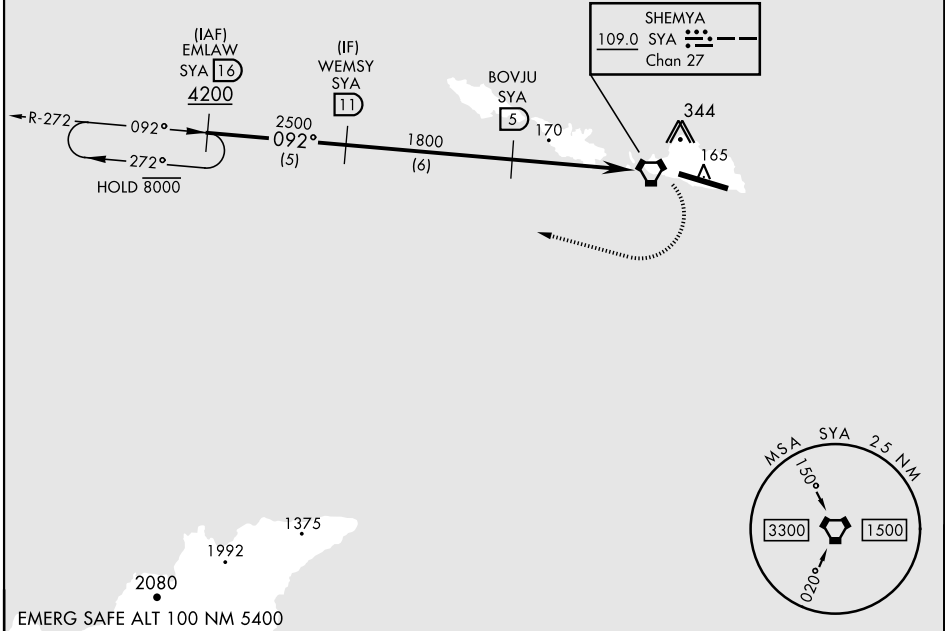
* When ALS inop, increase CAT AB vis to 1½ miles;
CAT CDE vis to 1¼ miles.
** Circling not authorized N of Rwy 10-28.



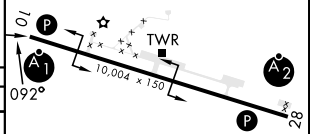
MISSED APPROACH: Climb to 1200, then climbing right turn to 4200, intercept SYA R-272 direct EMLAW and hold.

ANCHORAGE CENTER 119.1 339.8	CTAF 127.2 352.05 0
--	-------------------------------

CAUTION: Numerous obstructions in area N of Rwy 10-28.
Missed approach requires use of RNAV or ATC RADAR monitoring.



WEMSY SYA 11	BOVJU SYA 5	SYA ELVEK SYA 0.3	SYA VORTAC 0.1	EMLAW R-272 16	ELEV 98	TDZE 98
2500	1800	1200	4200			
092°		2.56°				
4.9 NM		1.2 NM				
CATEGORY	A	B	C	D	E	
S-10 *	640-1	542 (600-1)	640-1½	542 (600-1½)		
CIRCLING **	640-1½	542 (600-1½)	640-1¾	562 (600-2)	582 (600-2)	HIRL Rwy 10-28 REIL Rwy 10 and 28



SHEMYA I, ALEUTIAN I, ALASKA

52°43'N-174°07'E

EARECKSON AS (PASY)

Amdt 7 05SEP24

VOR/DME or TACAN RWY 10

AK, 26 DEC 2024 to 20 FEB 2025

AK, 26 DEC 2024 to 20 FEB 2025