

NDB/DME ILI 411	APP CRS 006°	Rwy Idg 4800 TDZE 179 Apt Elev 192
Chan 91 (114.4)		

NDB RWY 36

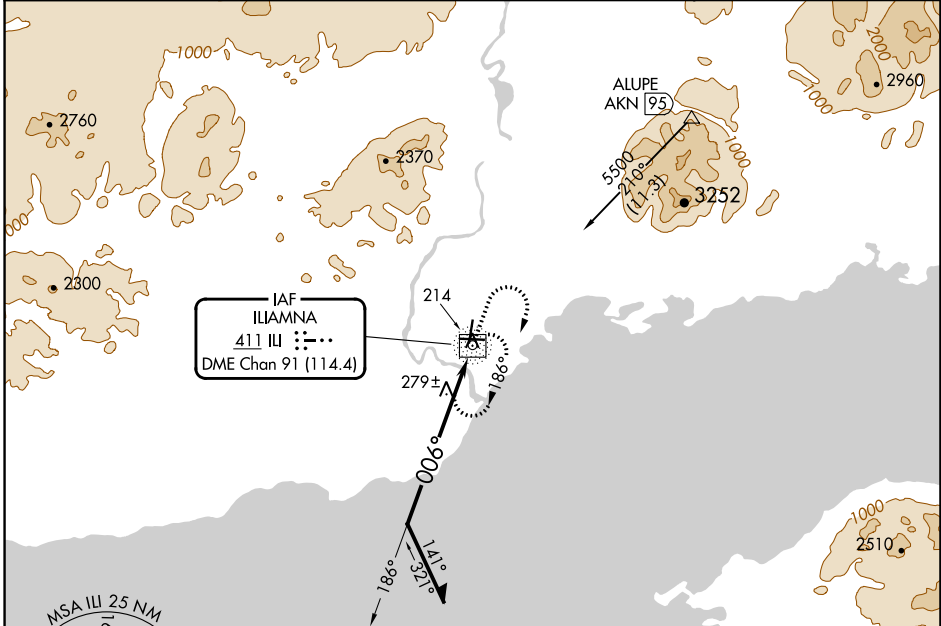
ILIAMNA (ILI) (PAIL)

⚠ Circling Rwy 18 NA at night. Rwy 36 helicopter visibility reduction below ¾ SM NA. Circling NA to waterways N, S, E, W.

❄ -26°C

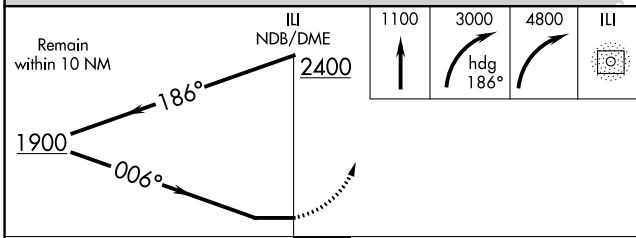
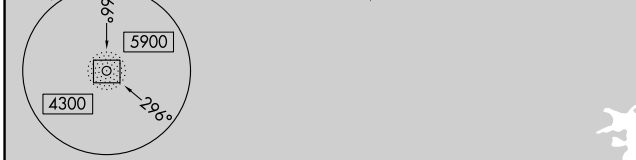
MISSED APPROACH: Climb to 1100 then climbing right turn to 3000 via heading 186° then climbing right turn to 4800 direct ILI NDB/DME and hold, continue climb-in-hold to 4800.

AFIS 134.95	ANCHORAGE CENTER 118.8	ILIAMNA RADIO 123.6 (CTAF) 0
-----------------------	----------------------------------	--



AK, 26 DEC 2024 to 20 FEB 2025

AK, 26 DEC 2024 to 20 FEB 2025



ELEV 192	TDZE 179
----------	----------

REIL Rwys 26 and 36
MIRL Rwys 8-26 and 18-36

Diagram of runway layout showing RWY 36, RWY 81, and water runways. Dimensions: 4800 x 100, 100 x 100, 5086 x 100. Slope: -0.9% UP.

WATER RWYS:
N-S 2892 X 400
E-W 2998 X 400

CATEGORY	A	B	C	D
S-36	680-1	501 (500-1)	680-1½	501 (500-1½)
C CIRCLING	740-1	548 (600-1)	820-1¾ 628 (700-1¾)	1700-3 1508 (1600-3)