

WAAS CH 82110 W36A	APP CRS 355°	Rwy Idg 4800 TDZE 179 Apt Elev 192
--	------------------------	---

RNAV (GPS) RWY 36

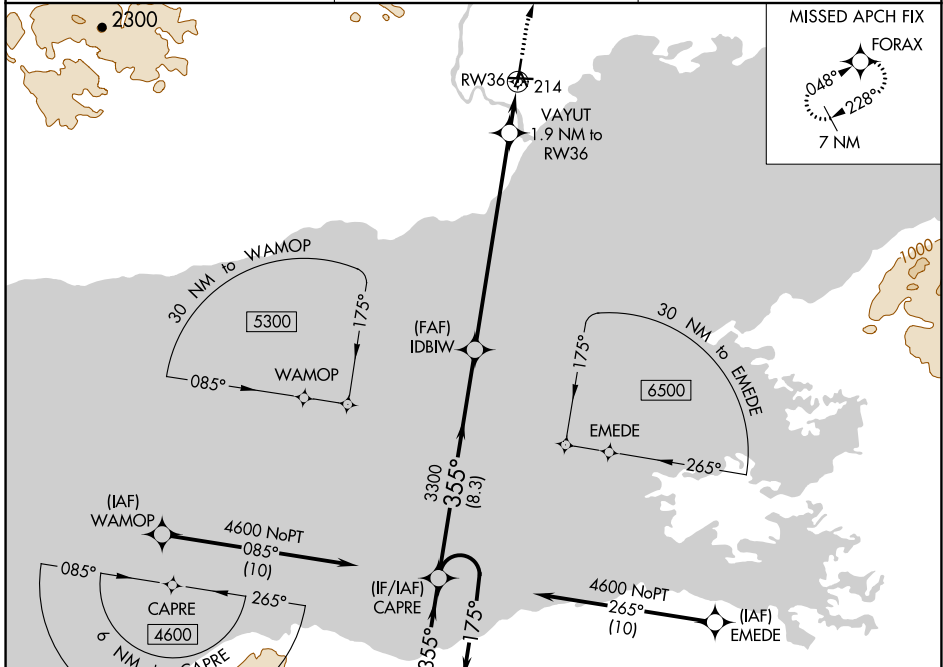
ILIAMNA (ILI) (PAIL)

RNP APCH - GPS.

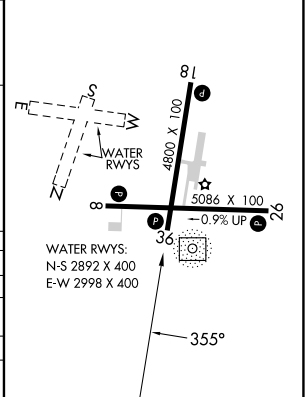
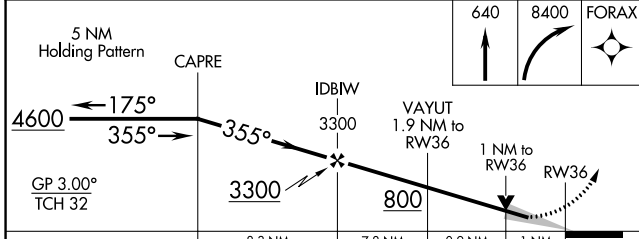
⚠ For uncompensated Baro-VNAV systems, procedure NA below -21°C or above 54°C. When local altimeter setting not received, **⚠** -26°C procedure NA. Circling NA to waterways N, S, E, W.

MISSED APPROACH: Climb to 640 then climbing right turn to 8400 direct FORAX and hold, continue climb-in-hold to 8400.

AFIS 134.95	ANCHORAGE CENTER 118.8	ILIAMNA RADIO 123.6 (CTAF) 📻
-----------------------	----------------------------------	---



ELEV 192	TDZE 179
REIL Rwy 26 and 36 📻	
MIRL Rwy 8-26 and 18-36 📻	



CATEGORY	A	B	C	D
LPV DA		429-1	250 (300-1)	
LNAV/VNAV DA		462-1	283 (300-1)	
LNAV MDA		540-1	361 (400-1)	
📻 CIRCLING	740-1	548 (600-1)	820-1 ^{3/4} 628 (700-1 ^{3/4})	1700-3 1508 (1600-3)

AK, 26 DEC 2024 to 20 FEB 2025

AK, 26 DEC 2024 to 20 FEB 2025