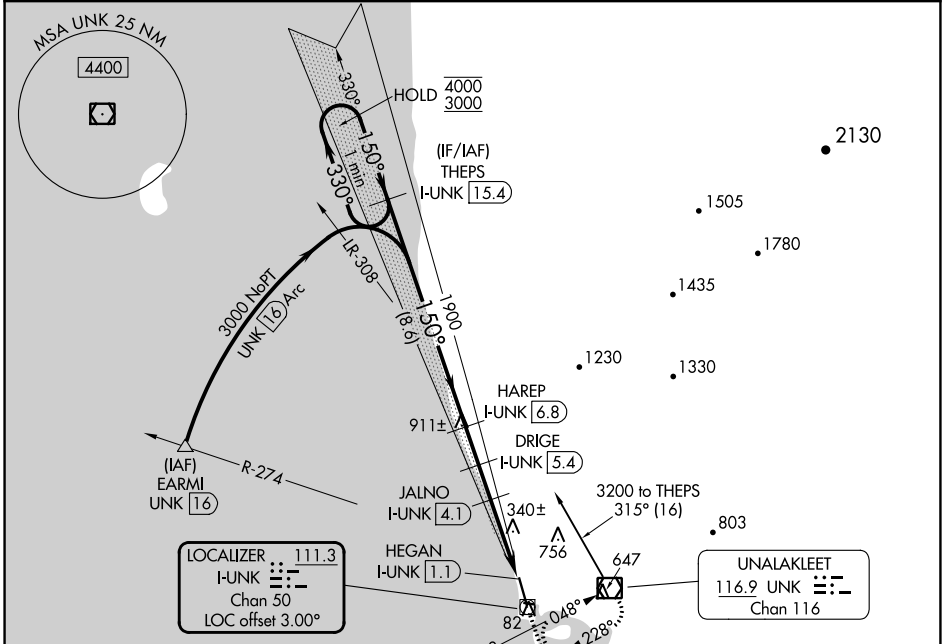


LOC/DME I-UNK <b>111.3</b> Chan 50	APP CRS <b>150°</b>	Rwy Idg <b>5900</b> TDZE <b>27</b> Apt Elev <b>27</b>
--	------------------------	---

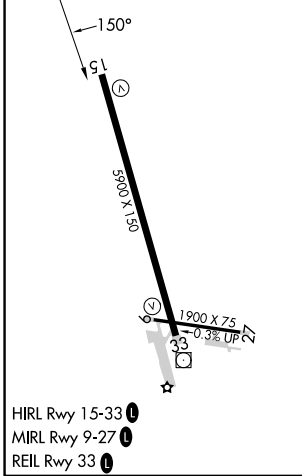
# LOC RWY 15

UNALAKLEET (UNK)(PAUN)

DME required.		MISSED APPROACH: Climb to 1900 then climbing right turn to 3400 direct UNK VOR/DME and hold, continue climb-in-hold to 3400.	
AWOS-3P <b>132.25</b>	ANCHORAGE CENTER <b>135.7 335.5</b>	NOME RADIO <b>122.3</b>	CTAF <b>123.0</b>



ELEV 27	TDZE 27
---------	---------



Procedure NA for arrivals at UNK VOR/DME on V440 eastbound.

	THEPS I-UNK 15.4	HAREP I-UNK 6.8	DRIGE I-UNK 5.4	JALNO I-UNK 4.1	I-UNK 2.5	HEGAN I-UNK 1.1
Use I-UNK DME when on the localizer course.						
One Minute Holding Pattern	4000 ← 330°	3000 → 150°	1900 → 150°	1440 → 30.1°	1020 → 30.1°	
	8.6 NM	1.4 NM	1.3 NM	1.6 NM	1.4 NM	
CATEGORY	A	B	C	D		
S-LOC 15	520-1	493 (500-1)	520-1 $\frac{3}{8}$	493 (500-1 $\frac{3}{8}$ )		
<input checked="" type="checkbox"/> CIRCLING	600-1 573 (600-1)	700-1 673 (700-1)	700-2 673 (700-2)	900-2 $\frac{3}{4}$ 873 (900-2 $\frac{3}{4}$ )		

AK, 26 DEC 2024 to 20 FEB 2025

AK, 26 DEC 2024 to 20 FEB 2025