

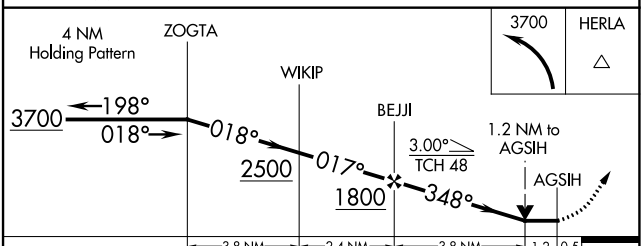
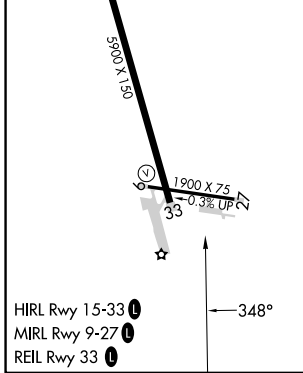
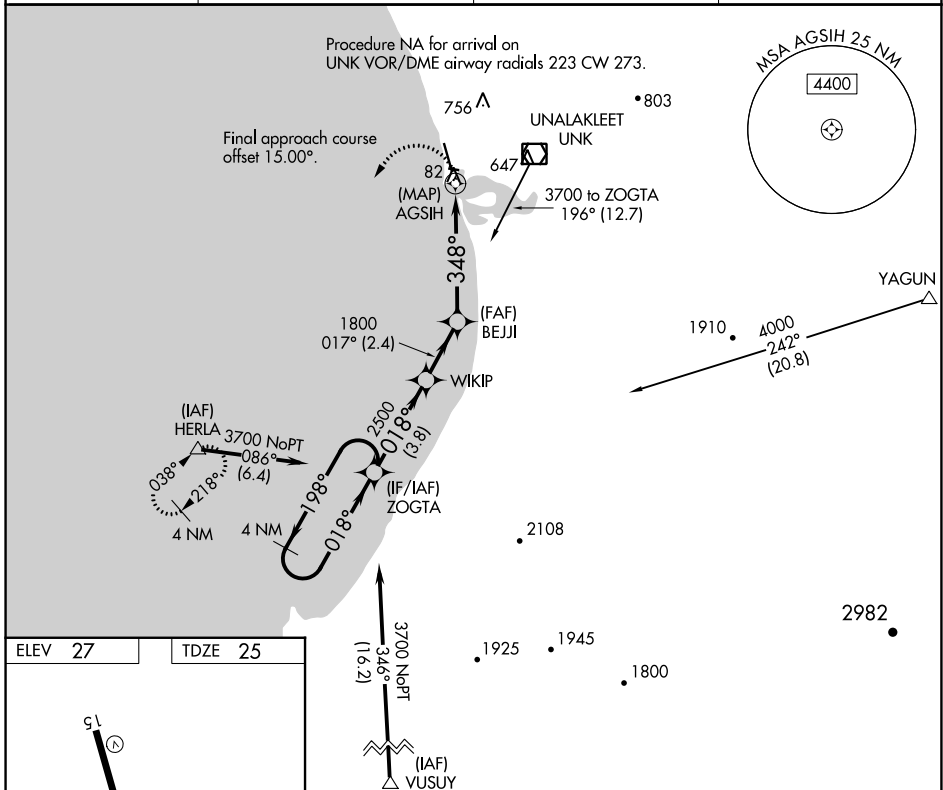
APP CRS 348°	Rwy Idg TDZE Apt Elev	5900 25 27
------------------------	-----------------------------	---------------------------------------

RNAV (GPS) RWY 33

UNALAKLEET (UNK)(PAUN)

<p>▼ Circling NA east of Rwy 15-33. Circling Rwy 9 NA at night. ▲ Rwy 33 helicopter visibility reduction below 3/4 SM NA. DME/DME RNP-0.3 NA.</p>	<p>MISSED APPROACH: Climbing left turn to 3700 direct HERLA and hold, continue climb-in-hold to 3700.</p>
---	--

AWOS-3P 132.25	ANCHORAGE CENTER 135.7 335.5	NOME RADIO 122.3	CTAF 123.0
--------------------------	--	----------------------------	----------------------



CATEGORY	A	B	C	D
LNAV MDA	600-1	575 (600-1)	600-1½	575 (600-1½)
C CIRCLING	600-1 573 (600-1)	700-1 673 (700-1)	700-2 673 (700-2)	860-2¾ 833 (900-2¾)

AK, 26 DEC 2024 to 20 FEB 2025

AK, 26 DEC 2024 to 20 FEB 2025