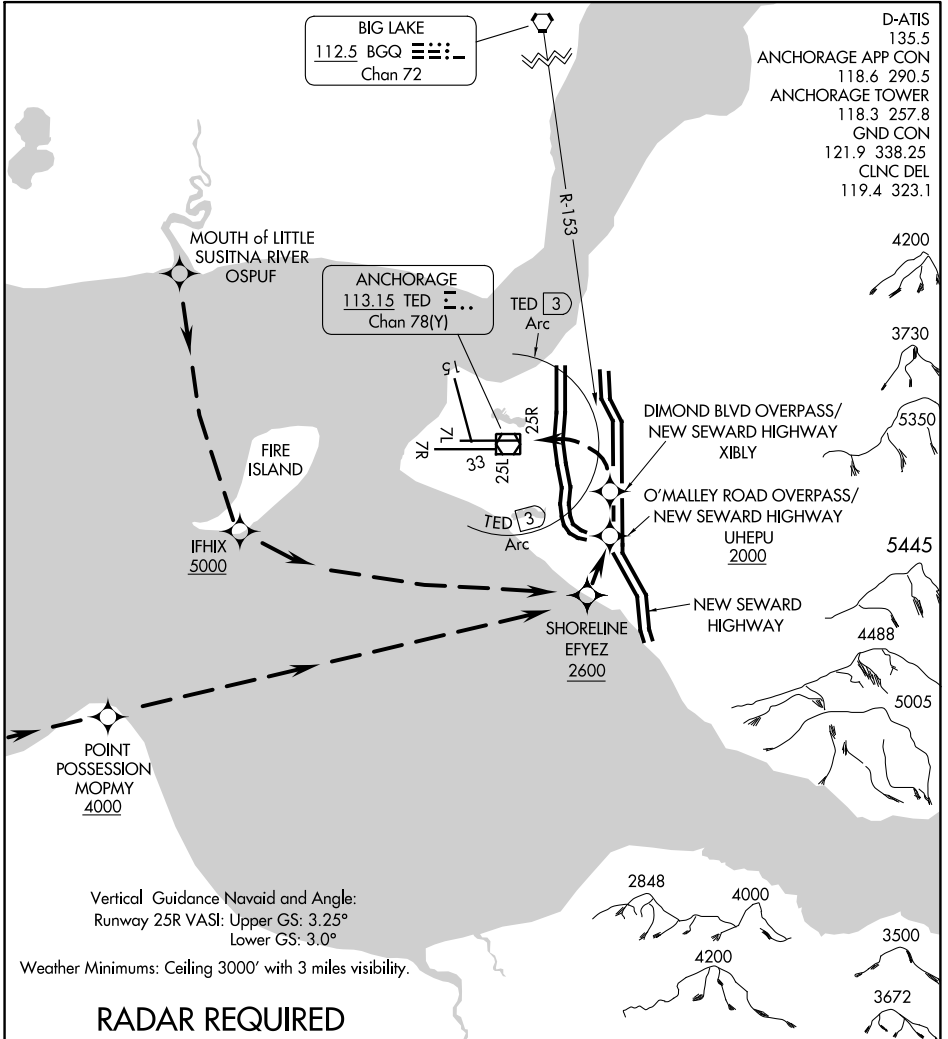


HIGHWAY VISUAL RWY 25R

TED STEVENS ANCHORAGE INTL (ANC) (PANC)
AL-1500 (FAA) ANCHORAGE, ALASKA



AK, 26 DEC 2024 to 20 FEB 2025

AK, 26 DEC 2024 to 20 FEB 2025

RADAR REQUIRED

HIGHWAY VISUAL RWY 25R
PROCEDURE NOT AUTHORIZED AT NIGHT

HIGHWAY VISUAL RWY 25R

61°10'N-150°00'W ANCHORAGE, ALASKA