

APP CRS	Rwy Idg	10400
329°	TDZE	121
	Apt Elev	151

RNAV (RNP) RWY 33

TED STEVENS ANCHORAGE INTL (ANC) (PANC)

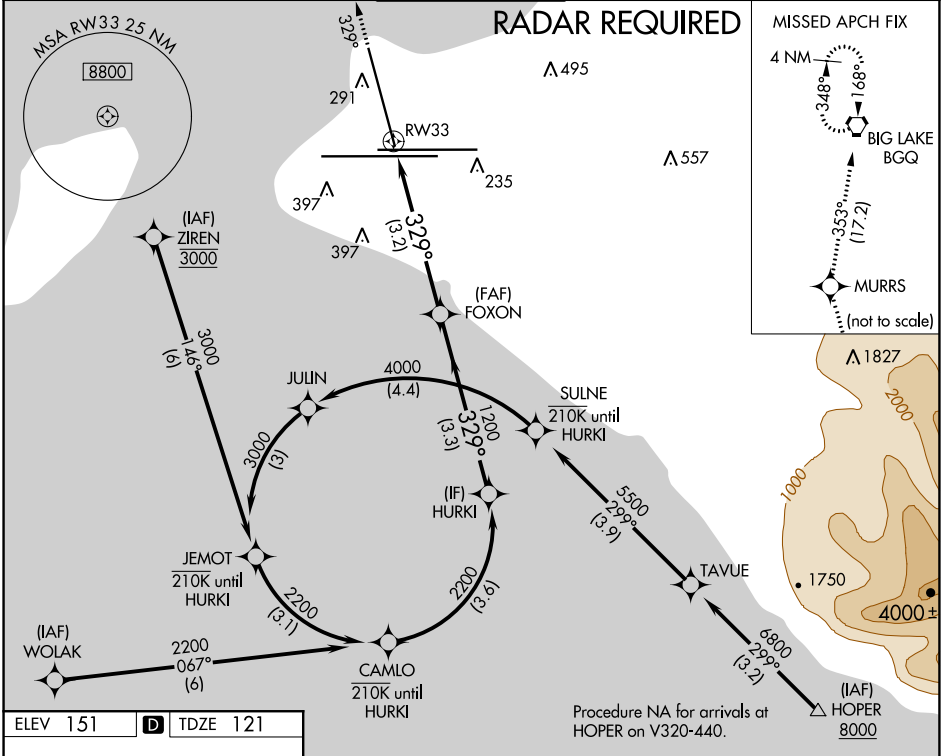
RNP AR APCH. RF required.

▼ For uncompensated Baro-VNAV systems, procedure NA below -17°C or above 54°C.

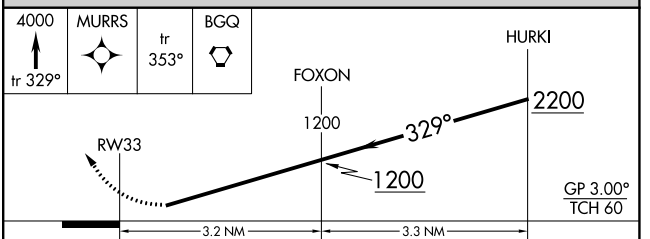
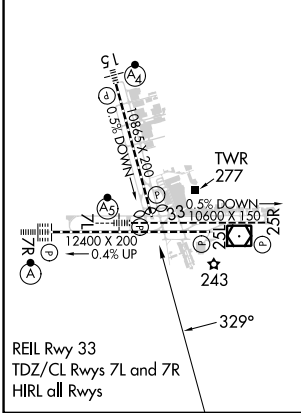
❄ -21°C

MISSED APPROACH: Climb to 4000 on the RNAV missed approach route to BGQ VORTAC and hold.

D-ATIS 135.5	ANCHORAGE APP CON 118.6 290.5	ANCHORAGE TOWER 118.3 257.8	GND CON 121.9 338.25	CLNC DEL 119.4 323.1
------------------------	---	---------------------------------------	--------------------------------	--------------------------------



ELEV 151	D	TDZE 121
----------	----------	----------



CATEGORY	A	B	C	D
RNP 0.11 DA		463-1	342 (400-1)	
RNP 0.20 DA		525-1½	404 (400-1½)	
RNP 0.30 DA		687-1½	566 (600-1½)	

AUTHORIZATION REQUIRED

AK, 26 DEC 2024 to 20 FEB 2025

AK, 26 DEC 2024 to 20 FEB 2025