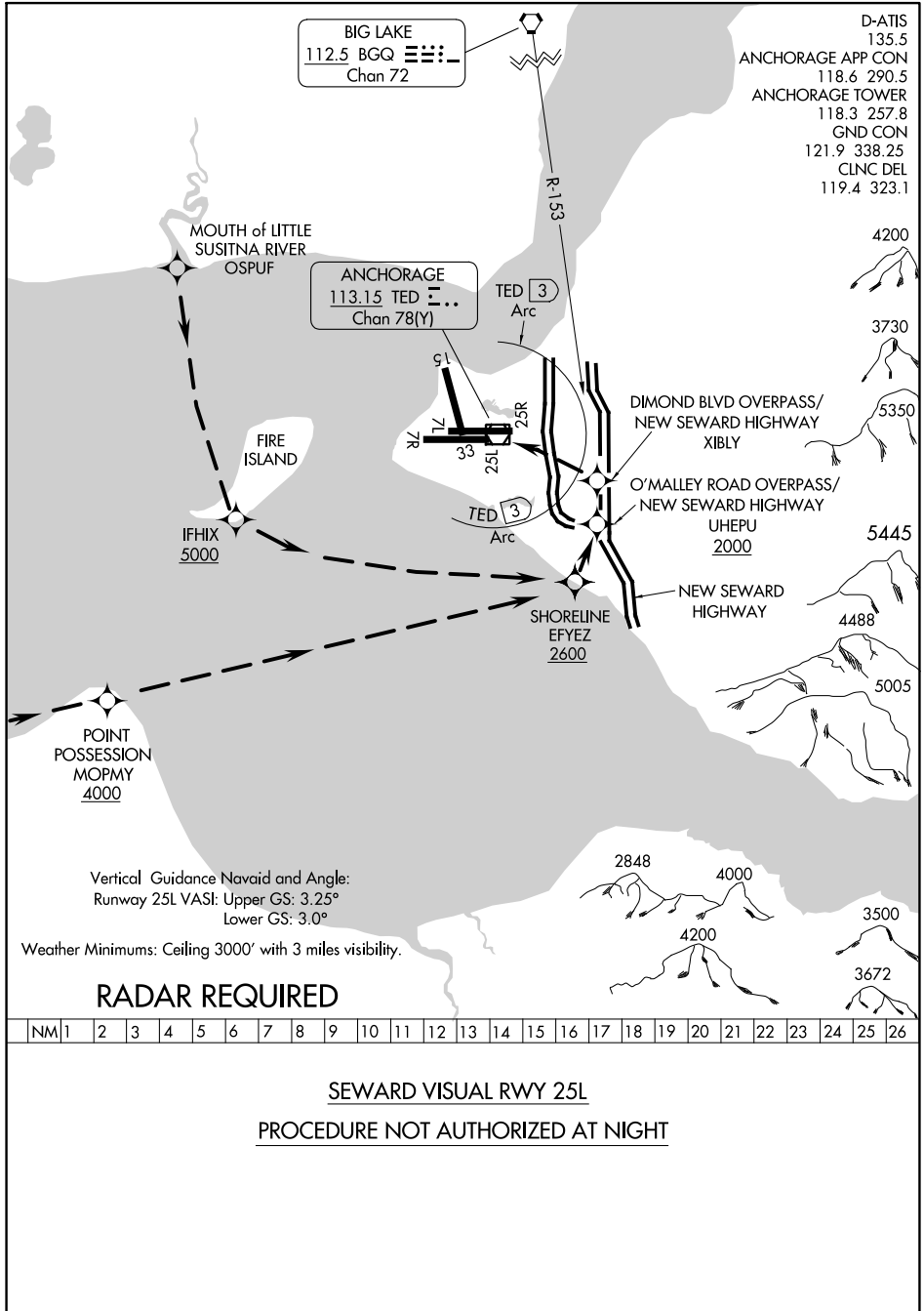


SEWARD VISUAL RWY 25L

TED STEVENS ANCHORAGE INTL (ANC) (PANC)
AL-1500 (FAA) ANCHORAGE, ALASKA



AK, 26 DEC 2024 to 20 FEB 2025

AK, 26 DEC 2024 to 20 FEB 2025

SEWARD VISUAL RWY 25L

61°10'N-150°00'W ANCHORAGE, ALASKA
TED STEVENS ANCHORAGE INTL (ANC) (PANC)