

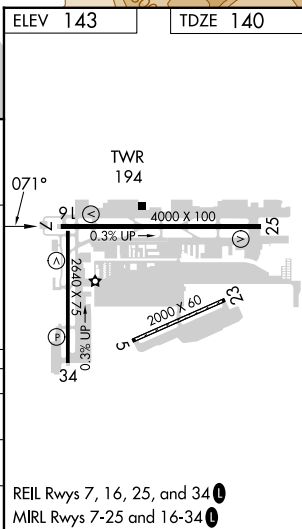
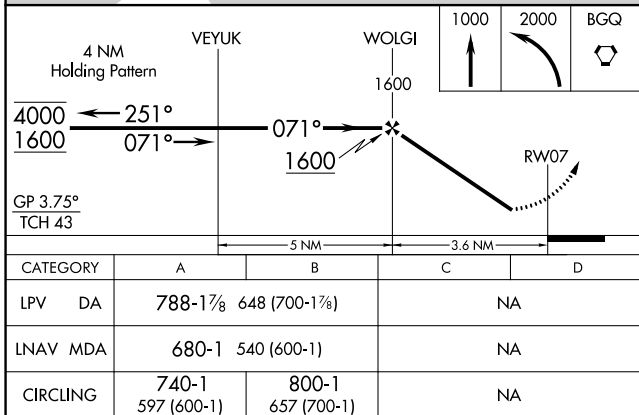
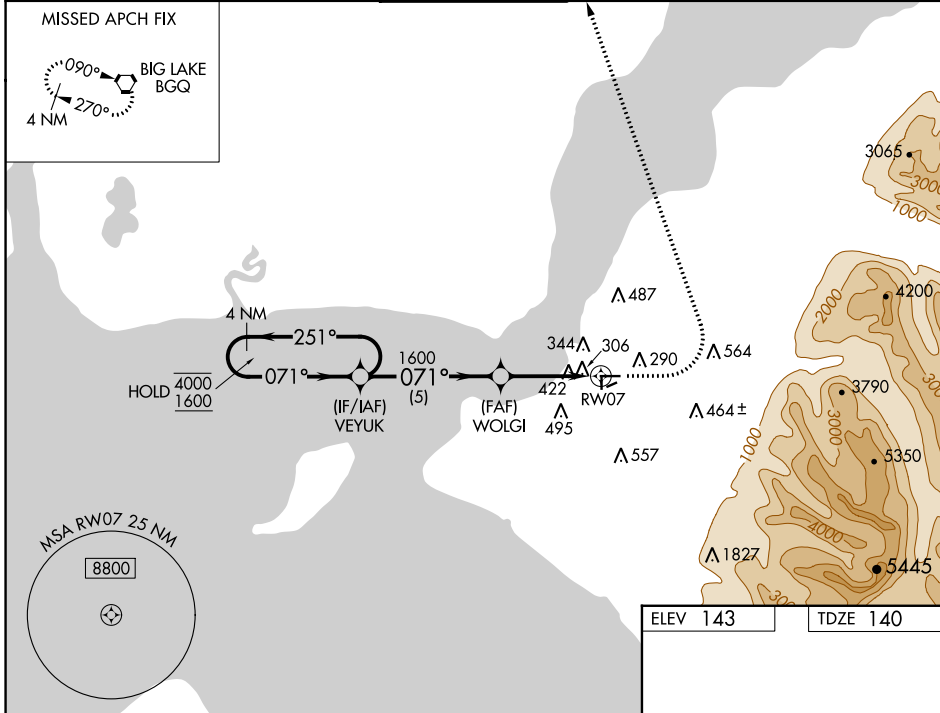
WAAS CH <b>67473</b> <b>W07B</b>	APP CRS <b>071°</b>	Rwy Idg <b>4000</b> TDZE <b>140</b> Apr Elev <b>143</b>
--	------------------------	---

# RNAV (GPS) Y RWY 7

MERRILL FLD (MRI) (PAMR)

RNP APCH - GPS.		MISSED APPROACH: Climb to 1000 then climbing left turn to 2000 direct BGQ VORTAC and hold.	
RADAR required for procedure entry.			
<p>⚠ When local altimeter setting not received, use Ted Stevens Anchorage Intl altimeter setting and increase LPV DA to 801 feet. Increase all MDAs 20 feet. Helicopter visibility reduction below 1 SM NA. Circling Rwy 16, 34, 5 and 23 NA at night.</p>			

ATIS <b>124.25</b>	ANCHORAGE APP CON <b>119.1 363.2</b>	MERRILL TOWER * <b>126.0 (CTAF) 0</b>	GND CON <b>121.7</b>	UNICOM <b>122.95</b>
-----------------------	---	--	-------------------------	-------------------------



AK, 26 DEC 2024 to 20 FEB 2025

AK, 26 DEC 2024 to 20 FEB 2025