

BOJAA FOUR DEPARTURE (BOJAA4.BOJAA)

EIELSON AFB (PAEI)

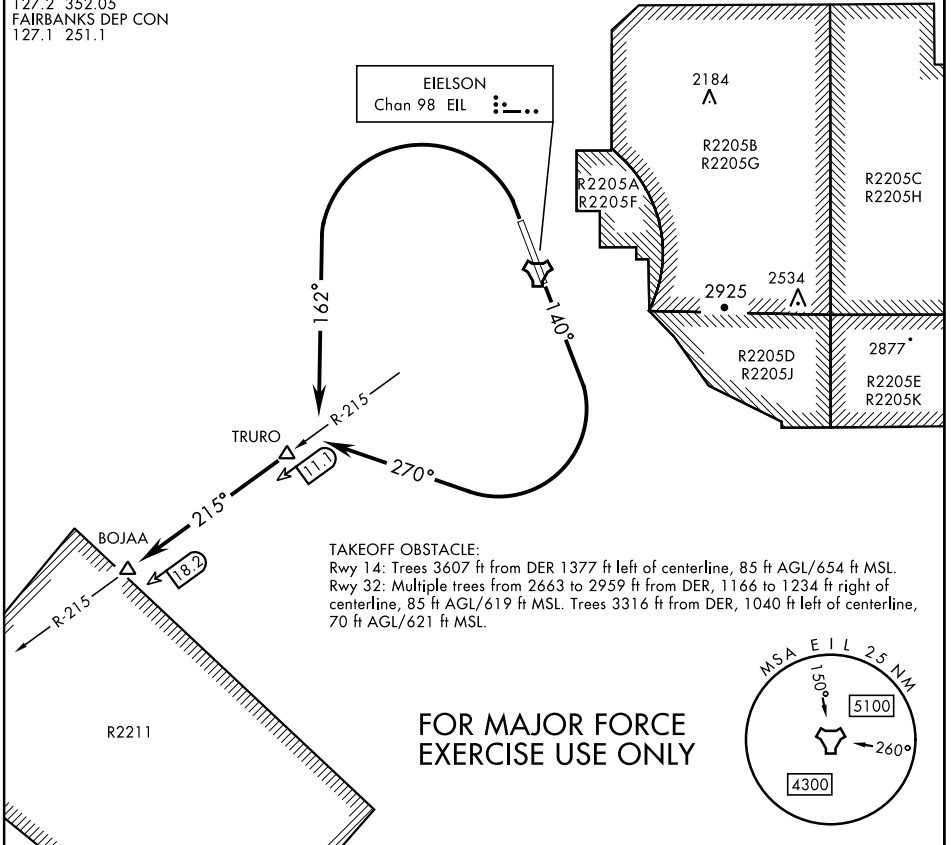
FAIRBANKS, ALASKA

RADAR required

[USAF]

ATIS ★ 119.9 273.5
 CLNC DEL
 343.7
 GND CON
 121.8 275.8
 TOWER ★
 127.2 352.05
 FAIRBANKS DEP CON
 127.1 251.1

EIELSON
 Chan 98 EIL



AK, 26 DEC 2024 to 20 FEB 2025

AK, 26 DEC 2024 to 20 FEB 2025

DEPARTURE ROUTE DESCRIPTION

TAKEOFF RWY 14: Climb heading 140° to 1100, then climbing right turn to heading 270°, intercept EIL TACAN R-215 outbound to BOJAA. Climb and maintain 3700 or assigned altitude.

TAKEOFF RWY 32: Climbing left turn to heading 162° to TRURO then continue outbound on EIL TACAN R-215 to BOJAA. Maintain at or above 3700 or assigned altitude.

BOJAA FOUR DEPARTURE (BOJAA4.BOJAA)

Orig 26DEC24

FAIRBANKS, ALASKA

EIELSON AFB (PAEI)