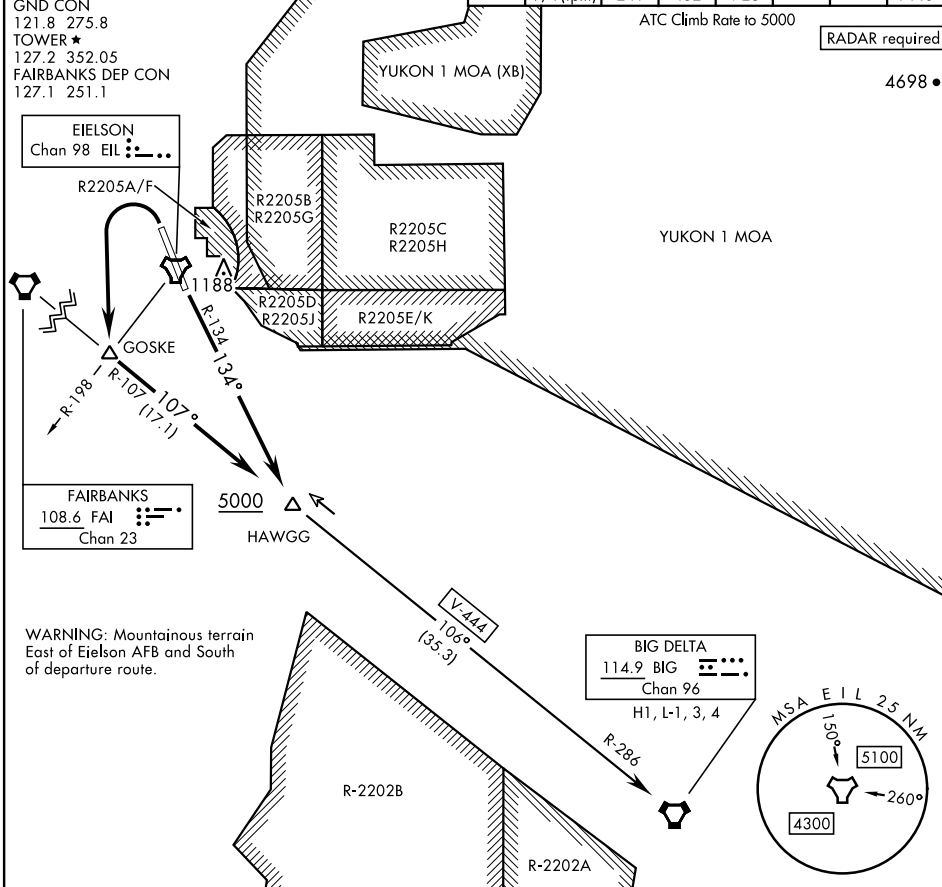


# HAWGG EIGHT DEPARTURE (HAWGG8•HAWGG)

EIELSON AFB (PAEI)

FAIRBANKS, ALASKA

ATIS ★ 119.9 273.5	AL-1729 [USAF]	YUKON 2 MOA	Rwy	Knots	60	120	180	240	300	360
CLINC DEL 343.7			32	V/V(fpm)	214	428	642	856	1070	1284
GND CON 121.8 275.8			14	V/V(fpm)	241	482	723	964	1205	1446



AK, 26 DEC 2024 to 20 FEB 2025

AK, 26 DEC 2024 to 20 FEB 2025

## DEPARTURE ROUTE DESCRIPTION

TAKEOFF RWY 14: Turn left to join EIL TACAN R-134 to FAI VORTAC R-107. Cross HAWGG at or above 5000. Thence...

TAKEOFF RWY 32: Turn left to GOSKE then continue outbound FAI VORTAC R-107 to HAWGG. Cross HAWGG at or above 5000. Thence...

...intercept V-444 to BIG VORTAC, then via assigned route.

# HAWGG EIGHT DEPARTURE (HAWGG8•HAWGG)

Orig 20APR23

FAIRBANKS, ALASKA

EIELSON AFB (PAEI)