

COPTER RNAV (GPS) 004°

APCH CRS 004°	Rwy Idg THRE Arprt Elev 5996 N/A 177
-------------------------	--

[USN]

WHITING FLD NAS - SOUTH (KNDZ)

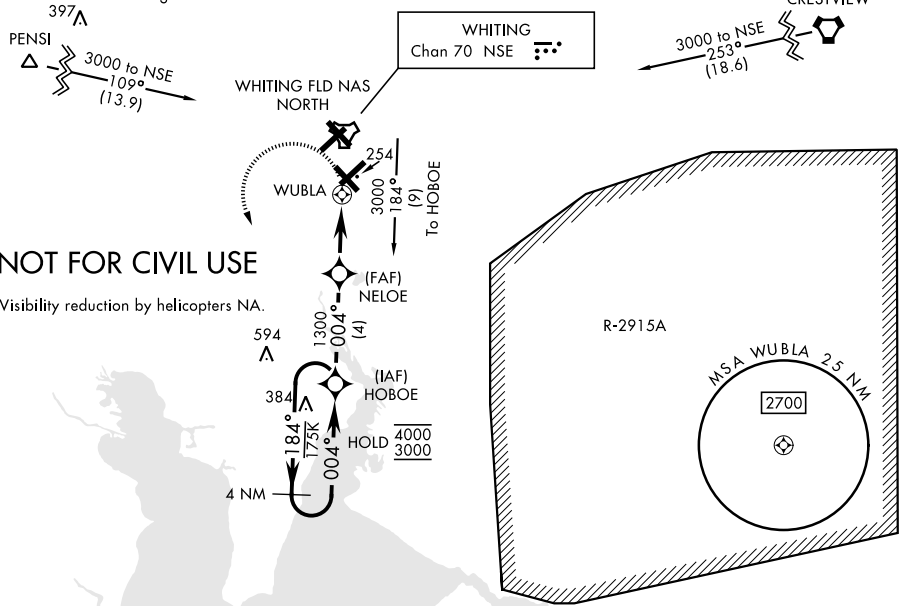
RNP APCH

MISSED APPROACH: Climb to 700, then climbing left turn to 3000 direct HOBEO and hold. Continue climb-in-hold to 3000. Contact Pensacola Approach Control.

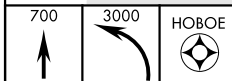
▼ Max procedure airspeed 90 KIAS.
Arm approach made 30 NM from airport.

ATIS ★ 273.575	PENSACOLA APP CON 124.85 235.775	SOUTH WHITING TOWER ★ 123.075 348.675	GND CON 317.65	CLNC DEL 355.6	ASR/PAR
--------------------------	--	---	--------------------------	--------------------------	---------

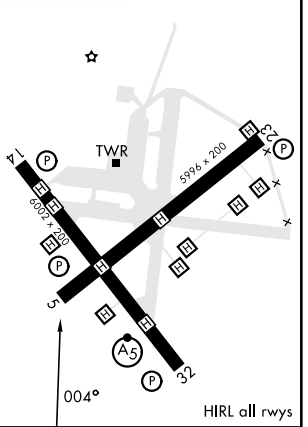
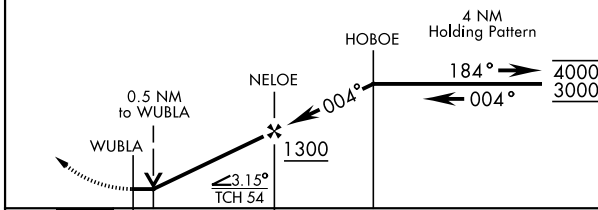
CAUTION: 1. Intensive VFR student training all quadrants.
2. Whiting FLD NAS - NORTH located 1 NM N.



EMERG SAFE ALT 100 NM 3500



ELEV 177



CATEGORY	COPTER	
LNVA MDA	520-1	350 (400-1)
CIRCLING	NOT AUTHORIZED	

COPTER RNAV (GPS) 004°

SE-3, 26 DEC 2024 to 23 JAN 2025

SE-3, 26 DEC 2024 to 23 JAN 2025