

# COPTER TACAN 004°

TACAN NSE Chan <b>70</b>	APCH CRS <b>004°</b>	Rwy Idg TDZE Arprt Elev <b>5996</b> <b>N/A</b> <b>177</b>
-----------------------------	-------------------------	--

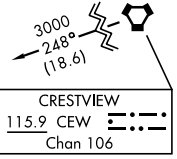
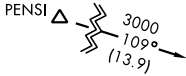
[USN]

WHITING FLD NAS - SOUTH (KNDZ)

▼ Maximum airspeed 90 KIAS.  
Visibility reduction by helicopters NA.

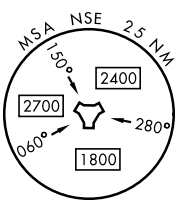
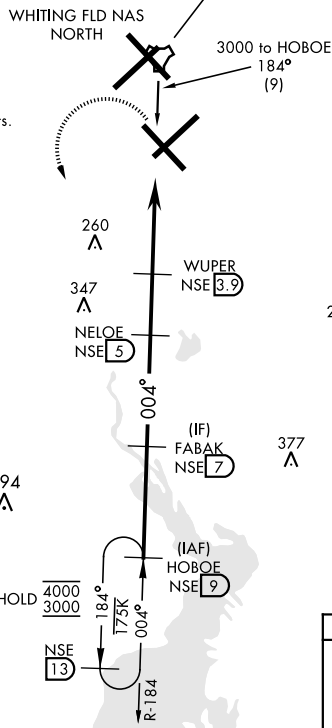
MISSED APPROACH: Climb to 700. Then climbing left turn to 3000. Intercept NSE TACAN R-184 to HOBEOE and hold. Contact Pensacola Approach Control.

ATIS ★ <b>273.575</b>	PENSACOLA APP CON <b>124.85 235.775</b>	SOUTH WHITING TOWER ★ <b>123.075 348.675</b>	GND CON <b>317.65</b>	CLNC DEL <b>355.6</b>	ASR/ PAR
--------------------------	--	---	--------------------------	--------------------------	-------------



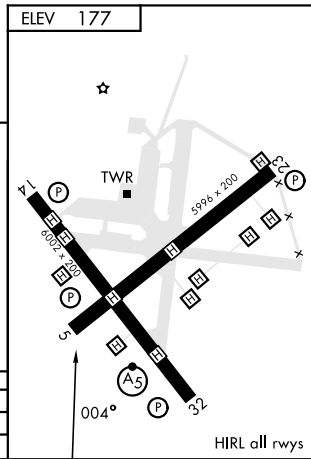
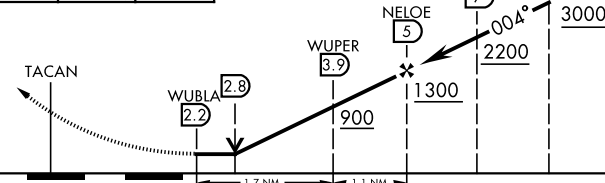
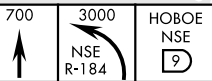
**CAUTION:**

- Intensive VFR training all quadrants.
- Whiting Fld NAS - NORTH located 1 NM N.



EMERG SAFE ALT 100 NM 3500

ELEV 177



CATEGORY	COPTER	
H-004	560-1	390 (400-1)
CIRCLING	NOT AUTHORIZED	

# COPTER TACAN 004°

SE-3, 26 DEC 2024 to 23 JAN 2025

SE-3, 26 DEC 2024 to 23 JAN 2025