

MILTON, FLORIDA

# ILS Y or LOC Y RWY 32

LOC/DME I-NDZ <b>110.55</b> Chan <b>42(Y)</b>	APCH CRS <b>319°</b>	Rwy Ldg TDZE Arprt Elev <b>6002</b> <b>172</b> <b>177</b>
---	-------------------------	--

AL-1909 [UNJ]

WHITING FLD NAS - SOUTH (KNDZ)

TACAN, DME required.

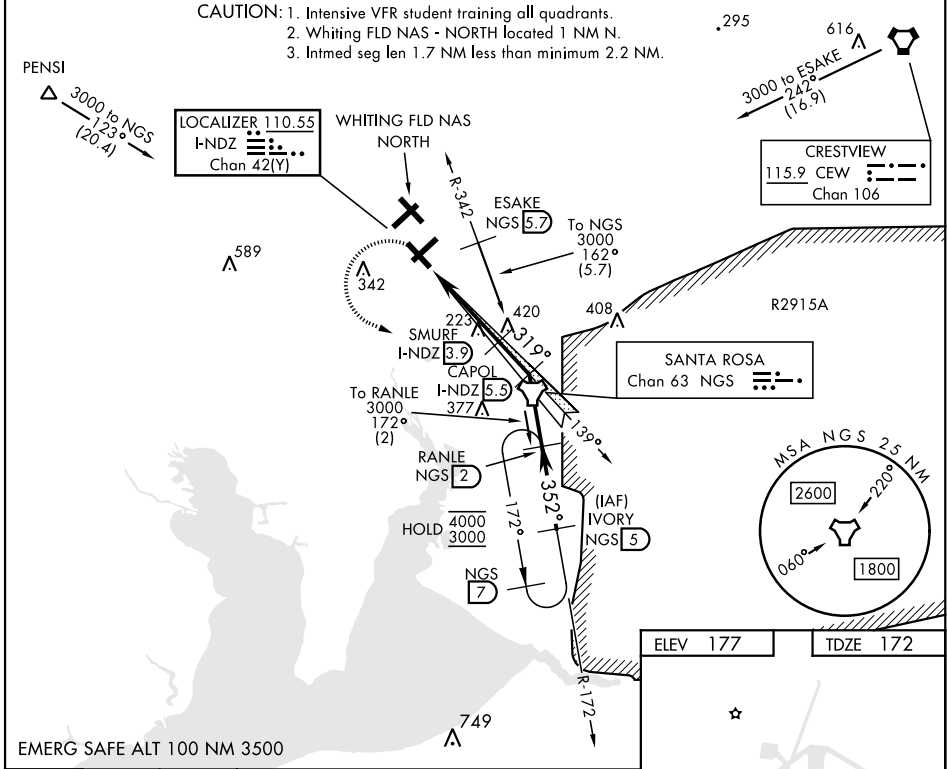
▼ \* When ALS inop, increase vis to ¾ mile.  
\*\* When ALS inop, increase vis to 1 mile.  
\*\*\* Circling not authorized N of Rwy 14 and 23.

MALSRL  
AS

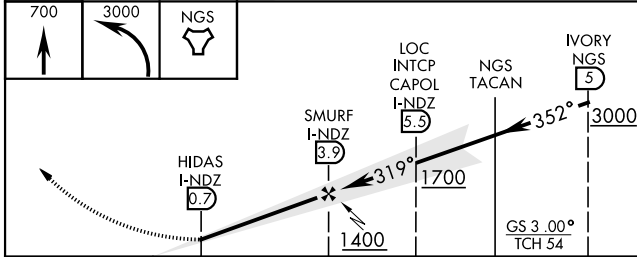
MISSED APPROACH: Climb to 700, then climbing left turn to 3000 direct NGS TACAN. Then via R-172 to RANLE and hold continue climb in hold. Contact Pensacola Approach Control.

ATIS <b>273.575</b>	PENSACOLA APP CON <b>124.85 235.775</b>	SOUTH WHITING TOWER <b>123.075 348.675</b>	GND CON <b>317.65</b>	CLNC DEL <b>355.6</b>	ASR/ PAR
------------------------	--	---	--------------------------	--------------------------	-------------

- CAUTION: 1. Intensive VFR student training all quadrants.  
2. Whiting FLD NAS - NORTH located 1 NM N.  
3. Intmed seg len 1.7 NM less than minimum 2.2 NM.

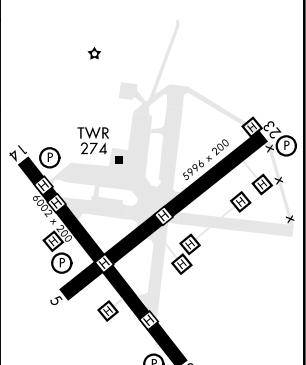


EMERG SAFE ALT 100 NM 3500



CATEGORY	A	B	C	D
S-ILS 32*		372-½	200 (200-½)	
S-LOC 32**		480-½	308 (400-½)	
CIRCLING***	580-1 403 (500-1)	640-1 463 (500-1)	660-1½ 483 (500-1½)	740-2 563 (600-2)

ELEV 177	TDZE 172
----------	----------



HIRL all rwy's

FAF to MAP 3.2 NM					
Knots	60	90	120	150	180
Min:Sec	3:12	2:08	1:36	1:17	1:04

MILTON, FLORIDA

30°42'N-87°01'W

WHITING FLD NAS - SOUTH (KNDZ)

Orig 10AUG23

# ILS Y or LOC Y RWY 32

SE-3, 26 DEC 2024 to 23 JAN 2025

SE-3, 26 DEC 2024 to 23 JAN 2025