

WAAS CH <b>50539</b> <b>W22A</b>	APP CRS <b>221°</b>	Rwy Idg TDZE <b>447</b> Apt Elev <b>447</b>	<b>5000</b>
--	------------------------	---	-------------

# RNAV (GPS) RWY 22

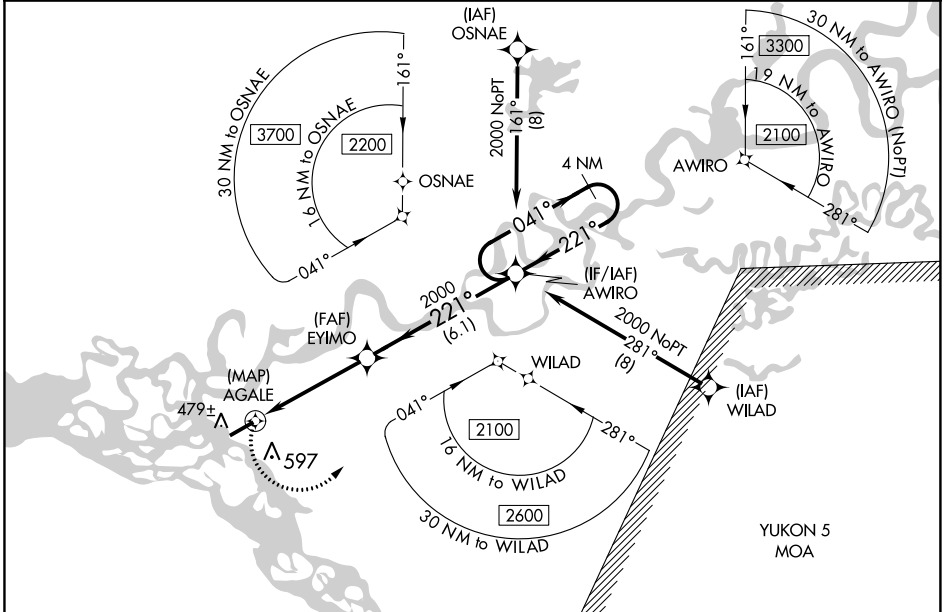
FORT YUKON (FYU) (PFYU)

**▼** Inop table does not apply to LPV or LNAV/VNAV all Cats. For uncompensated Baro-VNAV systems, LNAV/VNAV NA below -20°C (-4°F) or above 54°C (130°F). Circling NA southeast of Rwy 4 and 22. DME/DME RNP-0.3 NA. Rwy 22 helicopter visibility reduction below 3/4 SM NA. For inop ALS, increase LNAV Cat C and D visibility 1/8 SM

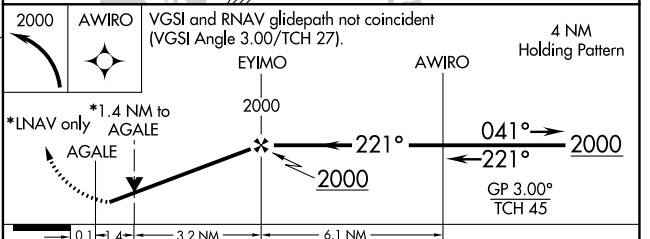
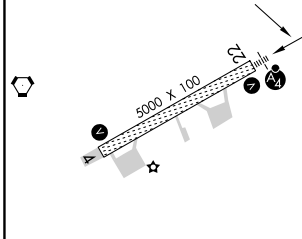
MALSF

MISSED APPROACH: Climbing left turn to 2000 direct AWIRO and hold.

AWOS-3P <b>125.8</b>	ANCHORAGE CENTER <b>135.0 225.4</b>	FAIRBANKS RADIO <b>122.05</b>	CTAF <b>122.5</b>
-------------------------	--	----------------------------------	----------------------



ELEV <b>447</b>	TDZE <b>447</b>
-----------------	-----------------



CATEGORY	A	B	C	D
LPV DA		697-1	250 (300-1)	
LNAV/VNAV DA		716-1	269 (300-1)	
LNAV MDA	960-1	513 (600-1)	960-1 1/4	513 (600 1/4)
CIRCLING	960-1	513 (600-1)	960-1 1/2 513 (600-1 1/2)	1000-2 553 (600-2)

AK, 26 DEC 2024 to 20 FEB 2025

AK, 26 DEC 2024 to 20 FEB 2025