

VOR/DME MDO	APP CRS	Rwy Idg	3158
115.3	022°	TDZE	100
Chan 100		Apt Elev	100

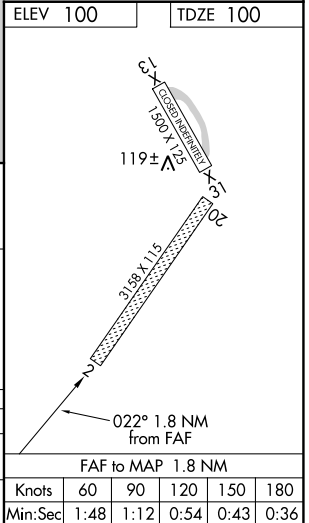
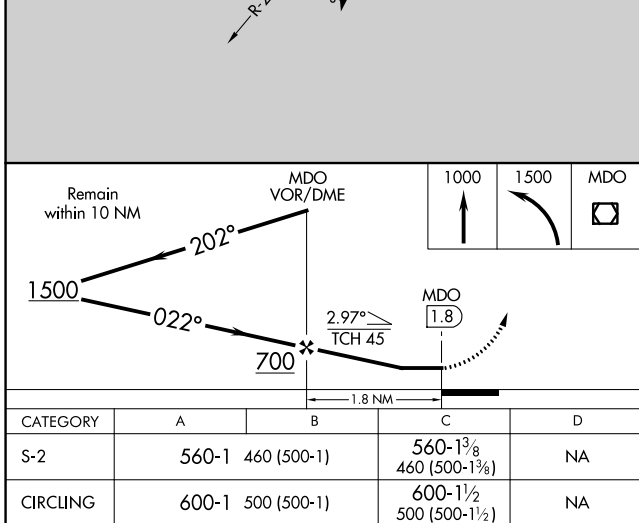
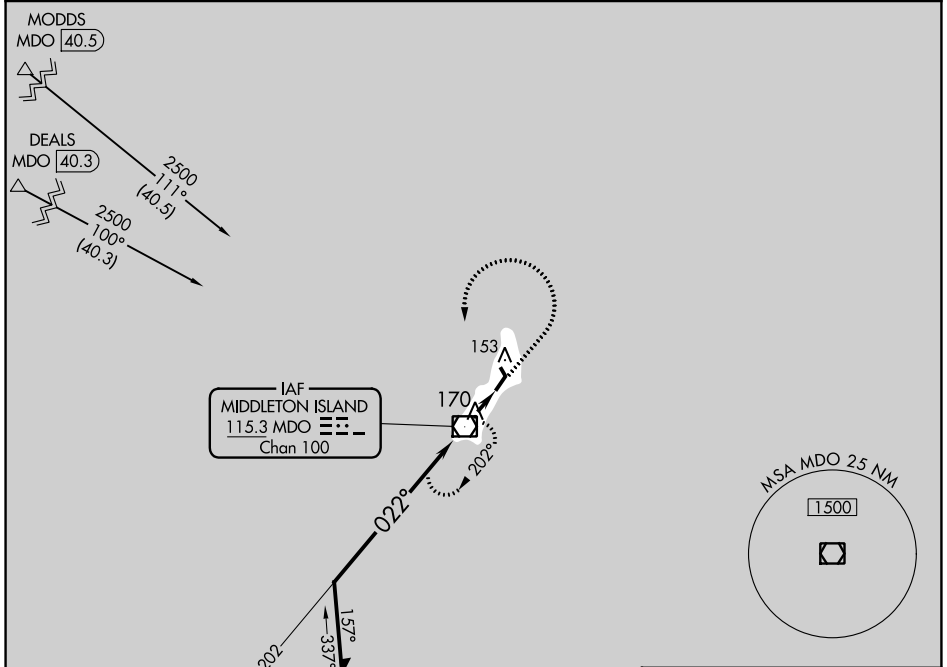
VOR RWY 2

MIDDLETON ISLAND (MDO) (PAMD)

▼ When local altimeter setting not received, procedure NA.
 Procedure NA at night.
 Helicopter visibility reduction below 1 SM NA.

MISSED APPROACH: Climb to 1000 then climbing left turn to 1500 direct MDO VOR/DME and hold.

AWOS-3P 135.725	ANCHORAGE CENTER 133.6 269.4	JUNEAU RADIO 122.05	CTAF 122.9
---------------------------	--	-------------------------------	----------------------



AK, 26 DEC 2024 to 20 FEB 2025

AK, 26 DEC 2024 to 20 FEB 2025